

Carnegie Primary School (2897)

2006 School Level Report

Please check the data in this report. If, after comparing it with your own records, you deem it to be incorrect or incomplete, follow the directions on the web page below:

- <http://www.sofweb.vic.edu.au/standards>, then click on '**Accountability and Improvement**', then click on '**School Performance Reports**'.
-
-

Contents

	Page No.
Confidentiality	3
'Like' School Group chart	4
Assessment of Reading Prep to Year 2	5-6
Teacher Assessments against the VELs/CSF	7-15
AIM Reading	16
AIM Number	17
Teacher Assessment of Student Progress (PSD students)	18-19
Enrolments	20
Student Absence	21
Parent Opinion	22-23
Staff Opinion	24
Staff Sick Leave	25
Teaching Staff Retention	26
Bank Balances	27

Confidentiality

When reporting on the school's performance to the school community, care must be taken to avoid the disclosure of information that can directly or indirectly identify an individual. This may be a particular issue when reporting on the achievement of specific cohorts of students or the opinions of staff where there are small numbers.

In situations where confidentiality cannot be assured, schools may wish to report on the mean result or provide a written comment on school, year level or cohort performance.

Where the School Level Report is provided to school council members as part of any annual reporting process, or used for discussion on a school's performance, such as in consultation with the school community in the school self-evaluation process, it is important to remind school community members of their duty to only use this information for the purpose it was provided, and that the material must be kept confidential.

It is important to note that information that identifies an individual or can be used with other readily available information to identify a person is now protected by the *Information Privacy Act 2000* (<http://www.education.vic.gov.au/about/deptpolicies/informationprivacy.htm>).

'Like' School Group

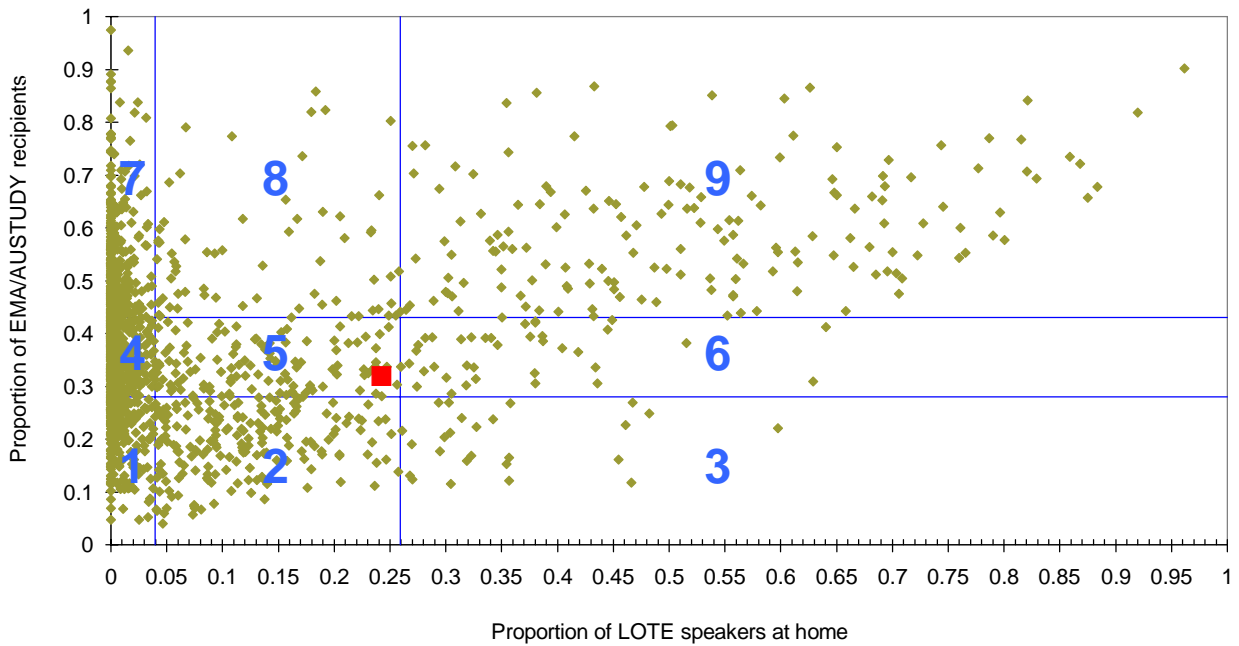
School no: 2897
School name: Carnegie Primary School
Explanation: The first chart below plots the Like School Group position of all government schools offering Prep - Year 10. The second chart plots the Like School Group position of all government schools providing VCE.

This school is shown as the red square on the relevant chart/s.

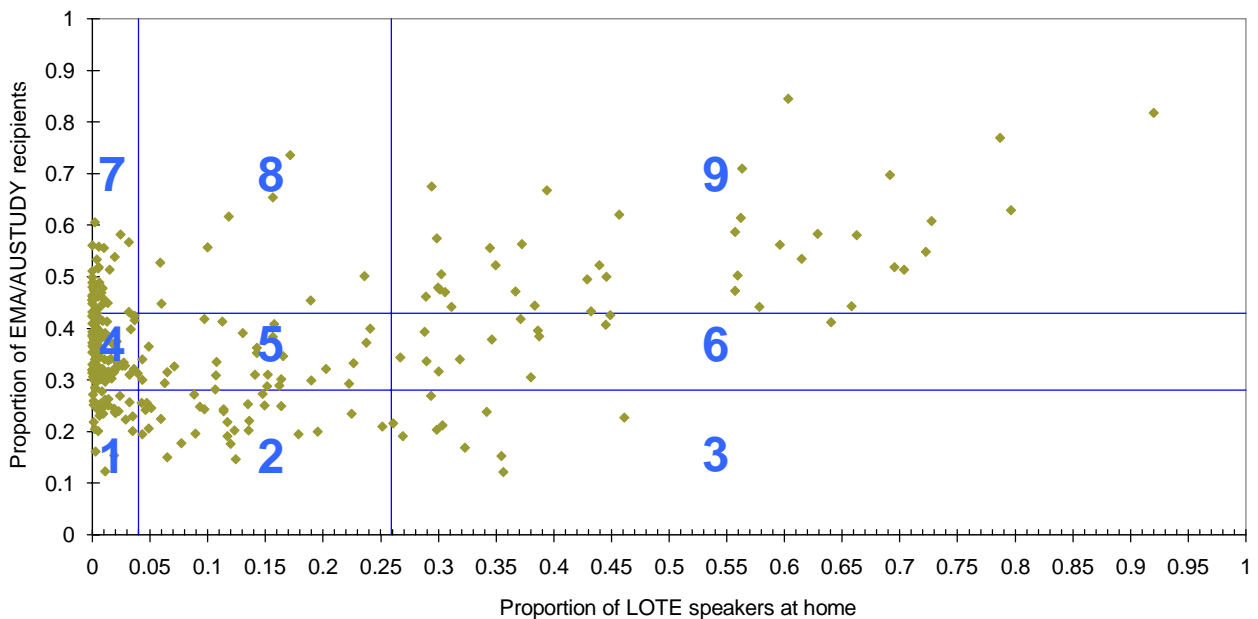
Note: EMA/AUSTUDY and LOTE proportions were not collected from 2004. 2003 proportions, and resulting LSGs, are therefore used from 2004.

	1999	2000	2001	2002	2003	2004	2005	2006
LSG:	6	6	6	5	5	5	5	5
EMA (3 year average):		0.301	0.289	0.297	0.319	0.319	0.319	0.319
LOTE (3 year average):		0.288	0.271	0.247	0.242	0.242	0.242	0.242

Like School Groups 2006, school plotted against Prep - Year 10 schools



Like School Groups 2006, school plotted against VCE providers



Assessment of Reading: Prep to Year 2

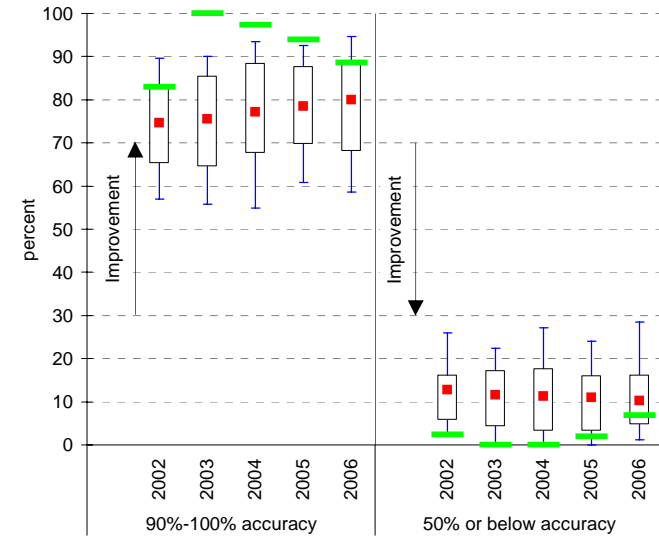
School no: 2897

School name: Carnegie Primary School

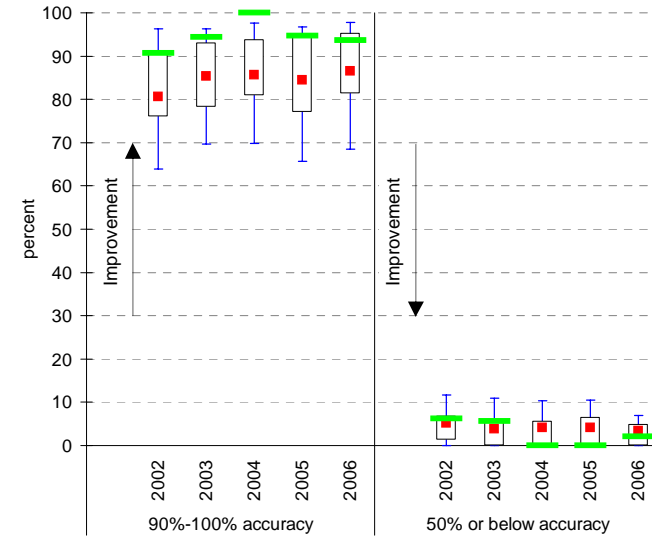
Explanation: Students' ability to read unsighted text is assessed at the end of each year.

Source of data: Data transmitted from school to DoE via an online web-form.

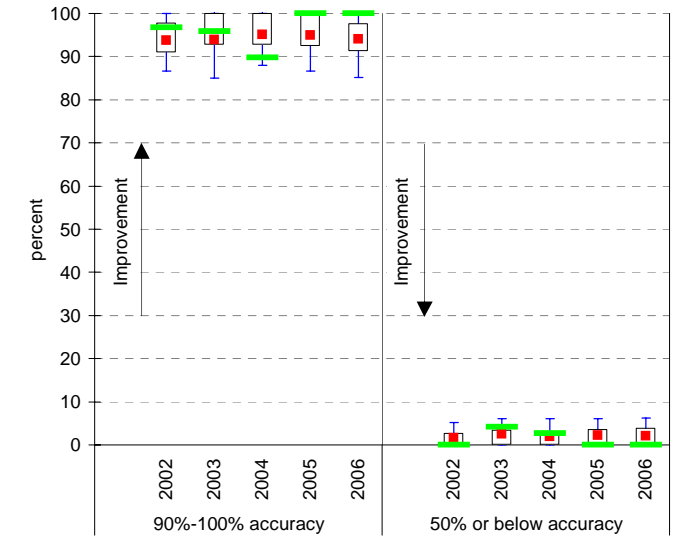
Year level: Prep
Text level: Level 5



Year level: Year 1
Text level: Level 15



Year level: Year 2
Text level: Level 20



Legend:

- LSG 90th percentile
- LSG 75th percentile
- LSG Mean
- LSG 25th percentile
- School
- LSG 10th percentile

LSG History

2002	5
2003	5
2004	5
2005	5
2006	5

Teacher Assessments against the VELS - Year levels Prep-6 combined

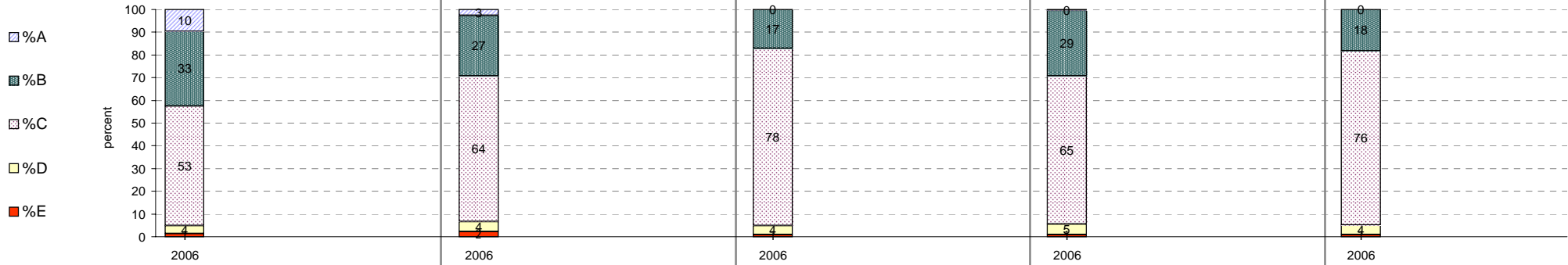
School no: 2897

School name: Carnegie Primary School

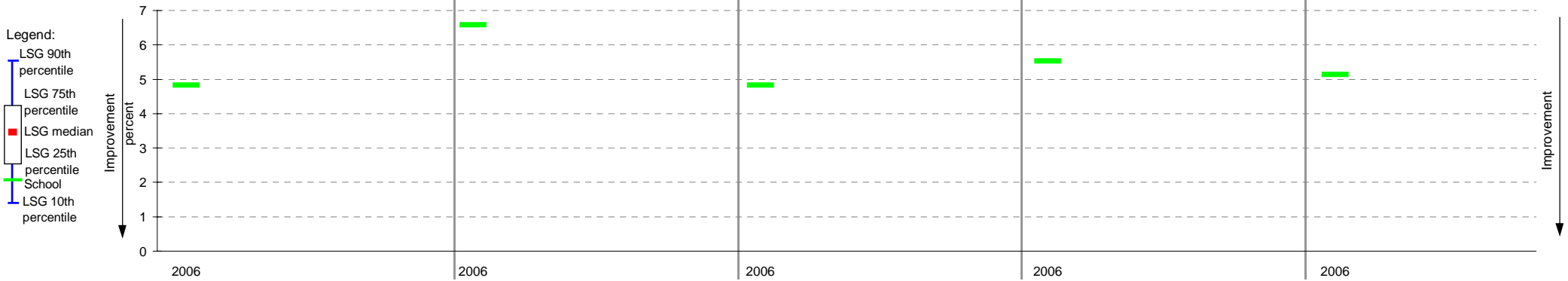
Source of data: Data retrieved electronically from CASES21 at time of rollover.

Explanation: Teacher assessments of student progress against the VELS.

	Reading						Writing						Speaking & Listening						Number						Measurement, Chance & Data*						
	total students	% A	% B	% C	% D	% E	total students	% A	% B	% C	% D	% E	total students	% A	% B	% C	% D	% E	total students	% A	% B	% C	% D	% E	total students	% A	% B	% C	% D	% E	
Year Levels: Prep-6 (combined)	2006	228	10	33	53	4	1	228	3	27	64	4	2	228	0	17	78	4	1	235	0	29	65	5	1	234	0	18	76	4	1



Percentage achieving D or E, compared to LSG benchmarks**



Notes:

* pre-2006, the corresponding CSF strand for VELS Measurement, Chance and Data was Measurement.

** 2006 benchmarks will not be available until June 2007.

Teacher Assessments against the VELS - English (primary)

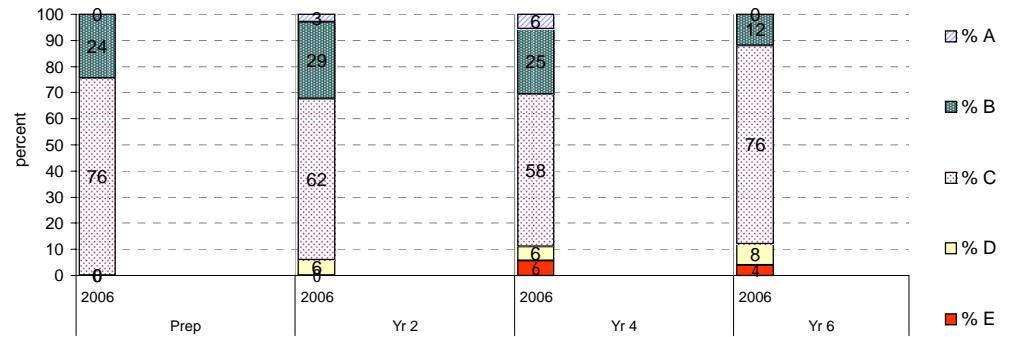
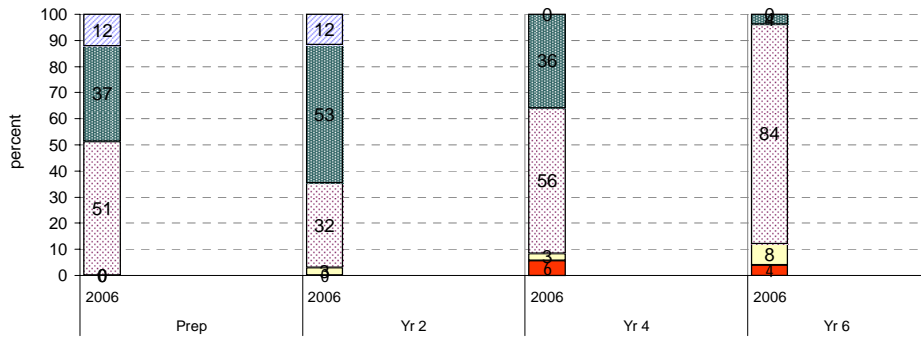
School no: 2897
School name: Carnegie Primary School
Source of data: Data retrieved electronically from CASES21 at time of rollover.
Explanation: Teacher assessments of student progress against the VELS.

Reading

		total students	% A	% B	% C	% D	% E	mean	Benchmarks* (means)	
									LSG	State
Prep	2006	41	12	37	51	0	0	1.16		
Yr 2	2006	34	12	53	32	3	0	2.28		
Yr 4	2006	36	0	36	56	3	6	2.99		
Yr 6	2006	25	0	4	84	8	4	3.87		

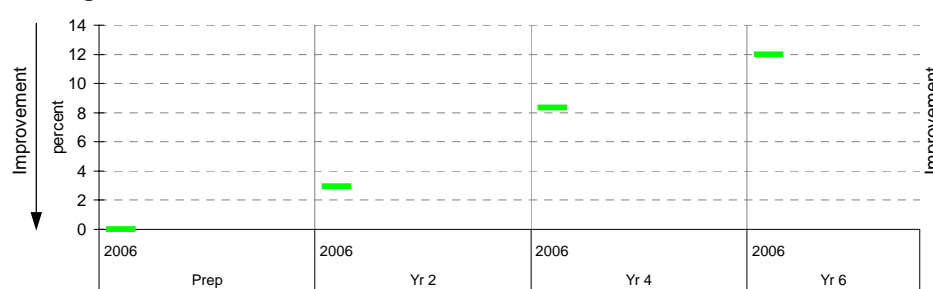
Writing

		total students	% A	% B	% C	% D	% E	mean	Benchmarks* (means)	
									LSG	State
Prep	2006	41	0	24	76	0	0	0.94		
Yr 2	2006	34	3	29	62	6	0	2.06		
Yr 4	2006	36	6	25	58	6	6	3.00		
Yr 6	2006	25	0	12	76	8	4	3.88		

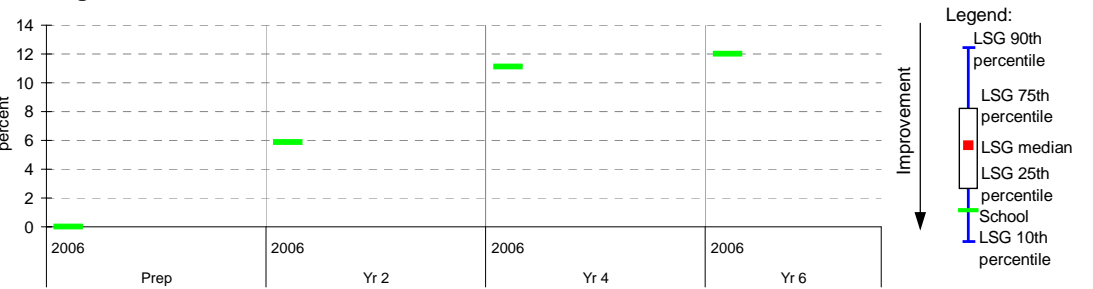


Percentage achieving D or E, compared to LSG benchmarks*

Reading



Writing



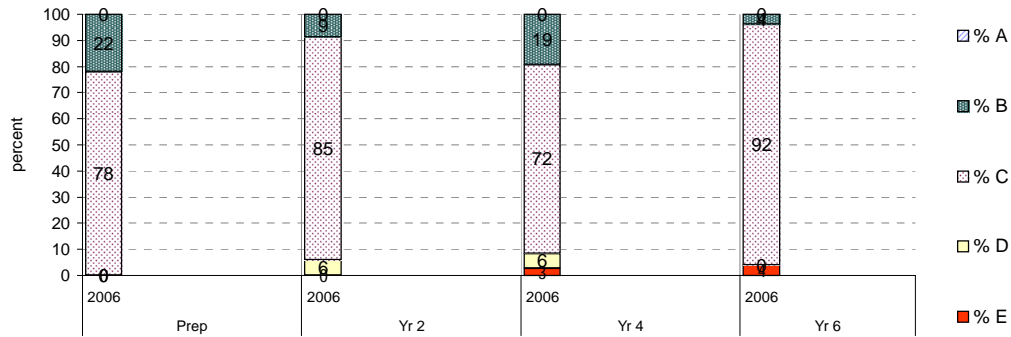
* Note: 2006 benchmarks will not be available until June 2007.

Teacher Assessments against the VELS - English (primary)

School no: 2897
School name: Carnegie Primary School
Source of data: Data retrieved electronically from CASES21 at time of rollover.
Explanation: Teacher assessments of student progress against the VELS.

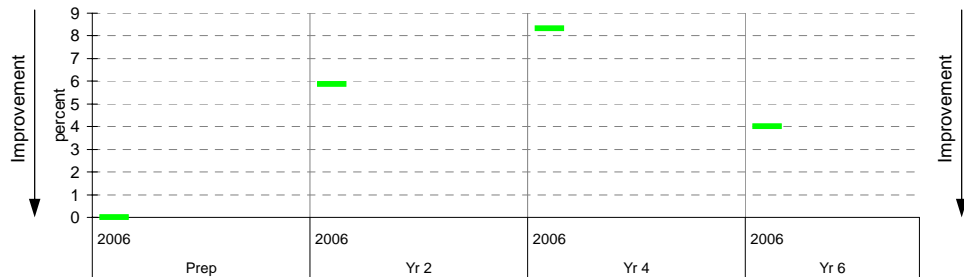
Speaking and Listening

		total students	% A	% B	% C	% D	% E	mean	Benchmarks* (means)	
									LSG	State
Prep	2006	41	0	22	78	0	0	1.00		
Yr 2	2006	34	0	9	85	6	0	1.97		
Yr 4	2006	36	0	19	72	6	3	2.96		
Yr 6	2006	25	0	4	92	0	4	3.91		



Percentage achieving D or E, compared to LSG benchmarks*

Speaking and Listening



- Legend:
- LSG 90th percentile
 - LSG 75th percentile
 - LSG median
 - LSG 25th percentile
 - School
 - LSG 10th percentile

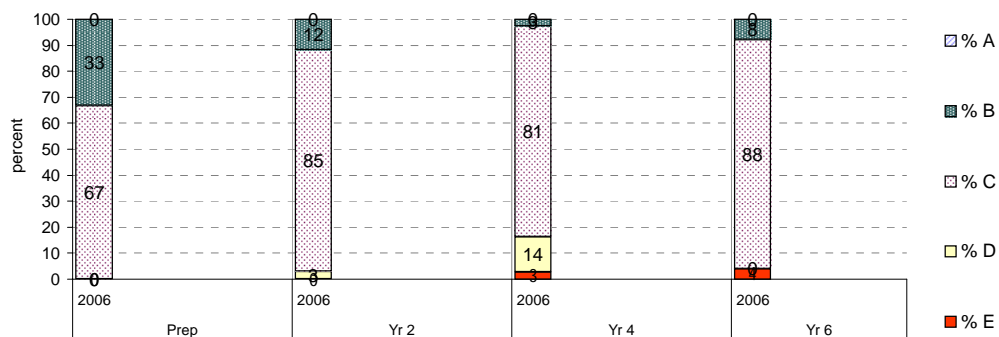
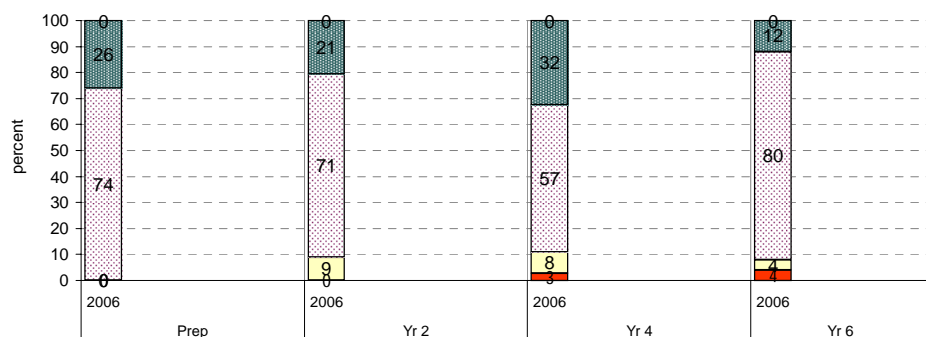
* Note: 2006 benchmarks will not be available until June 2007.

Teacher Assessments against the VELS - Mathematics (primary)

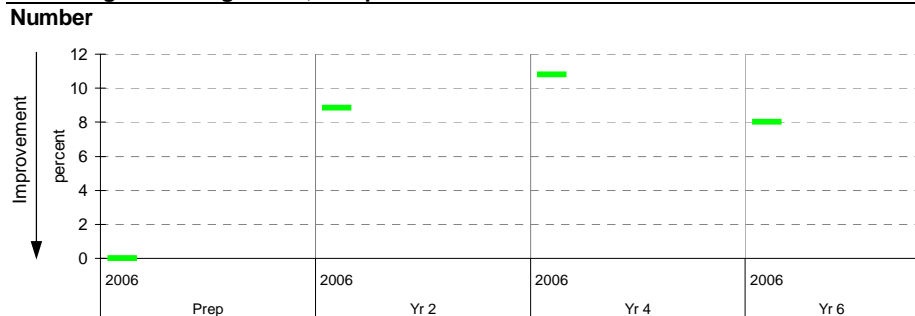
School no: 2897
School name: Carnegie Primary School
Source of data: Data retrieved electronically from CASES21 at time of rollover.
Explanation: Teacher assessments of student progress against the VELS.

Number		total students	% A	% B	% C	% D	% E	mean	Benchmarks* (means)	
									LSG	State
Prep	2006	42	0	26	74	0	0	1.04		
Yr 2	2006	34	0	21	71	9	0	1.99		
Yr 4	2006	37	0	32	57	8	3	2.99		
Yr 6	2006	25	0	12	80	4	4	3.91		

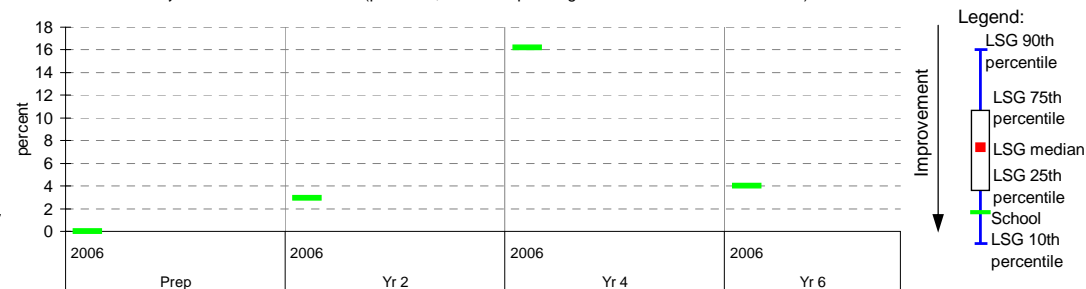
Measurement, Chance and Data (pre-2006, the corresponding CSF strand was Measurement)										
Number		total students	% A	% B	% C	% D	% E	mean	Benchmarks* (means)	
									LSG	State
Prep	2006	42	0	33	67	0	0	1.04		
Yr 2	2006	34	0	12	85	3	0	1.99		
Yr 4	2006	37	0	3	81	14	3	2.85		
Yr 6	2006	25	0	8	88	0	4	3.97		



Percentage achieving D or E, compared to LSG benchmarks*



Measurement, Chance and Data (pre-2006, the corresponding CSF strand was Measurement)



* Note: 2006 benchmarks will not be available until June 2007.

Teacher Assessments against the VELS - English (primary)

School no: 2897		LSG History
School name: Carnegie Primary School		2003 5
Source of data: Data retrieved electronically from CASES21 at time of rollover.		2004 5
Explanation: Teacher assessments of student progress against the VELS.		2005 5
		2006 5

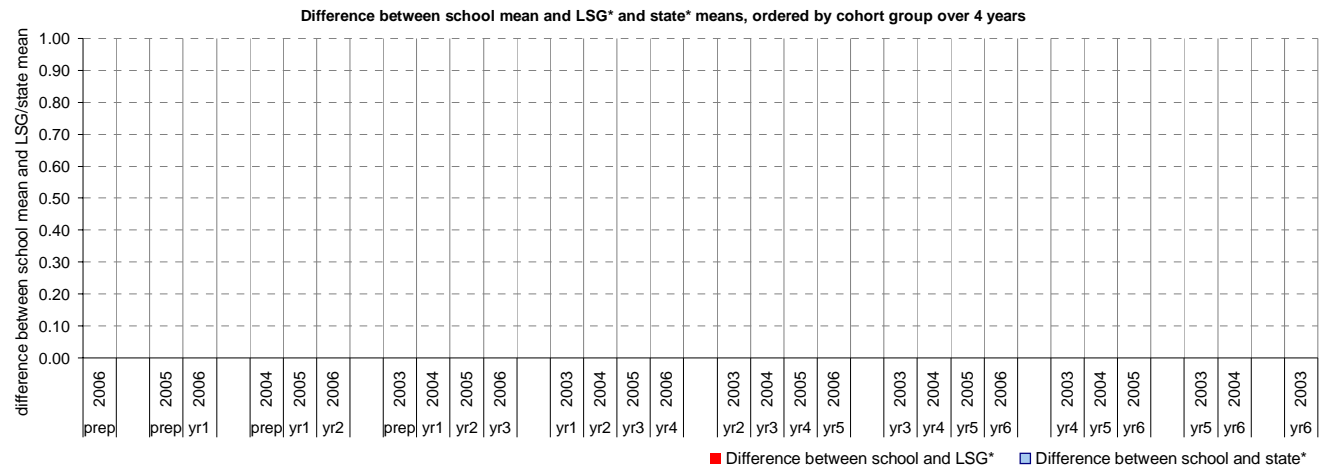
Reading

Year Level	Year	Total (1)	Assessed (2)	Level 1			Level 2			Level 3			Level 4			Level 5			Level 6			Level 6E			School mean	Benchmark* means		Diff. between school and ...	
				0.00	0.50	1.00	1.25	1.50	1.75	2.00	2.25	2.50	2.75	3.00	3.25	3.50	3.75	4.00	4.25	4.50	4.75	5.00	5.25	5.50		5.75	6.00	6.25	6.50
prep	2006	41	41	4	17	11	4	4	1															1.16					
prep	2005																												
yr1	2006	45	45	1	18	8	5	7	5	1														1.84					
prep	2004																												
yr1	2005																												
yr2	2006	34	34		1	2	9	9	9	1	3													2.28					
prep	2003																												
yr1	2004																												
yr2	2005																												
yr3	2006	25	24			1		2	10	9	2													2.58					
yr1	2003																												
yr2	2004																												
yr3	2005																												
yr4	2006	37	36		1	1		1	5	15	9	4												2.99					
yr2	2003																												
yr3	2004																												
yr4	2005																												
yr5	2006	26	23							1	1	1	16	4										3.48					
yr3	2003																												
yr4	2004																												
yr5	2005																												
yr6	2006	25	25							1		2	6	15	1									3.87					
yr4	2003																												
yr5	2004																												
yr6	2005																												
yr5	2003																												
yr6	2004																												
yr6	2003																												

shading indicates a 'C' grade (at the expected standard) on the VELS scale.

- (1) Students in group
- (2) Total assessed

* Note: 2006 benchmarks will not be available until June 2007.



Teacher Assessments against the VELS - English (primary)

School no: 2897	LSG History
School name: Carnegie Primary School	2003 5
Source of data: Data retrieved electronically from CASES21 at time of rollover.	2004 5
Explanation: Teacher assessments of student progress against the VELS.	2005 5
	2006 5

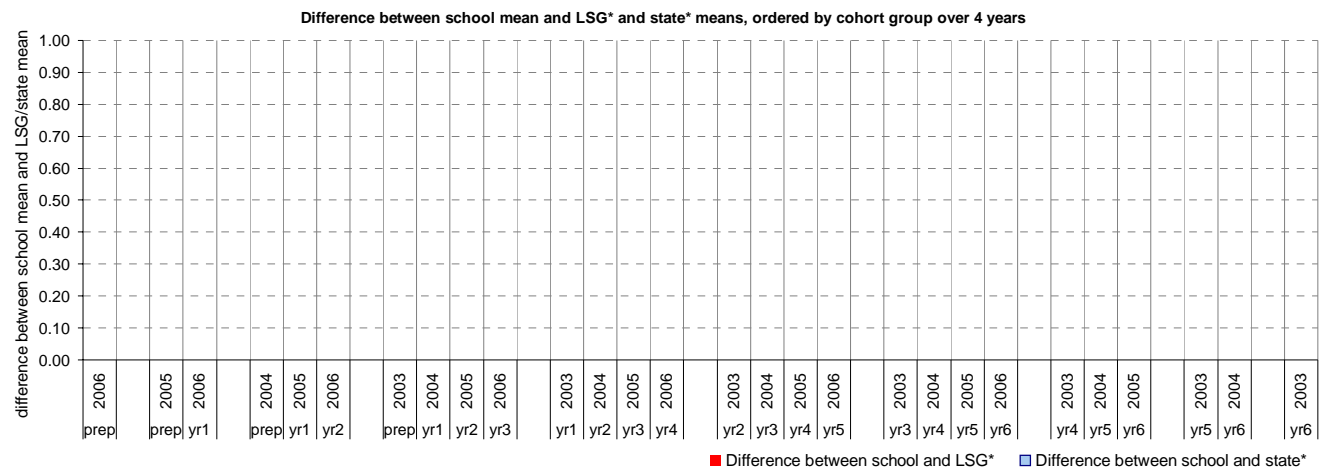
Writing

Year Level	Year	Total (1)	Assessed (2)	Level 1			Level 2			Level 3			Level 4			Level 5			Level 6			Level 6E			School mean	Benchmark* means		Diff. between school and ...	
				0.00	0.50	1.00	1.25	1.50	1.75	2.00	2.25	2.50	2.75	3.00	3.25	3.50	3.75	4.00	4.25	4.50	4.75	5.00	5.25	5.50		5.75	6.00	6.25	6.50
prep	2006	41	41	10	21																			0.94					
prep	2005																												
yr1	2006	45	45			7	19	15	2	1	1														1.61				
prep	2004																												
yr1	2005																												
yr2	2006	34	34				2	6	15	5	5	1														2.06			
prep	2003																												
yr1	2004																												
yr2	2005																												
yr3	2006	25	24				1		1	4	10	6	1	1												2.51			
yr1	2003																												
yr2	2004																												
yr3	2005																												
yr4	2006	37	36				1	1		2	3	18	6	3	2											3.00			
yr2	2003																												
yr3	2004																												
yr4	2005																												
yr5	2006	26	23							1		3	3	11	5											3.41			
yr3	2003																												
yr4	2004																												
yr5	2005																												
yr6	2006	25	25								1	2	5	14	3											3.88			
yr4	2003																												
yr5	2004																												
yr6	2005																												
yr5	2003																												
yr6	2004																												
yr6	2003																												

shading indicates a 'C' grade (at the expected standard) on the VELS scale.

- (1) Students in group
- (2) Total assessed

* Note: 2006 benchmarks will not be available until June 2007.



Teacher Assessments against the VELS - English (primary)

School no: 2897		LSG History
School name: Carnegie Primary School		2003 5
Source of data: Data retrieved electronically from CASES21 at time of rollover.		2004 5
Explanation: Teacher assessments of student progress against the VELS.		2005 5
		2006 5

Speaking and Listening

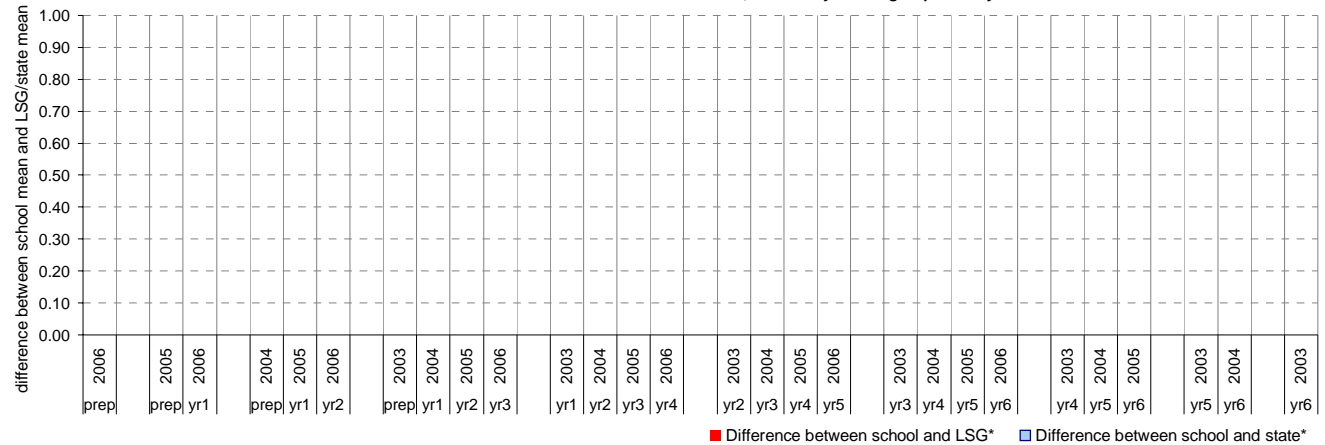
Year Level	Year	Total (1)	Assessed (2)	Level 1			Level 2			Level 3			Level 4			Level 5			Level 6			Level 6E			School mean	Benchmark* means		Diff. between school and ...	
				0.00	0.50	1.00	1.25	1.50	1.75	2.00	2.25	2.50	2.75	3.00	3.25	3.50	3.75	4.00	4.25	4.50	4.75	5.00	5.25	5.50		5.75	6.00	6.25	6.50
prep	2006	41	41	5	27	8	1																	1.00					
prep	2005																												
yr1	2006	45	45	1	3	34	4	3																1.53					
prep	2004																												
yr1	2005																												
yr2	2006	34	34		1	1	2	27	3															1.97					
prep	2003																												
yr1	2004																												
yr2	2005																												
yr3	2006	25	24				1	4	14	4	1													2.50					
yr1	2003																												
yr2	2004																												
yr3	2005																												
yr4	2006	37	36				1	2	6	20	6	1												2.96					
yr2	2003																												
yr3	2004																												
yr4	2005																												
yr5	2006	26	23						1	2	2	11	7											3.48					
yr3	2003																												
yr4	2004																												
yr5	2005																												
yr6	2006	25	25							1		6	17	1										3.91					
yr4	2003																												
yr5	2004																												
yr6	2005																												
yr5	2003																												
yr6	2004																												
yr6	2003																												

shading indicates a 'C' grade (at the expected standard) on the VELS scale.

- (1) Students in group
- (2) Total assessed

* Note: 2006 benchmarks will not be available until June 2007.

Difference between school mean and LSG* and state* means, ordered by cohort group over 4 years



Teacher Assessments against the VELS - Mathematics (primary)

School no: 2897		LSG History
School name: Carnegie Primary School		2003 5
Source of data: Data retrieved electronically from CASES21 at time of rollover.		2004 5
Explanation: Teacher assessments of student progress against the VELS.		2005 5
		2006 5

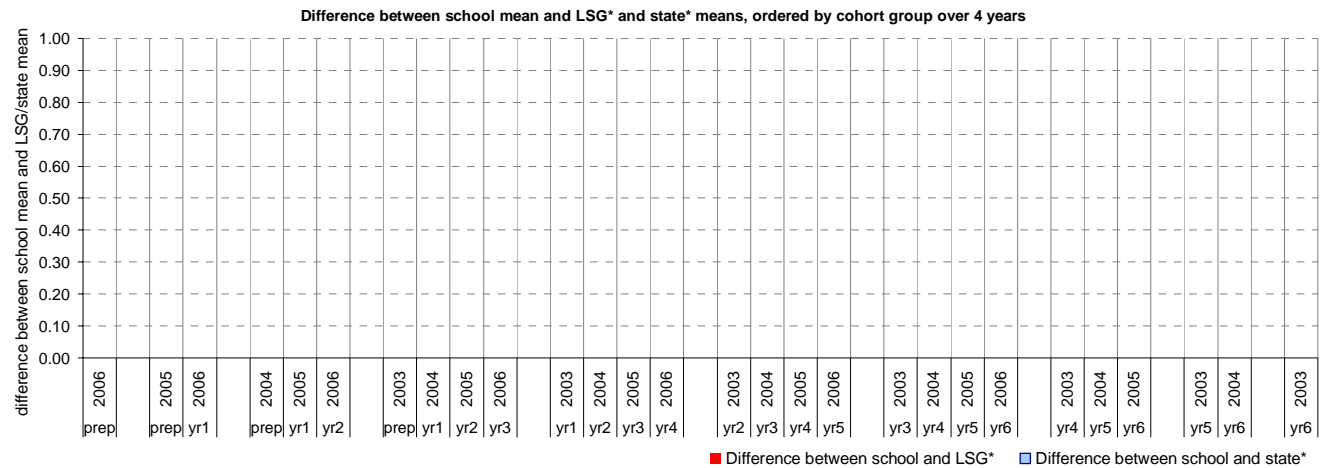
Number

Year Level	Year	Total (1)	Assessed (2)	Level 1			Level 2			Level 3			Level 4			Level 5			Level 6			Level 6E			School mean	Benchmark* means		Diff. between school and ...			
				0.00	0.50	1.00	1.25	1.50	1.75	2.00	2.25	2.50	2.75	3.00	3.25	3.50	3.75	4.00	4.25	4.50	4.75	5.00	5.25	5.50		5.75	6.00	6.25	6.50	6.75	LSG
prep	2006	42	42	2	29	11																		1.04							
prep	2005																														
yr1	2006	46	46		4	24	13	5																	1.60						
prep	2004																														
yr1	2005																														
yr2	2006	34	34			3	3	21	7																	1.99					
prep	2003																														
yr1	2004																														
yr2	2005																														
yr3	2006	26	26				1	9	4	8	4															2.55					
yr1	2003																														
yr2	2004																														
yr3	2005																														
yr4	2006	37	37				1	3	6	15	9	3														2.99					
yr2	2003																														
yr3	2004																														
yr4	2005																														
yr5	2006	26	25						1	2	6	10	5	1												3.45					
yr3	2003																														
yr4	2004																														
yr5	2005																														
yr6	2006	25	25						1		1	5	15	3												3.91					
yr4	2003																														
yr5	2004																														
yr6	2005																														
yr5	2003																														
yr6	2004																														
yr6	2003																														

shading indicates a 'C' grade (at the expected standard) on the VELS scale.

- (1) Students in group
- (2) Total assessed

* Note: 2006 benchmarks will not be available until June 2007.



Teacher Assessments against the VELS - Mathematics (primary)

School no: 2897		LSG History
School name: Carnegie Primary School		2003 5
Source of data: Data retrieved electronically from CASES21 at time of rollover.		2004 5
Explanation: Teacher assessments of student progress against the VELS.		2005 5
		2006 5

Measurement, Chance and Data (pre-2006, the corresponding CSF strand was Measurement)

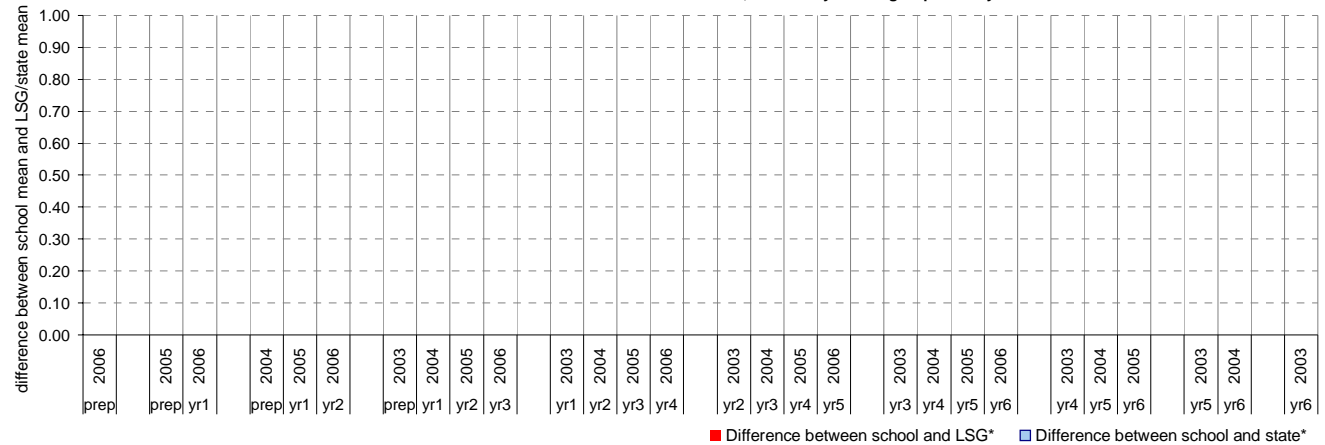
Year Level	Year	Total (1)	Assessed (2)	Level 1			Level 2			Level 3			Level 4			Level 5			Level 6			Level 6E			School mean	Benchmark* means		Diff. between school and ...			
				0.00	0.50	1.00	1.25	1.50	1.75	2.00	2.25	2.50	2.75	3.00	3.25	3.50	3.75	4.00	4.25	4.50	4.75	5.00	5.25	5.50		5.75	6.00	6.25	6.50	6.75	LSG
prep	2006	42	42	4	24	14																		1.04							
prep	2005																														
yr1	2006	46	46			3	34	9																						1.53	
prep	2004																														
yr1	2005																														
yr2	2006	34	34				1	3	26	4																				1.99	
prep	2003																														
yr1	2004																														
yr2	2005																														
yr3	2006	25	25					2	5	10	5	3																		2.52	
yr1	2003																														
yr2	2004																														
yr3	2005																														
yr4	2006	37	37				1	1	4	8	22	1																		2.85	
yr2	2003																														
yr3	2004																														
yr4	2005																														
yr5	2006	26	25							1	1	2	16	5																3.48	
yr3	2003																														
yr4	2004																														
yr5	2005																														
yr6	2006	25	25								1		1	21	2															3.97	
yr4	2003																														
yr5	2004																														
yr6	2005																														
yr5	2003																														
yr6	2004																														
yr6	2003																														

shading indicates a 'C' grade (at the expected standard) on the VELS scale.

- (1) Students in group
- (2) Total assessed

* Note: 2006 benchmarks will not be available until June 2007.

Difference between school mean and LSG* and state* means, ordered by cohort group over 4 years



AIM Year 3 & 5: Reading ¹

School no: 2897

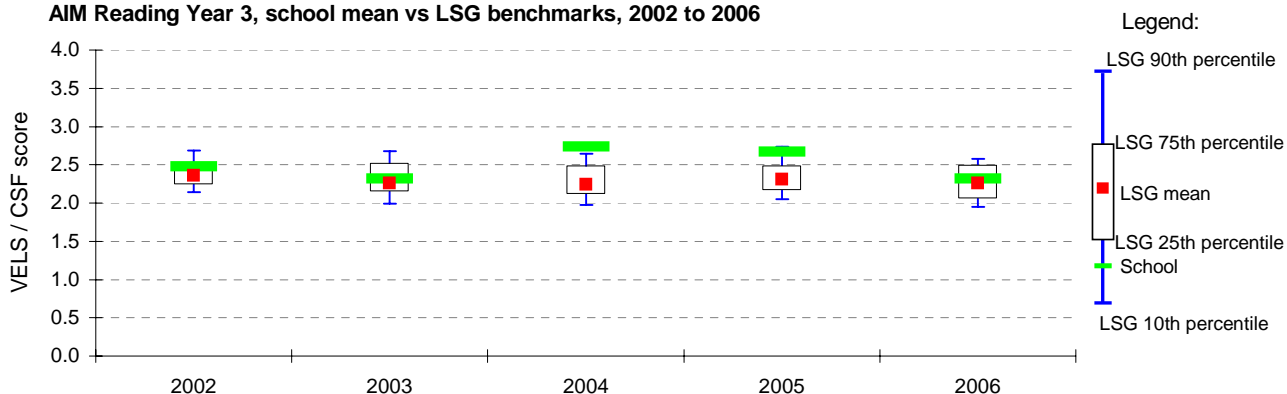
School name: Carnegie Primary School

Explanation: The Achievement Improvement Monitor (AIM) is a statewide assessment program conducted each year for students in Years 3, 5, 7 and 9.

Source of data: Victorian Curriculum and Assessment Authority.

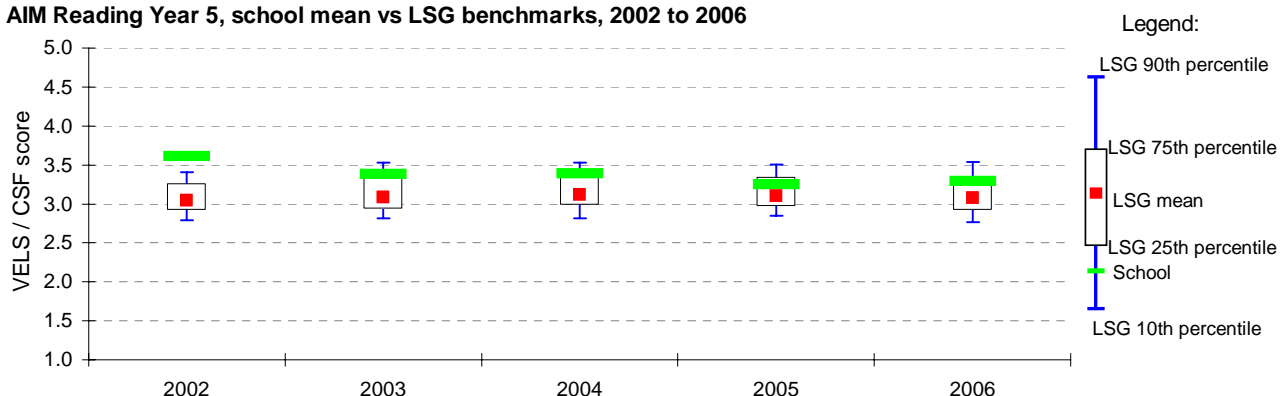
Year	School						LSG					State mean#	
	student participation ² (%)	students participated (n)	VELS / CSF				10th ptile*	25th ptile*	75th ptile*	90th ptile*			
			Level 1 (n) (%)	Level 4/5 (n) (%)		mean							
2002	84	26			7	27	2.5	2.1	2.2	2.4	2.5	2.7	2.4
2003	91	29	2	7	9	31	2.3	2.0	2.1	2.3	2.5	2.7	2.3
2004	76	19			7	37	2.7	2.0	2.1	2.2	2.5	2.6	2.3
2005	88	35			13	37	2.7	2.1	2.2	2.3	2.5	2.7	2.4
2006	92	23	1	4	5	22	2.3	2.0	2.1	2.3	2.5	2.6	2.3

AIM Reading Year 3, school mean vs LSG benchmarks, 2002 to 2006



Year	School						LSG					State mean#	
	student participation ² (%)	students participated (n)	VELS / CSF				10th ptile*	25th ptile*	75th ptile*	90th ptile*			
			Level 2 (n) (%)	Level 5/6 (n) (%)		mean							
2002	74	20			10	50	3.6	2.8	2.9	3.0	3.3	3.4	3.1
2003	77	17			5	29	3.4	2.8	2.9	3.1	3.3	3.5	3.2
2004	88	21	2	10	6	29	3.4	2.8	3.0	3.1	3.4	3.5	3.2
2005	89	24	3	13	7	29	3.2	2.8	3.0	3.1	3.3	3.5	3.2
2006	96	22	2	9	6	27	3.3	2.8	2.9	3.1	3.3	3.5	3.1

AIM Reading Year 5, school mean vs LSG benchmarks, 2002 to 2006



Year 3 / Year 5 matched cohort ³	Yr 5 students participated (n)	Students in matched cohort (n)	Matched cohort (%)	Average growth (VELS / CSF units)	
				Complete school	Matched cohort
Yr3 2002 / Yr5 2004	21	12	57%	0.9	0.8
Yr3 2003 / Yr5 2005	24	16	67%	0.9	1.1
Yr3 2004 / Yr5 2006	22	13	59%	0.6	0.8

Notes: * distribution of school means
mean score of students

¹ for more detailed AIM data, refer to your school's 2006 AIM Data Service website at <http://aimds.vcaa.vic.edu.au>.

² % student participation = (students who participated in AIM / Feb enrolments) * 100

³ students who participated in AIM at the same school in Years 3 and 5 are called the matched cohort

AIM Year 3 & 5: Number ¹

School no: 2897

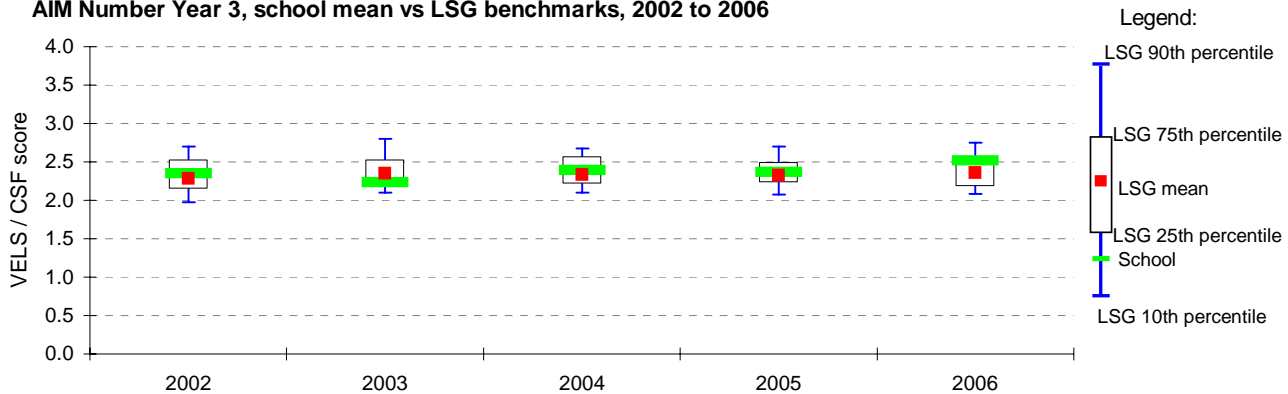
School name: Carnegie Primary School

Explanation: The Achievement Improvement Monitor (AIM) is a statewide assessment program conducted each year for students in Years 3, 5, 7 and 9.

Source of data: Victorian Curriculum and Assessment Authority.

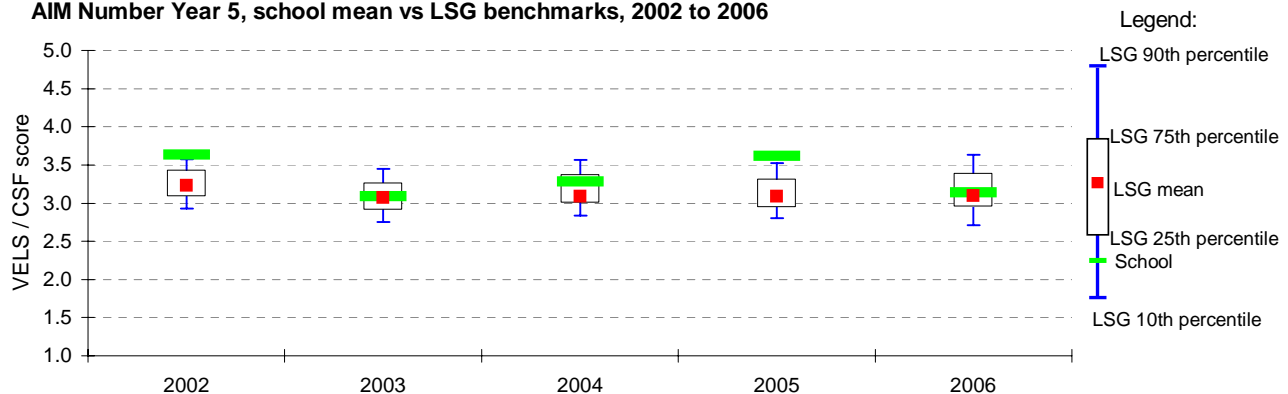
Year	School		VELS / CSF					LSG					State
	student participation ² (%)	students participated (n)	Level 1		Level 4/5		mean	10th ptile*	25th ptile*	75th ptile*	90th ptile*	mean#	
			(n)	(%)	(n)	(%)							
2002	87	27	1	4	7	26	2.4	2.0	2.1	2.3	2.5	2.7	2.4
2003	94	30	1	3	5	17	2.2	2.1	2.2	2.4	2.5	2.8	2.4
2004	80	20	2	10	3	15	2.4	2.1	2.2	2.3	2.6	2.7	2.4
2005	88	35	1	3	10	29	2.4	2.1	2.2	2.3	2.5	2.7	2.4
2006	92	23			8	35	2.5	2.1	2.2	2.4	2.5	2.7	2.4

AIM Number Year 3, school mean vs LSG benchmarks, 2002 to 2006



Year	School		VELS / CSF					LSG					State
	student participation ² (%)	students participated (n)	Level 2		Level 5/6		mean	10th ptile*	25th ptile*	75th ptile*	90th ptile*	mean#	
			(n)	(%)	(n)	(%)							
2002	78	21			10	48	3.6	2.9	3.1	3.2	3.4	3.6	3.3
2003	73	16			2	13	3.1	2.7	2.9	3.1	3.3	3.4	3.1
2004	88	21	1	5	6	29	3.3	2.8	3.0	3.1	3.4	3.6	3.2
2005	93	25			9	36	3.6	2.8	2.9	3.1	3.3	3.5	3.2
2006	100	23	4	17	5	22	3.1	2.7	3.0	3.1	3.4	3.6	3.2

AIM Number Year 5, school mean vs LSG benchmarks, 2002 to 2006



Year 3 / Year 5 matched cohort ³	Yr5 students participated (n)	Students in matched cohort (n)	Matched cohort (%)	Average growth (VELS / CSF units)	
				Complete school	Matched cohort
Yr3 2002 / Yr5 2004	21	14	67%	0.9	1.0
Yr3 2003 / Yr5 2005	25	17	68%	1.4	1.2
Yr3 2004 / Yr5 2006	23	14	61%	0.7	0.9

Notes: * distribution of school means

mean score of students

¹ for more detailed AIM data, refer to your school's 2006 AIM Data Service website at <http://aimds.vcaa.vic.edu.au>.

² % student participation = (students who participated in AIM / Feb enrolments) * 100

³ students who participated in AIM at the same school in Years 3 and 5 are called the matched cohort

Teacher Assessment of Student Progress (PSD students)

School no: 2897

School name: Carnegie Primary School

Explanation: Teachers assess their students' progress against the 8 VELS Domains / CSF KLAs using a 6-point scale (students in special schools and those who cannot be assessed against the VELS / CSF).

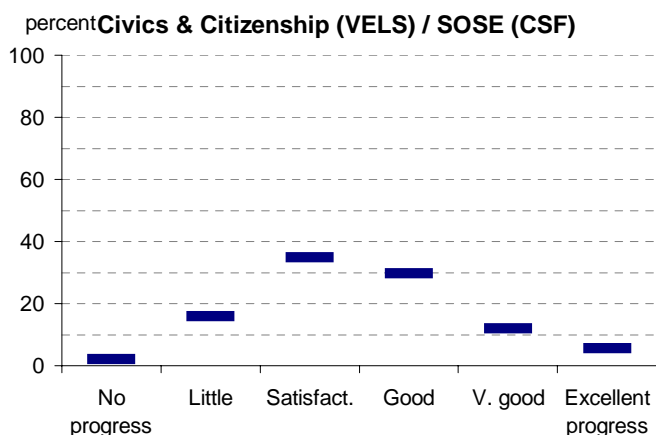
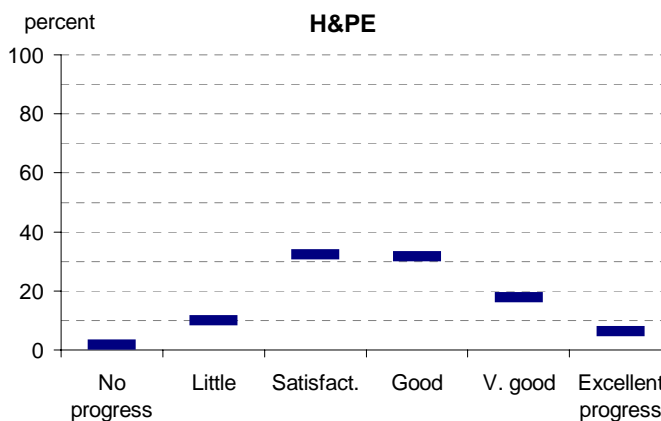
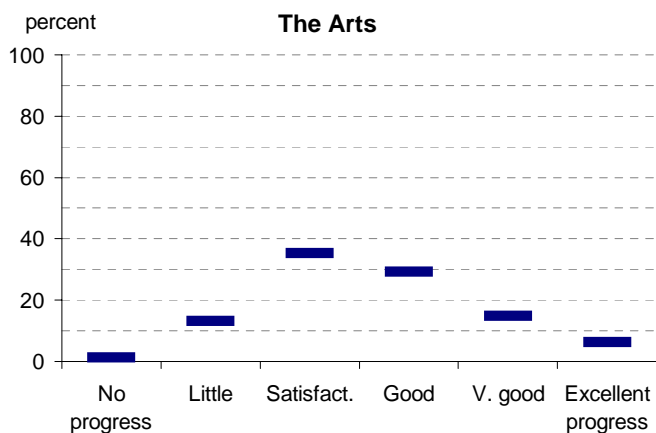
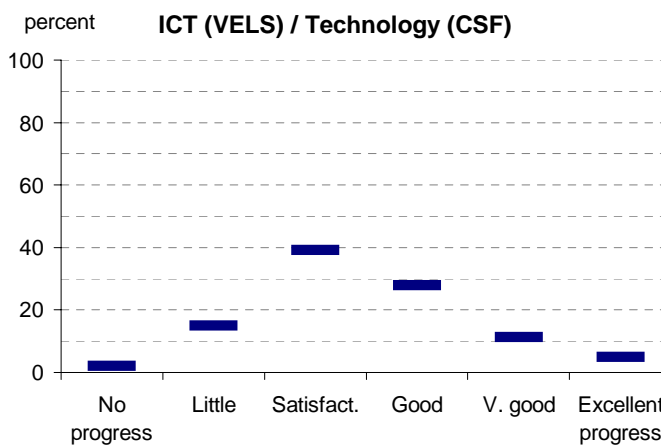
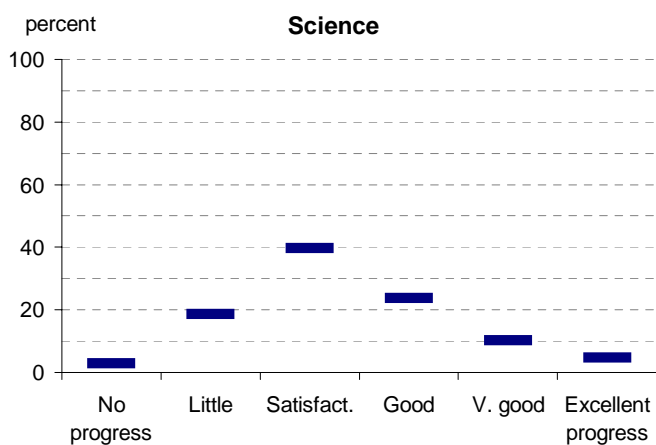
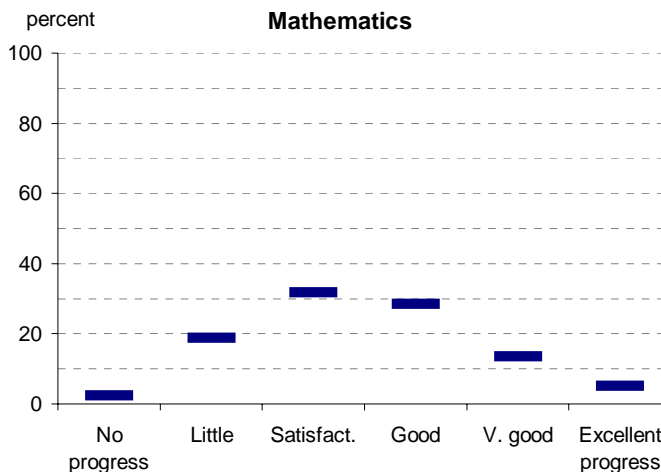
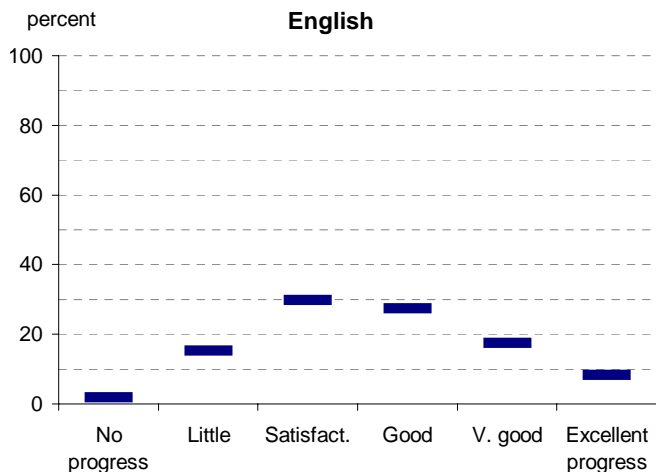
Source of data: Data transmitted from school to DoE via an online web-form.

	No progress progress (%)	Little progress (%)	Satisfactory progress (%)	Good progress (%)	Very good progress (%)	Excellent progress (%)	Total students assessed ¹ (no.)
2002 (by CSF KLA)							
English							
Mathematics							
Science							
Technology							
The Arts							
H&PE							
SOSE							
2003 (by CSF KLA)							
English							
Mathematics							
Science							
Technology							
The Arts							
H&PE							
SOSE							
2004 (by CSF KLA)							
English							
Mathematics							
Science							
Technology							
The Arts							
H&PE							
SOSE							
2005 (by CSF KLA)							
English							
Mathematics							
Science							
Technology							
The Arts							
H&PE							
SOSE							
2006 (by VELS Domain)							
English							
Mathematics							
Science							
ICT							
The Arts							
H&PE							
Civics & Citizenship							
2005 Primary state benchmarks (by CSF KLA) (2006 benchmarks are not available at this stage)							
English	2	15	30	27	17	8	
Mathematics	2	19	32	29	14	5	
Science	3	19	40	24	10	5	
Technology	2	15	39	28	11	5	
The Arts	1	13	35	29	15	6	
H&PE	2	10	32	32	18	6	
SOSE	2	16	35	30	12	6	

Note: ¹ If schools provided percentages only, it is not possible to report the number of students assessed. In these cases, the total percentage (100) will be shown.

Teacher Assessment of Student Progress (PSD students)

School no: 2897
 School name: Carnegie Primary School

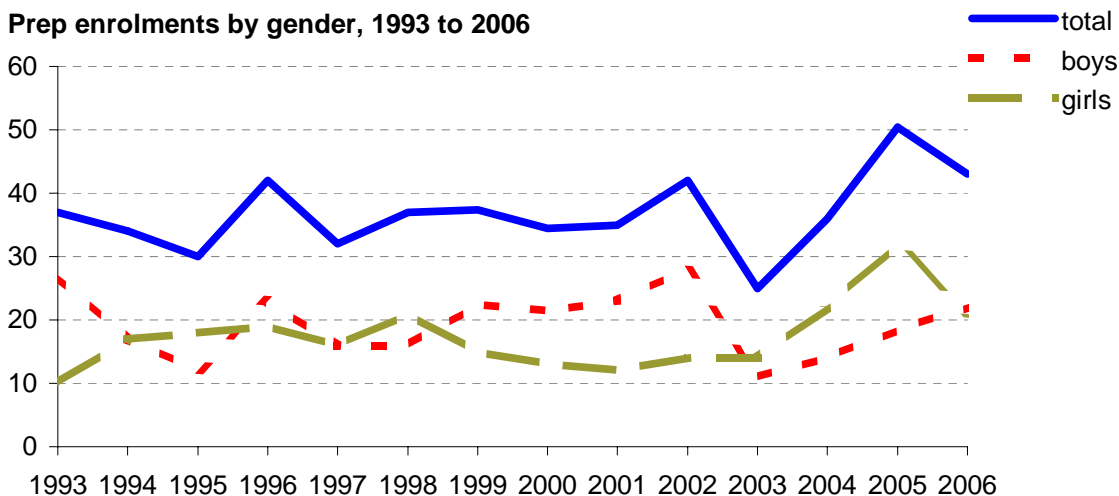
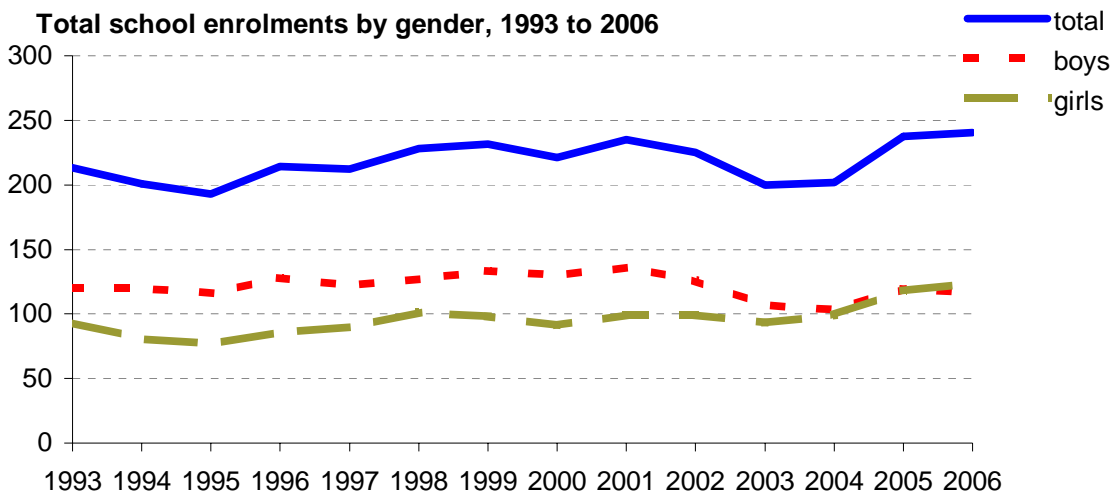


- 2002 (by CSF KLA)
- 2003 (by CSF KLA)
- 2004 (by CSF KLA)
- 2005 (by CSF KLA)
- 2006 (by VELS Domain)
- 2005 Primary state benchmarks (by CSF KLA)

Enrolments

School no: 2897
School name: Carnegie Primary School
Explanation: Enrolments at February census.
Source of data: February census.

Year	Total school enrolment			Prep enrolment			Year 7 enrolments		
	boys	girls	total	boys	girls	total	boys	girls	total
1993	120	93	213	27	10	37			
1994	120	81	201	17	17	34			
1995	116	77	193	12	18	30			
1996	128	86	214	23	19	42			
1997	122	90	212	16	16	32			
1998	127	101	228	16	21	37			
1999	133	98	231	22	15	37			
2000	130	91	221	21	13	34			
2001	136	99	235	23	12	35			
2002	126	99	225	28	14	42			
2003	107	93	200	11	14	25			
2004	103	99	202	14	22	36			
2005	119	118	237	18	32	50			
2006	116	124	240	22	21	43			



Student Absence

NEW - Student Absence by FTE student

School no: 2897

School name: Carnegie Primary School

Source of data: Data retrieved electronically from CASES21 at time of rollover.

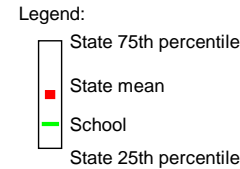
Explanation: The average (mean) number of absent days* per student. Up to 2006, the formula used to calculate the average number of absent days per student was based on student headcount. From 2006, the formula will be based on FTE** students. The new formula will provide a more accurate summary of student absence. For 2006, student absence will be provided for both student headcount and FTE student. Note that 20 absent days equates to 1 absent day per fortnight, and 10 absent days to 1 absent day per month.

Student Absence (by student headcount)

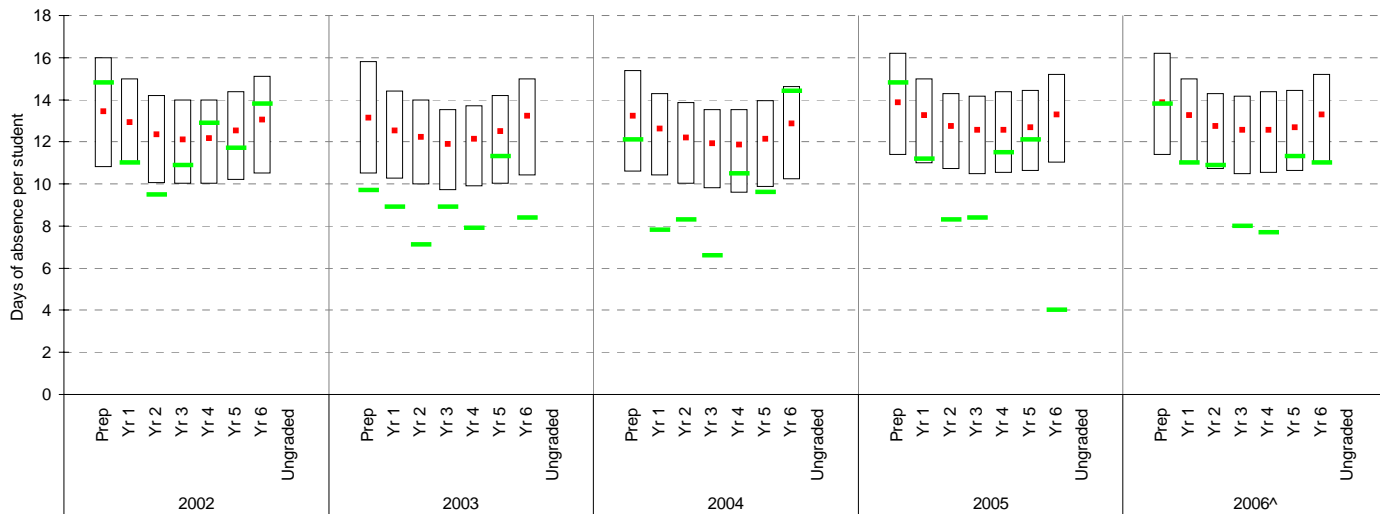
	School										2005 state benchmark^		
	2002		2003		2004		2005		2006		25th ptile	Mean	75th ptile
	Enrolments	Avg absent days / student	Enrolments	Avg absent days / student	Enrolments	Avg absent days / student	Enrolments	Avg absent days / student	Enrolments	Avg absent days / student			
Prep	38	14.8	28	9.7	43	12.1	57	14.8	47	13.8	11.4	13.9	16.2
Yr 1	28	11	37	8.9	33	7.8	43	11.2	53	11	11	13.3	15
Yr 2	30	9.5	24	7.1	45	8.3	30	8.3	38	10.9	10.7	12.8	14.3
Yr 3	27	10.9	35	8.9	30	6.6	45	8.4	27	8	10.5	12.6	14.2
Yr 4	22	12.9	27	7.9	34	10.5	31	11.5	42	7.7	10.5	12.6	14.4
Yr 5	27	11.7	21	11.3	28	9.6	52	12.1	30	11.3	10.6	12.7	14.4
Yr 6	36	13.8	30	8.4	21	14.4	6	4	28	11	11	13.3	15.2
Ungraded													
P-6 mean		12.2		8.9		9.7		11.2		10.7		13	

Student Absence (by FTE** student)

	School 2006		2006 state benchmark^^		
	Enrolments	Avg absent days / FTE** student	25th ptile	Mean	75th ptile
Prep	43.9	14.7			
Yr 1	47.2	12.2			
Yr 2	34.2	11.9			
Yr 3	25.6	8.5			
Yr 4	37.9	8.5			
Yr 5	25.6	13.2			
Yr 6	25.6	11.9			
Ungraded					
P-6 mean		11.7			

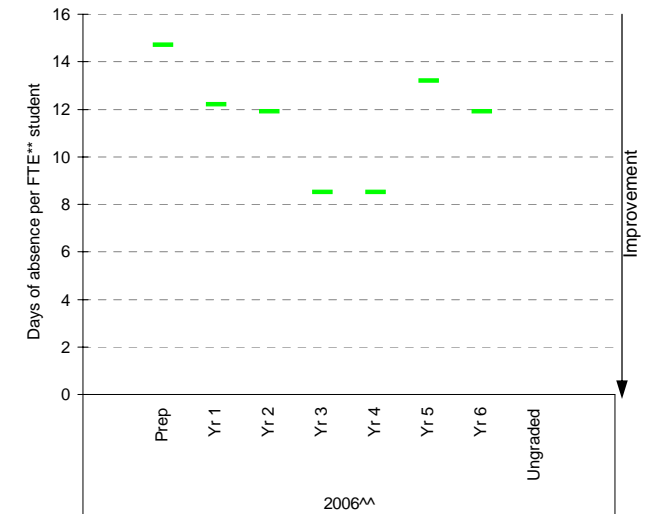


Student absence (by student headcount), school plotted against state benchmarks^, 2002 to 2006



Notes: * Includes non-curriculum absences only (absence codes 200, 201, 202, 203, 205, 206, 207, 208, 209, 210, 211, 300, 401, 500, 700, 800, 804, 805, 900).
 ^ 2006 benchmarks are not available at this stage. In the meantime, 2005 benchmarks are shown.

Student absence (by FTE** student), school plotted against state benchmarks^^, 2006



Notes: ** FTE = Full Time Equivalent (including part-time and part-year fractions).
 ^^ 2006 benchmarks are not available at this stage.

Parent Opinion

School no: 2897

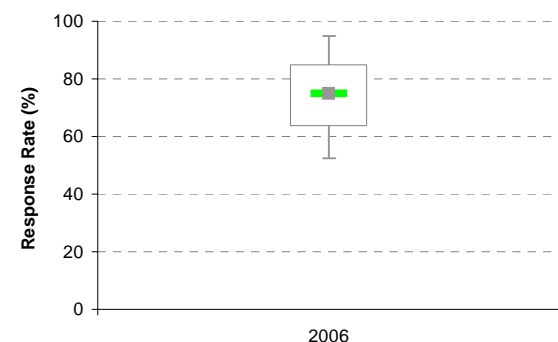
School name: Carnegie Primary School

Explanation: A self-completion questionnaire to obtain parents' opinions of the school. Parents rated a number of statements using a scale where 1=strongly disagree & 7=strongly agree. The statements were grouped into the following categories.

Source of data: Data scanned from questionnaires completed by parents.

Variable	Year	School mean	State Primary median	Variable	Year	School mean	State Primary median
School Improvement	2006	5.85	5.71	Extra Curricula	2006	5.12	5.07
Approachability	2006	6.05	5.81	Homework	2006	5.27	5.23
Teacher Morale	2006	6.06	5.82	General Satisfaction	2006	6.08	5.87
Parent Input	2006	5.76	5.59	Student Safety*	2006	4.95	5.13
Stimulating Learning	2006	5.99	5.81	Classroom Behaviour*	2006	4.68	4.15
Behaviour Management	2006	5.91	5.51	Connectedness to Peers	2006	5.95	5.83
Reporting	2006	5.04	5.45	Student Motivation	2006	5.63	5.66
Learning Focus	2006	5.79	5.71	Social Skills	2006	5.98	5.76
Transitions	2006	5.74	5.72	School Connectedness	2006	6.01	5.83

School response rate against Primary school distribution

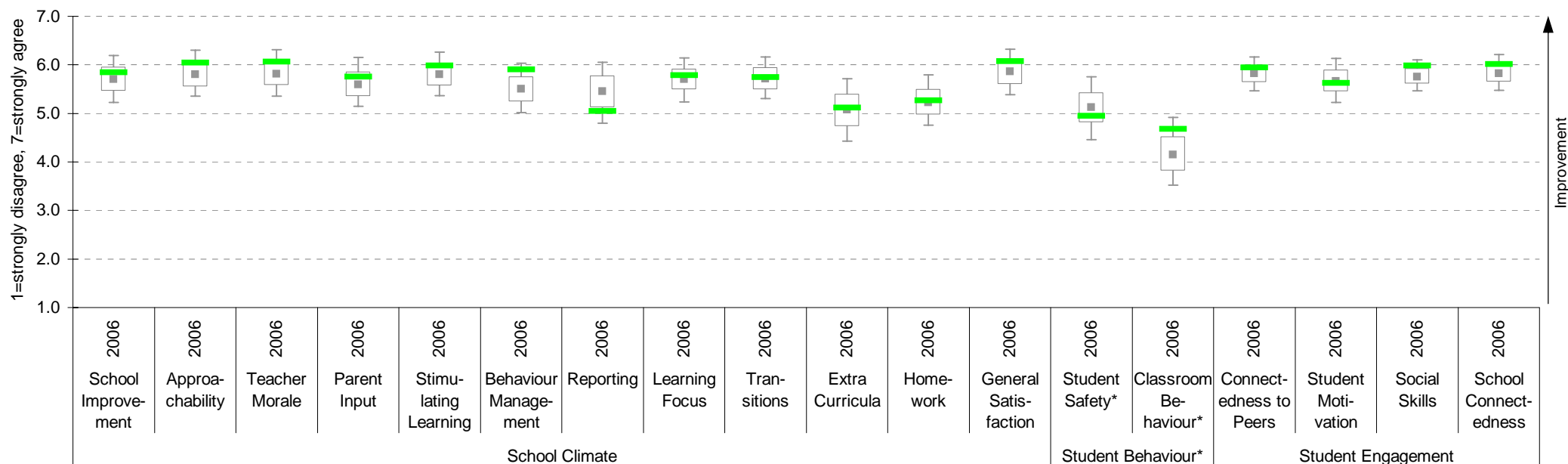


	Number of respondents	Number invited	Response Rate
2006	39	52	75%

Legend:

- State 90th percentile
- State 75th percentile
- State Median
- State 25th percentile
- School
- State 10th percentile

Parent Opinion, school plotted on state Primary benchmarks 2006



Notes: ^ Benchmarks available for Primary, Secondary, Pri/Sec, Special and SDS schools.

* Parents' responses to all negatively phrased questions have been reversed for reporting purposes. Across all variables, the higher the score or percentile rank, the more positive parents' perceptions.

Parent Opinion (pre-2006)

School no: 2897

School name: Carnegie Primary School

Explanation: A self-completion questionnaire to obtain parents' opinions of the school. Parents rated a number of statements using a scale where 1=strongly disagree & 6=strongly agree. The statements were grouped into the following categories.

Source of data: From 2004, data scanned from questionnaires completed by parents.

Year	Number of respondents
2004	121
2005	39

Variable	Year	School	State Primary Benchmarks
Quality of Teaching*	2001	4.95	5.18
	2002	5.25	5.21
	2003	5.23	5.20
	2004	5.10	5.24
	2005	5.20	5.28
Curriculum and Standards	2004	5.01	5.23
	2005	5.07	5.25
Reporting and Feedback	2004	5.05	5.15
	2005	5.18	5.16

Variable	Year	School	State Primary Benchmarks
Student Behaviour	2004	5.37	5.40
	2005	5.46	5.44
School Climate	2004	5.34	5.37
	2005	5.42	5.41
School / Parent Relations	2004	5.52	5.50
	2005	5.50	5.51
	2005	5.50	5.51
Extra-Curricular	2004	4.74	5.08
	2005	4.66	5.07

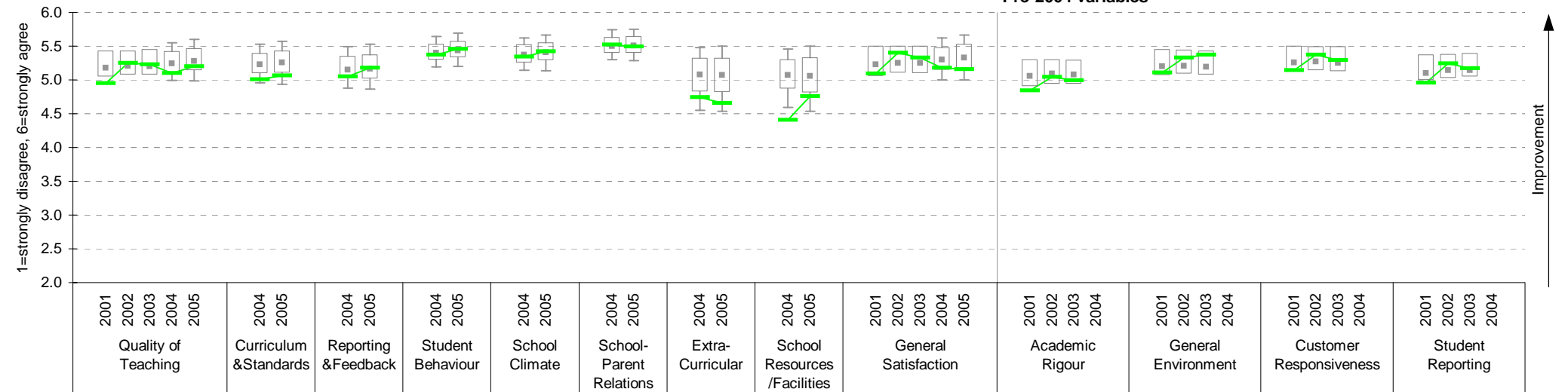
Variable	Year	School	State Primary Benchmarks
School Resources / Facilities	2004	4.41	5.07
	2005	4.76	5.06
General Satisfaction*	2001	5.09	5.23
	2002	5.40	5.25
	2003	5.33	5.25
	2004	5.18	5.30
	2005	5.15	5.33

Pre-2004 variables^

Variable	Year	School	State Primary Benchmarks
Academic Rigour*	2001	4.84	5.06
	2002	5.04	5.09
	2003	4.99	5.08
	2004	N/A^	
General Environment*	2001	5.11	5.20
	2002	5.33	5.21
	2003	5.37	5.19
	2004	N/A^	

Variable	Year	School	State Primary Benchmarks
Customer Responsiveness*	2001	5.14	5.26
	2002	5.37	5.27
	2003	5.29	5.25
	2004	N/A^	
Student Reporting*	2001	4.96	5.10
	2002	5.24	5.14
	2003	5.17	5.14
	2004	N/A^	

Parent Opinion, school plotted on state Primary benchmarks 2001 to 2005



Notes: * All pre-2004 data has been converted from the pre-2004 scale (2-7) to the 2004 scale (1-6).

** Benchmarks available for Primary, Secondary, Pri/Sec, Special and SDS schools.

^ These variables were part of the pre-2004 Parent Opinion Survey. There are no benchmarks for these variables from 2004.

Whilst most schools conducted the 2004 survey in 2004, some had already completed the pre-2004 version and were not required to conduct the survey again. The only comparable variables between the 2004 survey and the pre-2004 survey are Quality of Teaching & General Satisfaction.

Legend: State 90th percentile
State 75th percentile
State Mean
State 25th percentile
School
State 10th percentile

Staff Opinion

School no: 2897

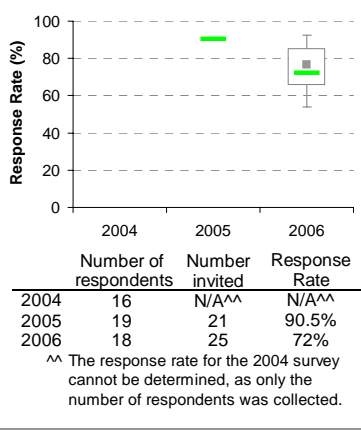
School name: Carnegie Primary School

Explanation: A self-completion questionnaire to obtain the staff's opinions of the school. The survey was administered online using the School Organisational Health Questionnaire.

Source of data: Data transmitted from school staff to DoE via an online survey application.

Variable					Variable					Variable				
No.	Name	Year	School mean	State Primary median	No.	Name	Year	School mean	State Primary median	No.	Name	Year	School mean	State Primary median
1	Individual Morale	2004	80.6	73.7	8	Appraisal & Recognition	2004	73.7	69.8	15	Learning Environment	2004	87.0	78.6
		2005	82.5	75.5			2005	74.6	70.5			2005	84.8	80.3
		2006	80.0	75.6			2006	79.6	71.6			2006	92.0	81.3
2	School Morale	2004	88.8	76.1	9	Professional Growth	2004	71.9	72.3	16	Student Misbehaviour	2004	25.7	26.0
		2005	88.2	77.6			2005	69.5	73.8			2005	11.9	22.9
		2006	89.4	78.1			2006	78.1	74.2			2006	13.7	21.7
3	Supportive Leadership	2004	88.8	78.6	10	Curriculum Coordination	2004	81.8	74.5	17	Classroom Misbehaviour	2004	13.6	15.0
		2005	88.9	80.0			2005	79.9	74.6			2005	18.9	14.6
		2006	90.3	80.0			2006	83.9	75.0			2006	20.0	13.8
4	Role Clarity	2004	81.3	78.3	11	Effective Discipline Policy	2004	77.6	77.6	18	Excessive Work Demands	2004	34.8	42.4
		2005	80.9	79.2			2005	79.0	79.7			2005	24.3	42.8
		2006	86.5	79.6			2006	92.4	79.9			2006	26.4	42.9
5	Professional Interaction	2004	91.3	79.3	12	Student Orientation	2004	90.3	85.0	19	Individual Distress	2004	15.6	23.0
		2005	87.2	80.5			2005	93.4	85.9			2005	11.9	22.2
		2006	88.7	80.7			2006	95.2	86.1			2006	17.2	21.6
6	Participative Decision-Making	2004	87.9	73.2	13	Student Motivation	2004	77.1	75.0	20	School Distress	2004	15.0	29.9
		2005	83.9	74.8			2005	85.0	75.9			2005	12.6	29.2
		2006	85.1	75.1			2006	87.9	76.8			2006	15.8	28.8
7	Goal Congruence	2004	82.8	80.0	14	Student Decision-Making	2004	78.3	66.2					
		2005	87.1	81.4			2005	80.0	68.4					
		2006	86.9	81.7			2006	82.1	69.4					

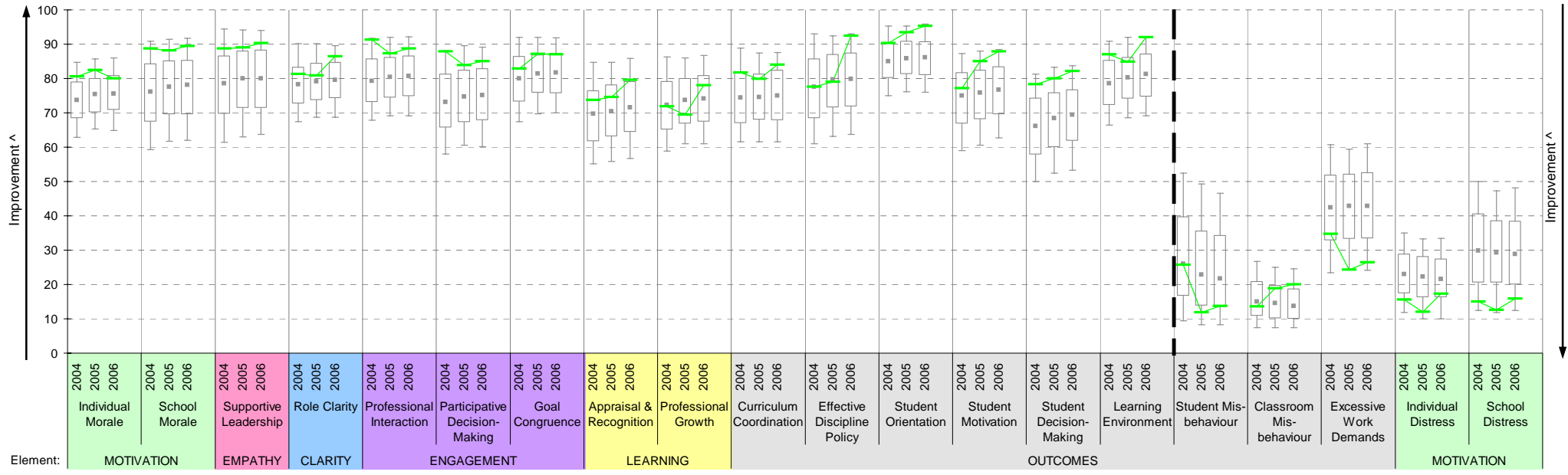
School response rate* against Primary school distribution



Notes:
 * If there were 6 or less respondents, table data is not shown for confidentiality reasons.
 If there were 3 or less respondents, graph data is not shown for confidentiality reasons.
 ^ The higher the school mean, the more positive the outcome for variables 1 to 15.
 The lower the school mean, the more positive the outcome for variables 16 to 20.

Legend:
 State 90th percentile
 State 75th percentile
 State Median
 State 25th percentile
 State 10th percentile
 School

Staff Opinion, school plotted on state Primary benchmarks 2004 to 2006



Staff Sick Leave

School no: 2897

School name: Carnegie Primary School

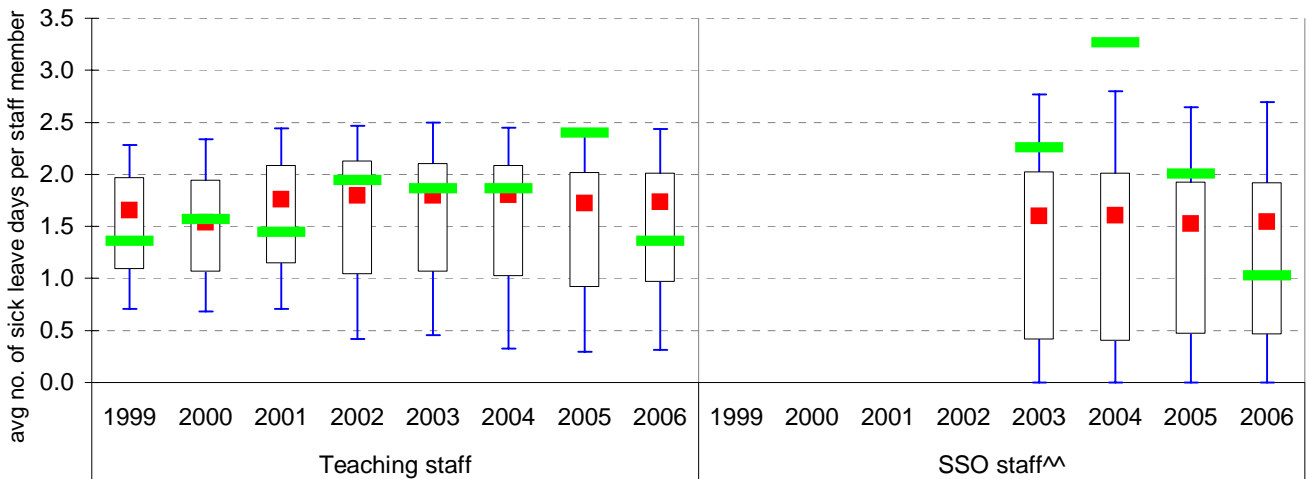
Explanation: The number of non-certificated and total sick leave days taken per staff member. A detailed explanation on how staff sick leave is calculated is provided in the Annual Reports Frequently Asked Questions page of the Standards website (<http://www.sofweb.vic.edu.au/standards/account/arepq.htm>).

Source of data: Human Resources Management System (HRMS)^.

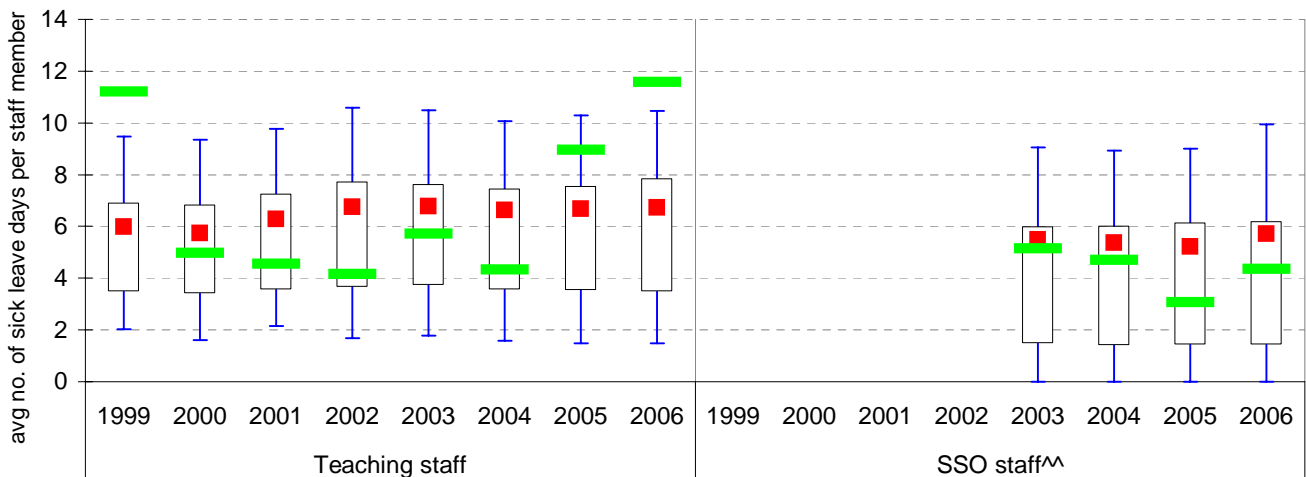
Staff Type	Non-Certificated sick leave days per staff member^								2006 bmark mean
	1999	2000	2001	2002	2003	2004	2005	2006	
Teacher	1.36	1.57	1.45	1.95	1.86	1.86	2.40	1.36	1.73
SSO^^					2.26	3.27	2.01	1.03	1.54

Staff Type	Total sick leave days per staff member^								2006 bmark mean
	1999	2000	2001	2002	2003	2004	2005	2006	
Teacher	11.20	4.96	4.55	4.16	5.72	4.33	8.96	11.57	6.73
SSO^^					5.14	4.69	3.07	4.35	5.71

NON-CERTIFICATED sick leave, 1999 to 2006



TOTAL sick leave, 1999 to 2006



Note: ^ There may be some discrepancy between the results from CASES & those from HRMS. The latter are considered to be more accurate.
^^ Data for SSO (School Services Officer) staff is only available from 2003.

Legend:

- State 90th percentile
- State 75th percentile
- State Mean
- State 25th percentile
- School
- State 10th percentile

Teaching Staff Retention

School no: 2897

School name: Carnegie Primary School

Explanation: The retention rate of teaching staff is determined by matching staff payroll records for the last pay in June of one year (Year A), to the last pay in June of the following year (Year B).

Source of data: Human Resources Management System (HRMS).

Teaching Staff*

Year A	Year B	Number of Teaching Staff in Year A	Number of Teaching Staff retained in Year B	Teaching Staff Retention Rate	Statewide Average
2005	2006	17	15	88%	87%

Of the 17 teaching service staff at June 2005 (including those on leave without pay), 15 or 88% were still at the school at June 2006. This figure across all Government schools was 87%.

Ongoing Teaching Staff*^

Year A	Year B	Number of Ongoing Teaching Staff in Year A	Number of Ongoing Teaching Staff retained in Year B	Ongoing Teaching Staff Retention Rate	Statewide Average
2005	2006	13	12	92%	91%

Of the 13 ongoing teaching service staff at June 2005 (including those on leave without pay), 12 or 92% were still at the school at June 2006. This figure across all Government schools was 91%.

Note: * Teaching staff includes Principal class, Teacher class and Instructor class. Teaching staff employed as visiting teachers, guidance officers, curriculum consultants, etc. are excluded as they are not charged to a particular school.

^ Not including fixed term staff, except for where staff had changed from ongoing in Year A to fixed term in Year B.

Bank Balances

School no: 2897

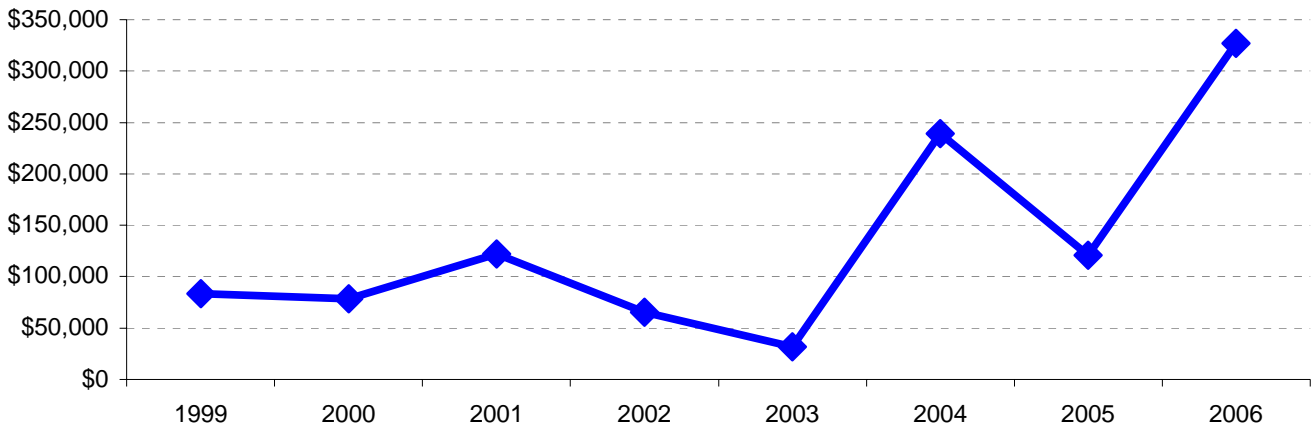
School name: Carnegie Primary School

Explanation: Account balance figures include official and investment accounts, and are calculated by taking the opening balance at 1st January plus the total receipts at 31st December less total payments at 31st December.

Account Balances (Official plus Investment Accounts)

1999	\$83,146	2003	\$31,779
2000	\$78,418	2004	\$239,375
2001	\$122,086	2005	\$120,705
2002	\$65,676	2006	\$327,110

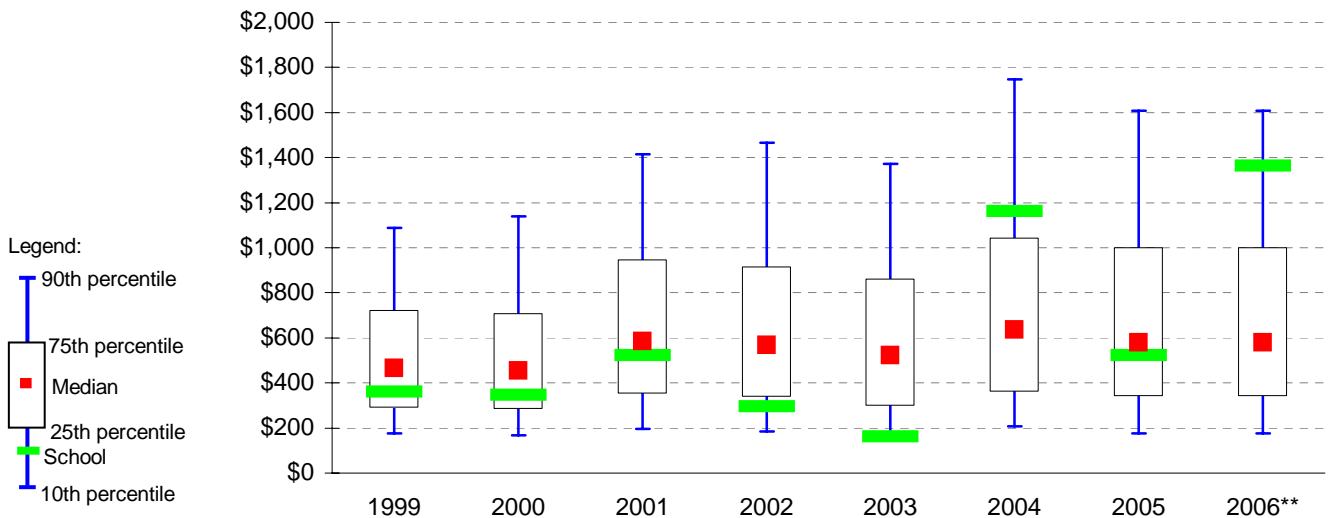
Account Balances, 1999 to 2006



Account Balances (Official plus Investment Accounts) per student^

1999	\$361	2003	\$162
2000	\$348	2004	\$1,162
2001	\$522	2005	\$522
2002	\$295	2006	\$1,363

School account balances per student enrolled in August census plotted on state Primary benchmarks*, 1999 to 2006



Notes:

^ The account balance per student has been calculated to enable some comparison to be made between schools.

* Benchmarks for primary, secondary, pri/sec, SDS, special and language schools.

** 2006 benchmarks are not available at this stage. In the meantime, 2005 benchmarks are shown.