

# **Carnegie Primary School (2897)**

---

## 2007 School Level Report

---

---

Please check the data in this report. If, after comparing it with your own records, you deem it to be incorrect or incomplete, follow the directions on the web page below:

- <http://www.sofweb.vic.edu.au/standards>, then click on '**Accountability and Improvement**', then click on '**School Performance Reports**'.
- 
-

# Contents

---

	<b>Page No.</b>
Privacy	3
SFO Density and LBOTE	4
Assessment of Reading Prep to Year 2	5-6
Teacher Judgments against the VELs	7-15
AIM Reading	16
AIM Number	17
Teacher Assessment of Student Progress (PSD students)	18-19
Enrolments	20
Student Absence	21
Parent Opinion	22-23
Staff Opinion	24
Staff Sick Leave	25
Teaching Staff Retention	26
Bank Balances	27

## Privacy

---

When reporting on the school's performance to the school community, care must be taken to avoid the disclosure of information that can directly or indirectly identify an individual. This may be a particular issue when reporting on the achievement of specific cohorts of students or the opinions of staff where there are small numbers.

In situations where confidentiality cannot be assured, schools may wish to report on the mean result or provide a written comment on school, year level or cohort performance.

Where the School Level Report is provided to school council members as part of any annual reporting process, or used for discussion on a school's performance, such as in consultation with the school community in the school self-evaluation process, it is important to remind school community members of their duty to only use this information for the purpose it was provided, and that the material must be kept confidential.

It is important to note that information that identifies an individual or can be used with other readily available information to identify a person is now protected by the *Information Privacy Act 2000* (<http://www.education.vic.gov.au/about/deptpolicies/informationprivacy.htm>).

---

# SFO Density and LBOTE

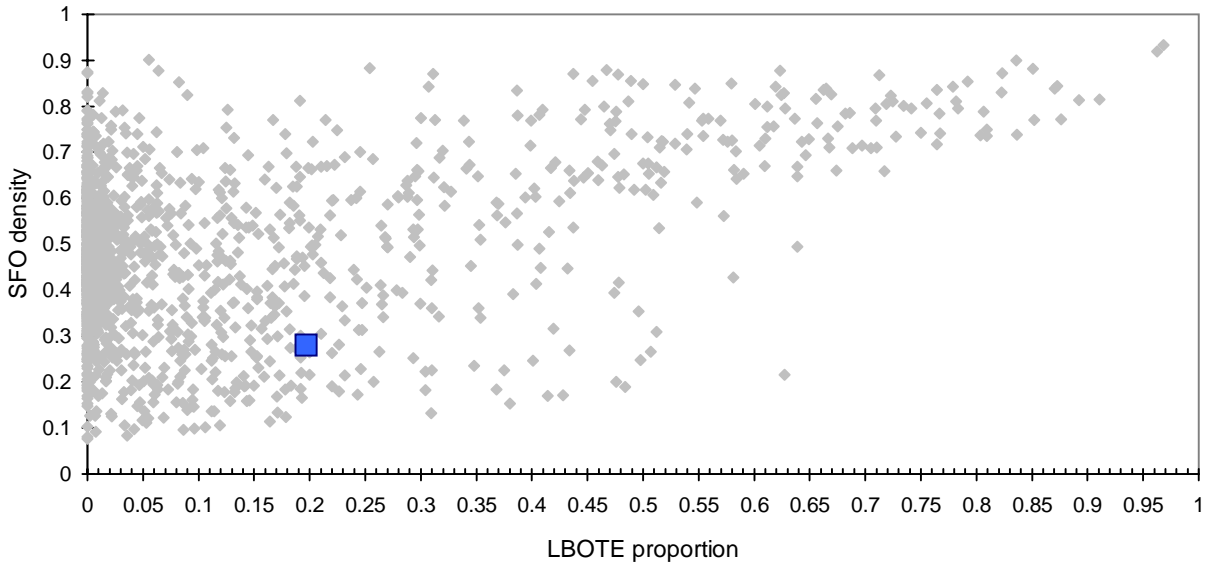
School no: 2897

School name: Carnegie Primary School

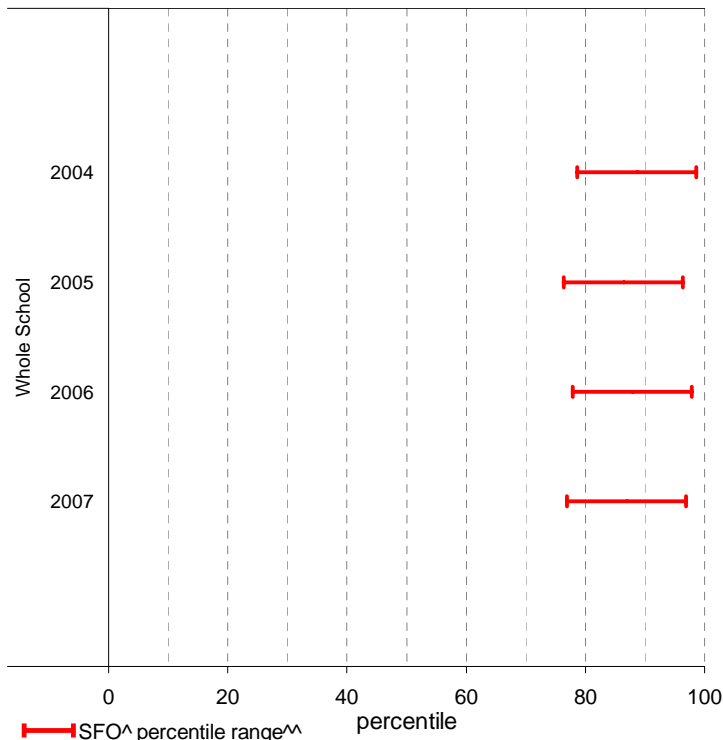
Explanation: The chart below plots the school's 2007 SFO (Student Family Occupation) density<sup>^</sup> and LBOTE (Language Background Other Than English) proportion\* against that of all government schools. This school is highlighted as a square on the chart.

	2000	2001	2002	2003	2004	2005	2006	2007
SFO density <sup>^</sup> :					0.30	0.31	0.26	0.28
LBOTE proportion*:	0.26	0.26	0.22	0.25	0.25	0.24	0.24	0.20

School's 2007 SFO density and LBOTE proportion against that of all government schools



School's SFO<sup>^</sup> percentile range<sup>^^</sup> over time



Notes: <sup>^</sup> The higher the SFO density, the lower the SFO percentile, the lower the socio-economic status (SES).  
<sup>^^</sup> The school's SFO percentile range shows the 20% of schools with an SFO Density most like this school.  
 \* From 2007, a student is LBOTE if either the student or one parent/guardian speaks a language other than English at home. Prior to 2007, a student is LBOTE if the student or one of the parents was born in a non-English speaking country.

## Assessment of Reading: Prep to Year 2

School no: 2897

School name: Carnegie Primary School

Explanation: Students' ability to read unsighted text is assessed at the end of each year. The data presented here includes 'deemed not capable' students.

More detailed information (including data where deemed not capable students are excluded) is available in the Assessment of Reading report, available from the School Performance Reports website.

Source of data: Data transmitted from school to DEECD via an online web-form.

	Prep										Year 1										Year 2												
	School									State	School									State	School									State			
	2003		2004		2005		2006		2007		2007	2003		2004		2005		2006		2007		2007	2003		2004		2005		2006		2007		2007
	(No.)	%	(No.)	%	(No.)	%	(No.)	%	(No.)	%	%	(No.)	%	(No.)	%	(No.)	%	(No.)	%	(No.)	%	%	(No.)	%	(No.)	%	(No.)	%	(No.)	%	%		
<b>Level 1</b>																																	
100%	(24)	88.9	(34)	89.5	(43)	87.8	(28)	63.6	(30)	53.6	68.1	(36)	100.0	(28)	96.6	(36)	94.7	(44)	93.6	(45)	97.8	94.9											
90-99%	(3)	11.1	(4)	10.5	(6)	12.2	(13)	29.5	(26)	46.4	26.2			(1)	3.4	(2)	5.3	(2)	4.3	(1)	2.2	4.4											
80-89%							(1)	2.3			2.5						(1)	2.1			0.3												
51-79%							(2)	4.5			1.6										0.2												
50% or below											1.7										0.3												
Total	(27)	100.0	(38)	100.0	(49)	100.0	(44)	100.0	(56)	100.0	100.0	(36)	100.0	(29)	100.0	(38)	100.0	(47)	100.0	(46)	100.0	100.0											
<b>Subtotal 90-100%</b>	<b>(27)</b>	<b>100.0</b>	<b>(38)</b>	<b>100.0</b>	<b>(49)</b>	<b>100.0</b>	<b>(41)</b>	<b>93.2</b>	<b>(56)</b>	<b>100.0</b>	<b>94.3</b>	<b>(36)</b>	<b>100.0</b>	<b>(29)</b>	<b>100.0</b>	<b>(38)</b>	<b>100.0</b>	<b>(46)</b>	<b>97.9</b>	<b>(46)</b>	<b>100.0</b>	<b>99.3</b>											
<b>Level 5</b>																																	
100%	(21)	77.8	(33)	86.8	(42)	85.7	(28)	63.6	(31)	55.4	44.5	(31)	86.1	(28)	96.6	(35)	92.1	(38)	80.9	(41)	89.1	82.0	(19)	79.2	(35)	89.7	(25)	96.2	(30)	88.2	(45)	95.7	90.9
90-99%	(6)	22.2	(4)	10.5	(4)	8.2	(11)	25.0	(19)	33.9	35.9	(5)	13.9	(1)	3.4	(3)	7.9	(8)	17.0	(5)	10.9	15.9	(5)	20.8	(4)	10.3	(1)	3.8	(4)	11.8	(1)	2.1	8.6
80-89%			(1)	2.6	(1)	2.0	(2)	4.5	(1)	1.8	5.2						(1)	2.1			0.6												
51-79%					(1)	2.0			(4)	7.1	3.9										0.4												
50% or below					(1)	2.0	(3)	6.8	(1)	1.8	10.5										1.1								(1)	2.1	0.3		
Total	(27)	100.0	(38)	100.0	(49)	100.0	(44)	100.0	(56)	100.0	100.0	(36)	100.0	(29)	100.0	(38)	100.0	(47)	100.0	(46)	100.0	100.0	(24)	100.0	(39)	100.0	(26)	100.0	(34)	100.0	(47)	100.0	100.0
<b>Subtotal 90-100%</b>	<b>(27)</b>	<b>100.0</b>	<b>(37)</b>	<b>97.4</b>	<b>(46)</b>	<b>93.9</b>	<b>(39)</b>	<b>88.6</b>	<b>(50)</b>	<b>89.3</b>	<b>80.4</b>	<b>(36)</b>	<b>100.0</b>	<b>(29)</b>	<b>100.0</b>	<b>(38)</b>	<b>100.0</b>	<b>(46)</b>	<b>97.9</b>	<b>(46)</b>	<b>100.0</b>	<b>97.9</b>	<b>(24)</b>	<b>100.0</b>	<b>(39)</b>	<b>100.0</b>	<b>(26)</b>	<b>100.0</b>	<b>(34)</b>	<b>100.0</b>	<b>(46)</b>	<b>97.9</b>	<b>99.5</b>
<b>Level 15</b>																																	
100%											37.6	(17)	47.2	(8)	27.6	(13)	34.2	(22)	46.8	(24)	52.2	37.6	(15)	62.5	(28)	71.8	(20)	76.9	(21)	61.8	(42)	89.4	64.1
90-99%											49.1	(17)	47.2	(21)	72.4	(23)	60.5	(22)	46.8	(15)	32.6	49.1	(8)	33.3	(7)	17.9	(6)	23.1	(13)	38.2	(4)	8.5	32.3
80-89%											6.1			(1)	2.6	(2)	4.3	(6)	13.0		6.1				(1)	2.6						1.8	
51-79%											2.9			(1)	2.6						2.9				(2)	5.1						0.7	
50% or below											4.3					(1)	2.1	(1)	2.2		4.3				(1)	4.2	(1)	2.6			(1)	2.1	1.1
Total											100.0	(36)	100.0	(29)	100.0	(38)	100.0	(47)	100.0	(46)	100.0	100.0	(24)	100.0	(39)	100.0	(26)	100.0	(34)	100.0	(47)	100.0	100.0
<b>Subtotal 90-100%</b>											<b>86.7</b>	<b>(34)</b>	<b>94.4</b>	<b>(29)</b>	<b>100.0</b>	<b>(36)</b>	<b>94.7</b>	<b>(44)</b>	<b>93.6</b>	<b>(39)</b>	<b>84.8</b>	<b>86.7</b>	<b>(23)</b>	<b>95.8</b>	<b>(35)</b>	<b>89.7</b>	<b>(26)</b>	<b>100.0</b>	<b>(34)</b>	<b>100.0</b>	<b>(46)</b>	<b>97.9</b>	<b>96.4</b>
<b>Level 20</b>																																	
100%																							(11)	45.8	(24)	61.5	(15)	57.7	(11)	32.4	(29)	61.7	48.8
90-99%																							(12)	50.0	(11)	28.2	(11)	42.3	(23)	67.6	(15)	31.9	46.0
80-89%																																	2.5
51-79%																																	0.9
50% or below																																	1.8
Total																																	1.8
<b>Subtotal 90-100%</b>																																	<b>94.8</b>

	2003	2004	2005	2006	2007	2003	2004	2005	2006	2007	2003	2004	2005	2006	2007
No. of students DNC <sup>1</sup> :	0	0	0	3	0	0	0	0	1	0	1	4	0	0	1
No. of students at risk <sup>2</sup> :	0	0	0	3	0	0	0	0	1	0	1	4	0	0	1

**Notes:**

<sup>1</sup> Students can be DNC (deemed not capable) only if they meet one of the conditions (insufficient English, receiving D&I funding, insufficient attendance at the school or referred from Reading Recovery) AND read below the minimum standard.

<sup>2</sup> The number of students at risk is the number of students reading at less than 90% accuracy at Level 1 for Prep, Level 5 for Year 1 or Level 15 for Year 2.

# Assessment of Reading: Prep to Year 2

School no: 2897

School name: Carnegie Primary School

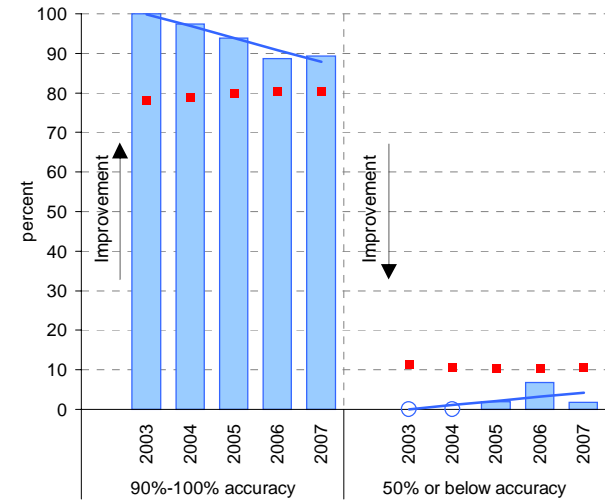
Explanation: Students' ability to read unsighted text is assessed at the end of each year.

Source of data: Data transmitted from school to DEECD via an online web-form.

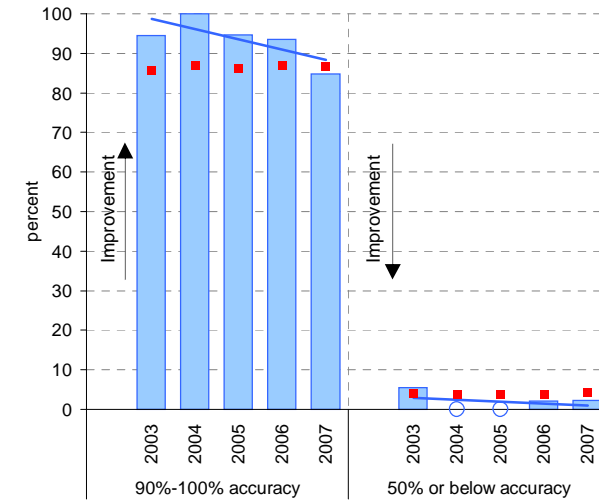
Notes: \* The school trendline is being trialled. It is only plotted when there is data for each calendar year.

^ This data is highly skewed, with a lot of schools obtaining the best possible result, particularly in Year 2. The maximum achievable percentile is therefore significantly less than 100.

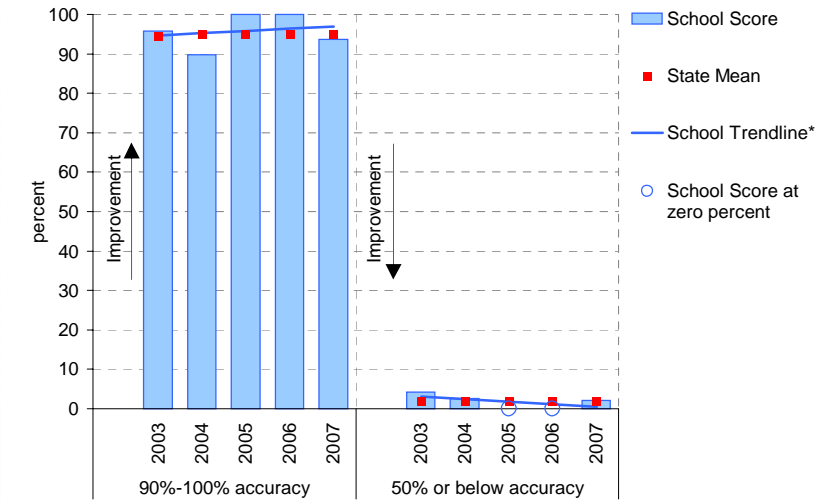
Year level: Prep  
Text level: Level 5



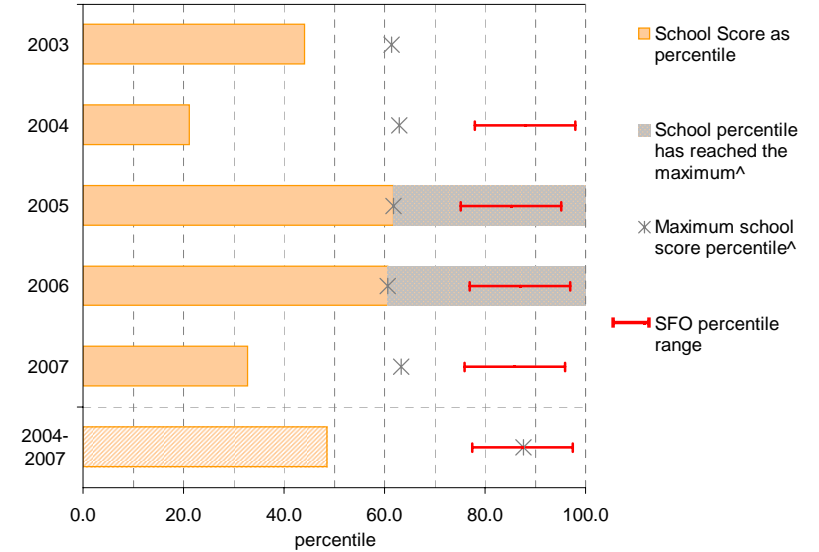
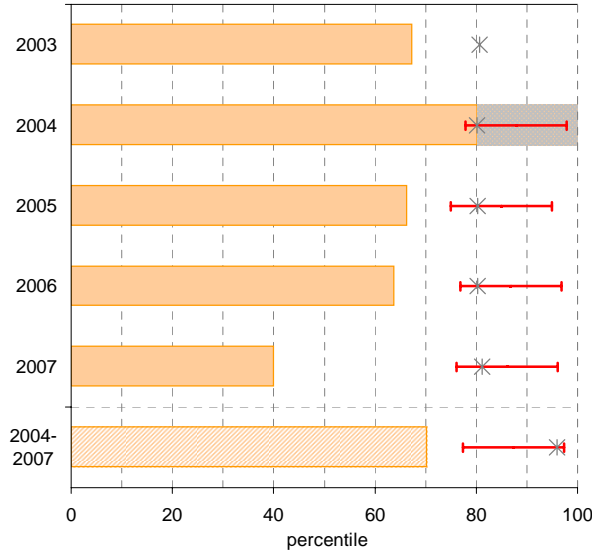
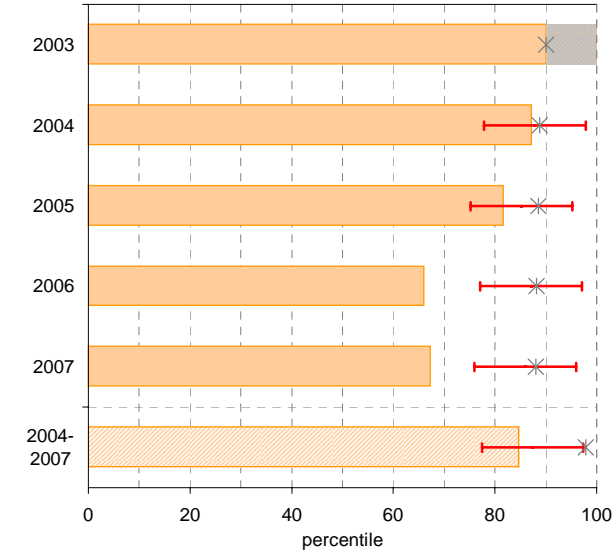
Year level: Year 1  
Text level: Level 15



Year level: Year 2  
Text level: Level 20



90%-100% accuracy as percentile against SFO percentile range



# Teacher Judgments against the VELS - Year levels Prep-6 combined

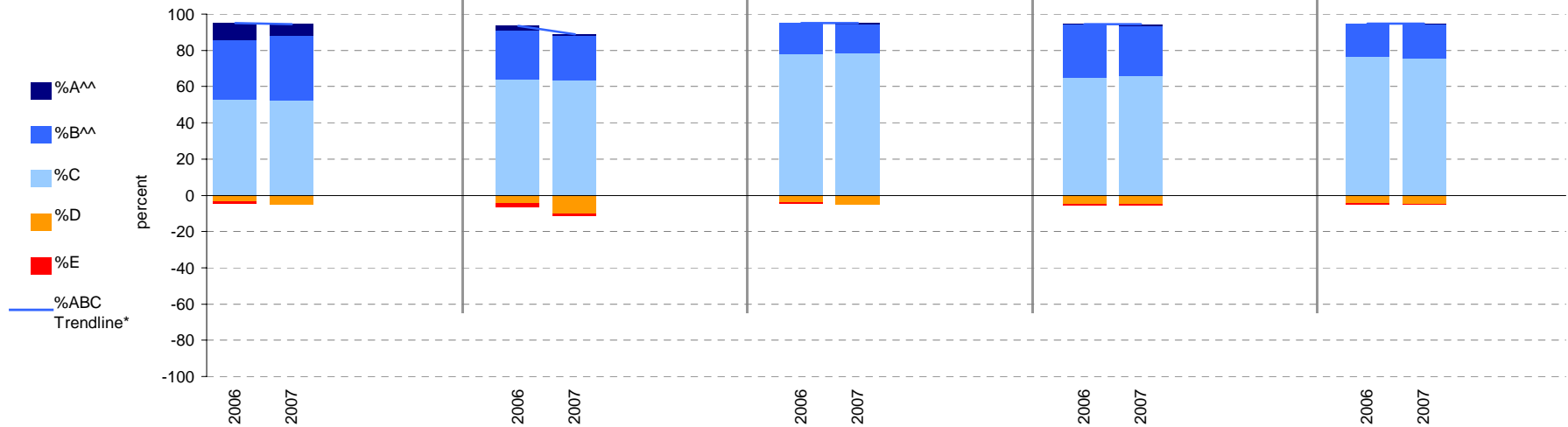
School no: 2897

School name: Carnegie Primary School

Source of data: Data retrieved electronically from CASES21.

Explanation: Teacher judgments of student progress against the VELS.

Year Levels:	Reading							Writing					Speaking & Listening					Number					Measurement, Chance & Data								
	total students	% A^^	% B^^	% C	% D	% E	% ABC	total students	% A^^	% B^^	% C	% D	% E	% ABC	total students	% A^^	% B^^	% C	% D	% E	% ABC	total students	% A^^	% B^^	% C	% D	% E	% ABC			
Prep-6	2006	228	10	33	53	4	1	228	3	27	64	4	2	228	0	17	78	4	1	235	0	29	65	5	1	234	0	18	76	4	1
(combined)	2007	258	7	36	52	5	0	258	1	24	64	10	1	258	0	16	78	5	0	267	1	28	66	5	0	267	0	19	76	5	0



Notes: \* The school trendline is being trialled. It is only plotted when there is data for each calendar year.  
 ^^ The cutoff between grades A and B changed in 2007. Further information is available on the following website:  
<http://www.education.vic.gov.au/studentlearning/studentreports/schools/whatsnew.htm>.

# Teacher Judgments against the VELS - English (primary)

School no: 2897

School name: Carnegie Primary School

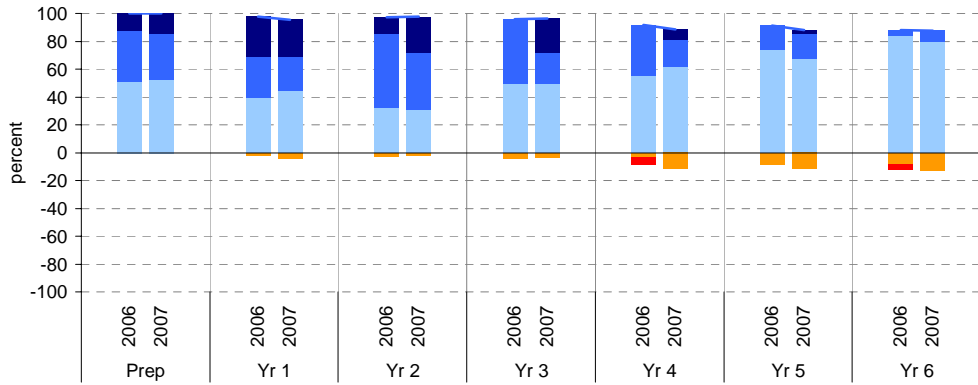
Source of data: Data retrieved electronically from CASES21.

Explanation: Teacher judgments of student progress against the VELS.

Notes: \* The school trendline is being trialled. It is only plotted when there is data for each calendar year.  
 \*\* In 2006, approx. 850 schools assessed their students against the 0.25 VELS scale. 2006 benchmarks are therefore based on a subset of schools. 2007 benchmarks will be calculated in August, when data from all schools has been submitted.  
 ^ Percentiles for 2007 will be calculated in August, when data from all schools has been submitted.  
 ^^ The cutoff between grades A and B changed in 2007. Further information is available on the following website:  
<http://www.education.vic.gov.au/studentlearning/studentreports/schools/whatsnew.htm>.

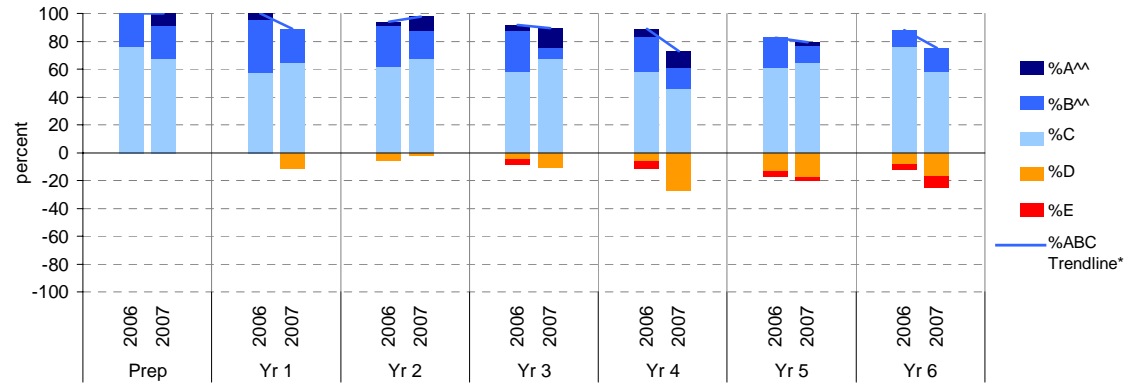
## Reading

	total students	% of students by grade					Mean Score			total students	% of students by grade					Mean Score			
		A^	B^	C	D	E	School	State**			A^	B^	C	D	E	School	State**		
Yr 4	2006	36	0	36	56	3	6	2.99	2.96	Yr 4	2006	36	0	36	56	3	6	2.99	2.96
	2007	26	8	19	62	12	0	3.01			2007	26	8	19	62	12	0	3.01	
Yr 5	2006	23	0	17	74	9	0	3.48	3.44	Yr 5	2006	23	0	17	74	9	0	3.48	3.44
	2007	34	3	18	68	12	0	3.44			2007	34	3	18	68	12	0	3.44	
Yr 6	2006	25	0	4	84	8	4	3.87	3.94	Yr 6	2006	25	0	4	84	8	4	3.87	3.94
	2007	24	0	8	79	13	0	3.89			2007	24	0	8	79	13	0	3.89	
Yr 3	2006	24	0	46	50	4	0	2.58	2.49	Yr 3	2006	24	0	46	50	4	0	2.58	2.49
	2007	28	25	21	50	4	0	2.65			2007	28	25	21	50	4	0	2.65	
Yr 2	2006	34	12	53	32	3	0	2.28	2.04	Yr 2	2006	34	12	53	32	3	0	2.28	2.04
	2007	45	27	24	44	4	0	1.69			2007	45	27	24	44	4	0	1.69	
Yr 1	2006	45	29	29	40	2	0	1.84	1.57	Yr 1	2006	45	29	29	40	2	0	1.84	1.57
	2007	55	15	33	53	0	0	1.13			2007	55	15	33	53	0	0	1.13	
Prep	2006	41	12	37	51	0	0	1.16	1.01	Prep	2006	41	12	37	51	0	0	1.16	1.01
	2007	55	15	33	53	0	0	1.13			2007	55	15	33	53	0	0	1.13	



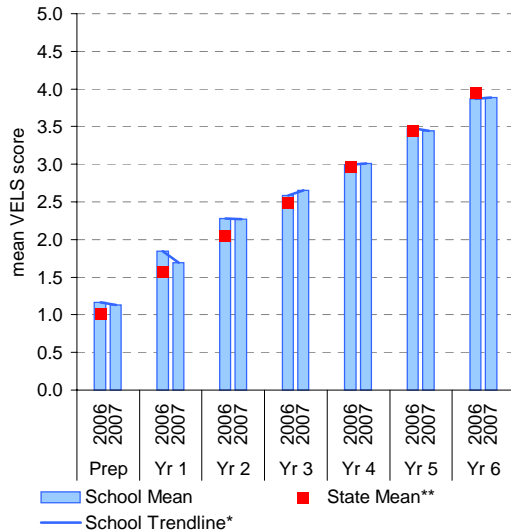
## Writing

	total students	% of students by grade					Mean Score			total students	% of students by grade					Mean Score			
		A^	B^	C	D	E	School	State**			A^	B^	C	D	E	School	State**		
Yr 4	2006	36	6	25	58	6	6	3.00	2.89	Yr 4	2006	36	6	25	58	6	6	3.00	2.89
	2007	26	12	15	46	27	0	2.92			2007	26	12	15	46	27	0	2.92	
Yr 5	2006	23	0	22	61	13	4	3.41	3.38	Yr 5	2006	23	0	22	61	13	4	3.41	3.38
	2007	34	3	12	65	18	3	3.38			2007	34	3	12	65	18	3	3.38	
Yr 6	2006	25	0	12	76	8	4	3.88	3.88	Yr 6	2006	25	0	12	76	8	4	3.88	3.88
	2007	24	0	17	58	17	8	3.82			2007	24	0	17	58	17	8	3.82	
Yr 3	2006	24	4	29	58	4	4	2.51	2.42	Yr 3	2006	24	4	29	58	4	4	2.51	2.42
	2007	28	14	7	68	11	0	2.45			2007	28	14	7	68	11	0	2.45	
Yr 2	2006	34	3	29	62	6	0	2.06	1.95	Yr 2	2006	34	3	29	62	6	0	2.06	1.95
	2007	45	0	24	64	11	0	1.47			2007	45	0	24	64	11	0	1.47	
Yr 1	2006	45	4	38	58	0	0	1.61	1.47	Yr 1	2006	45	4	38	58	0	0	1.61	1.47
	2007	55	9	24	67	0	0	1.06			2007	55	9	24	67	0	0	1.06	
Prep	2006	41	0	24	76	0	0	0.94	0.97	Prep	2006	41	0	24	76	0	0	0.94	0.97
	2007	55	9	24	67	0	0	1.06			2007	55	9	24	67	0	0	1.06	

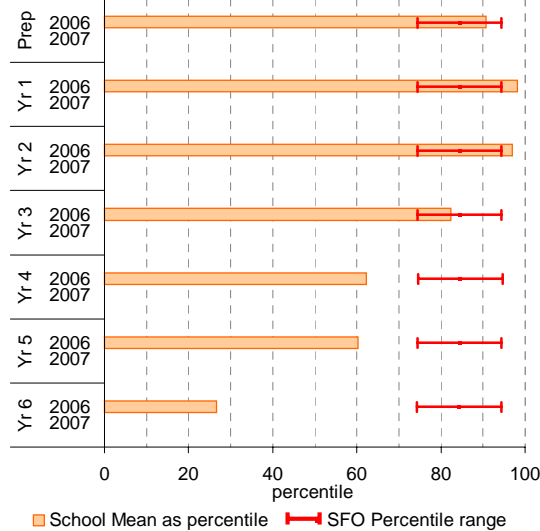


## Reading

School Mean against State Mean

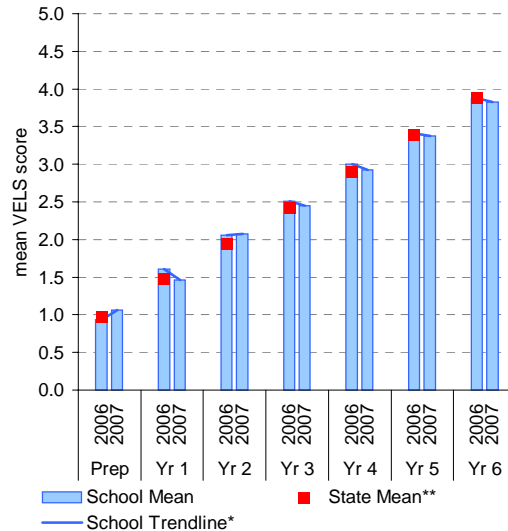


School Mean as percentile against SFO percentile range^

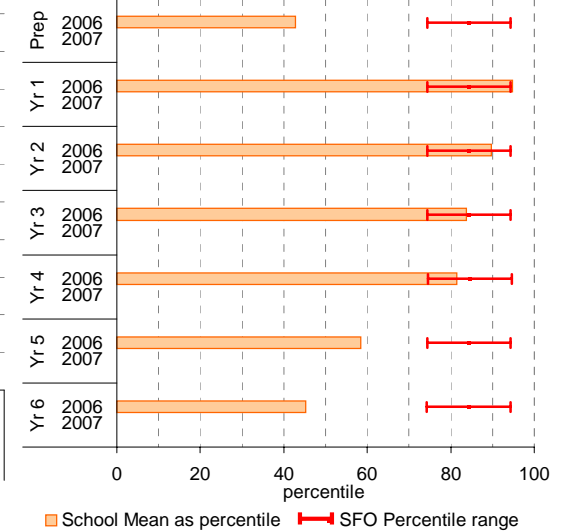


## Writing

School Mean against State Mean



School Mean as percentile against SFO percentile range^



# Teacher Judgments against the VELS - English (primary)

School no: 2897

School name: Carnegie Primary School

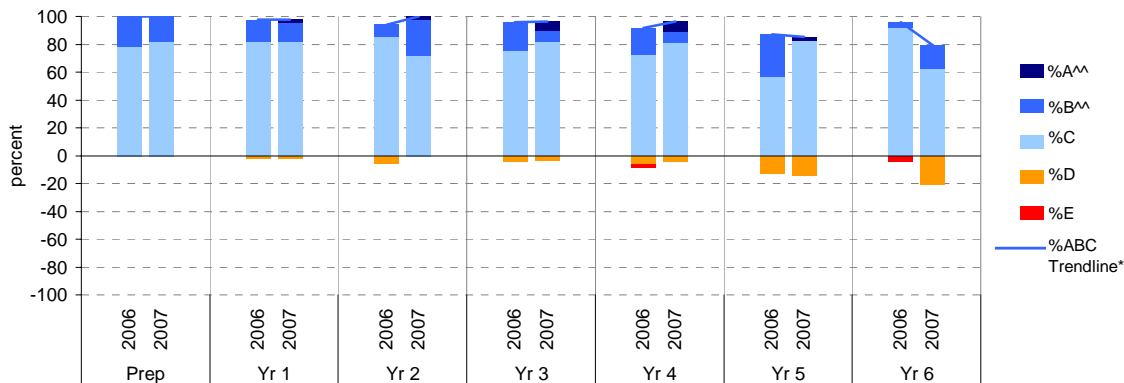
Source of data: Data retrieved electronically from CASES21.

Explanation: Teacher judgments of student progress against the VELS.

Notes: \* The school trendline is being trialled. It is only plotted when there is data for each calendar year.  
 \*\* In 2006, approx. 850 schools assessed their students against the 0.25 VELS scale. 2006 benchmarks are therefore based on a subset of schools. 2007 benchmarks will be calculated in August, when data from all schools has been submitted.  
 ^ Percentiles for 2007 will be calculated in August, when data from all schools has been submitted.  
 ^^ The cutoff between grades A and B changed in 2007. Further information is available on the following website:  
<http://www.education.vic.gov.au/studentlearning/studentreports/schools/whatsnew.htm>.

## Speaking and Listening

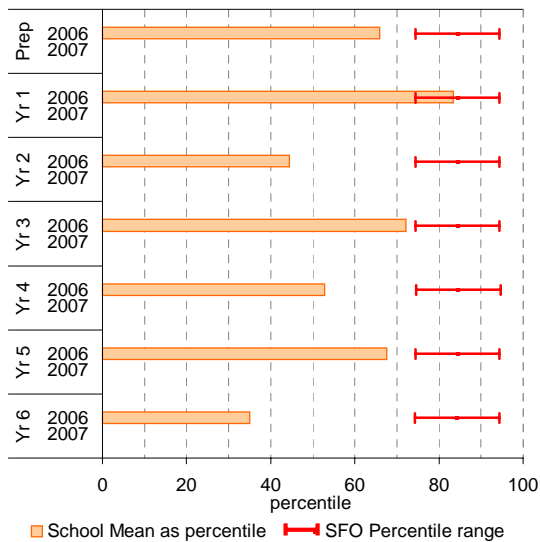
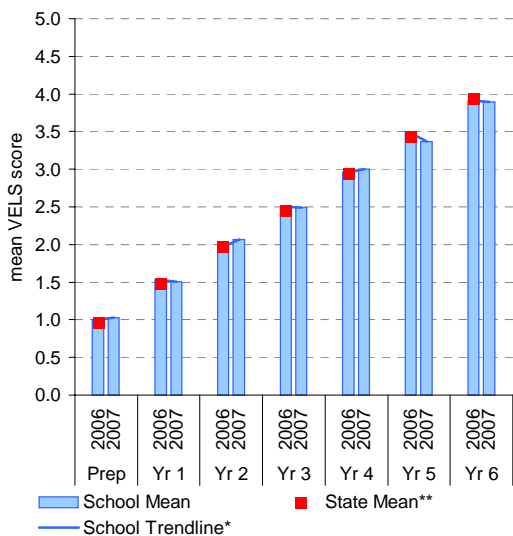
	total students	% of students by grade					Mean Score			total students	% of students by grade					Mean Score			
		A^^	B^^	C	D	E	School	State**			A^^	B^^	C	D	E	School	State**		
Prep	2006	41	0	22	78	0	0	1.00	0.97	Yr 4	2006	36	0	19	72	6	3	2.96	2.94
	2007	55	0	18	82	0	0	1.03			2007	26	8	8	81	4	0	3.00	
Yr 1	2006	45	0	16	82	2	0	1.53	1.48	Yr 5	2006	23	0	30	57	13	0	3.48	3.43
	2007	45	2	13	82	2	0	1.51			2007	34	3	0	82	15	0	3.37	
Yr 2	2006	34	0	9	85	6	0	1.97	1.98	Yr 6	2006	25	0	4	92	0	4	3.91	3.93
	2007	46	2	26	72	0	0	2.07			2007	24	0	17	63	21	0	3.90	
Yr 3	2006	24	0	21	75	4	0	2.50	2.45										
	2007	28	7	7	82	4	0	2.49											



## Speaking and Listening

School Mean against State Mean

School Mean as percentile against SFO percentile range^



# Teacher Judgments against the VELS - Mathematics (primary)

School no: 2897

School name: Carnegie Primary School

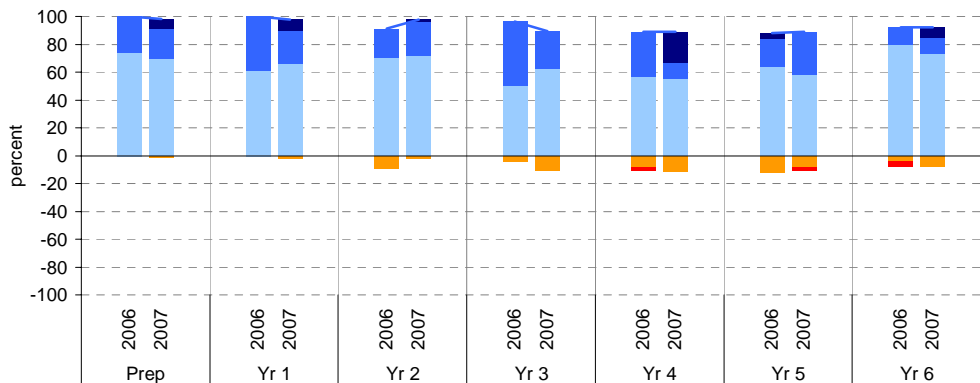
Source of data: Data retrieved electronically from CASES21.

Explanation: Teacher judgments of student progress against the VELS.

Notes: \* The school trendline is being trialled. It is only plotted when there is data for each calendar year.  
 \*\* In 2006, approx. 850 schools assessed their students against the 0.25 VELS scale. 2006 benchmarks are therefore based on a subset of schools. 2007 benchmarks will be calculated in August, when data from all schools has been submitted.  
 ^ Percentiles for 2007 will be calculated in August, when data from all schools has been submitted.  
 ^^ The cutoff between grades A and B changed in 2007. Further information is available on the following website:  
<http://www.education.vic.gov.au/studentlearning/studentreports/schools/whatsnew.htm>.

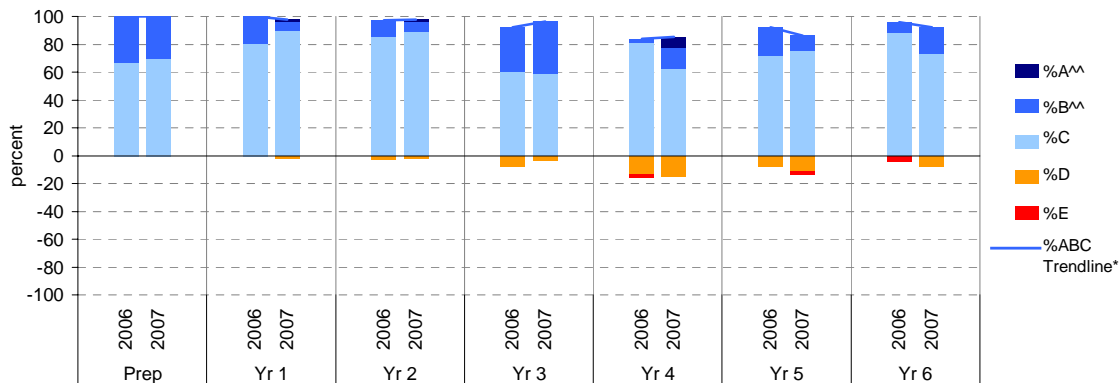
## Number

	total students	% of students by grade					Mean Score			total students	% of students by grade					Mean Score			
		A <sup>^^</sup>	B <sup>^^</sup>	C	D	E	School	State <sup>**</sup>			A <sup>^^</sup>	B <sup>^^</sup>	C	D	E	School	State <sup>**</sup>		
Yr 4	2006	37	0	32	57	8	3	2.99	2.95	Yr 4	2006	37	0	32	57	8	3	2.99	2.95
	2007	27	22	11	56	11	0	3.05			2007	27	22	11	56	11	0	3.05	
Yr 5	2006	25	4	20	64	12	0	3.45	3.43	Yr 5	2006	25	4	20	64	12	0	3.45	3.43
	2007	36	0	31	58	8	3	3.44			2007	36	0	31	58	8	3	3.44	
Yr 6	2006	25	0	12	80	4	4	3.91	3.93	Yr 6	2006	25	0	12	80	4	4	3.91	3.93
	2007	26	8	12	73	8	0	3.91			2007	26	8	12	73	8	0	3.91	
Yr 1	2006	46	0	39	61	0	0	1.60	1.51	Yr 1	2006	46	0	39	61	0	0	1.60	1.51
	2007	47	9	23	66	2	0	1.54			2007	47	9	23	66	2	0	1.54	
Yr 2	2006	34	0	21	71	9	0	1.99	1.99	Yr 2	2006	34	0	21	71	9	0	1.99	1.99
	2007	46	2	24	72	2	0	2.06			2007	46	2	24	72	2	0	2.06	
Yr 3	2006	26	0	46	50	4	0	2.55	2.46	Yr 3	2006	26	0	46	50	4	0	2.55	2.46
	2007	29	0	28	62	10	0	2.47			2007	29	0	28	62	10	0	2.47	



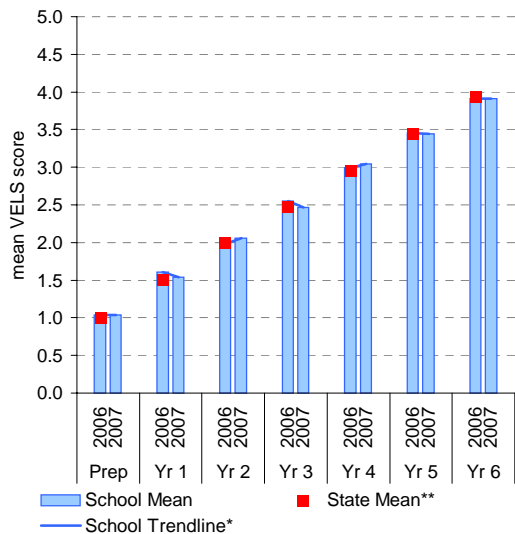
## Measurement, Chance and Data

	total students	% of students by grade					Mean Score			total students	% of students by grade					Mean Score			
		A <sup>^^</sup>	B <sup>^^</sup>	C	D	E	School	State <sup>**</sup>			A <sup>^^</sup>	B <sup>^^</sup>	C	D	E	School	State <sup>**</sup>		
Yr 4	2006	37	0	33	67	0	0	1.04	0.97	Yr 4	2006	37	0	33	67	0	0	1.04	0.97
	2007	27	7	15	63	15	0	2.85	2.94		2007	27	7	15	63	15	0	2.85	2.94
Yr 5	2006	25	0	20	72	8	0	3.48	3.42	Yr 5	2006	25	0	20	72	8	0	3.48	3.42
	2007	36	0	11	75	11	3	3.39			2007	36	0	11	75	11	3	3.39	
Yr 6	2006	25	0	8	88	0	4	3.97	3.92	Yr 6	2006	25	0	8	88	0	4	3.97	3.92
	2007	26	0	19	73	8	0	3.95			2007	26	0	19	73	8	0	3.95	
Yr 1	2006	46	0	20	80	0	0	1.53	1.48	Yr 1	2006	46	0	20	80	0	0	1.53	1.48
	2007	47	2	6	89	2	0	1.47			2007	47	2	6	89	2	0	1.47	
Yr 2	2006	34	0	12	85	3	0	1.99	1.97	Yr 2	2006	34	0	12	85	3	0	1.99	1.97
	2007	46	2	7	89	2	0	2.02			2007	46	2	7	89	2	0	2.02	
Yr 3	2006	25	0	32	60	8	0	2.52	2.45	Yr 3	2006	25	0	32	60	8	0	2.52	2.45
	2007	29	0	38	59	3	0	2.54			2007	29	0	38	59	3	0	2.54	

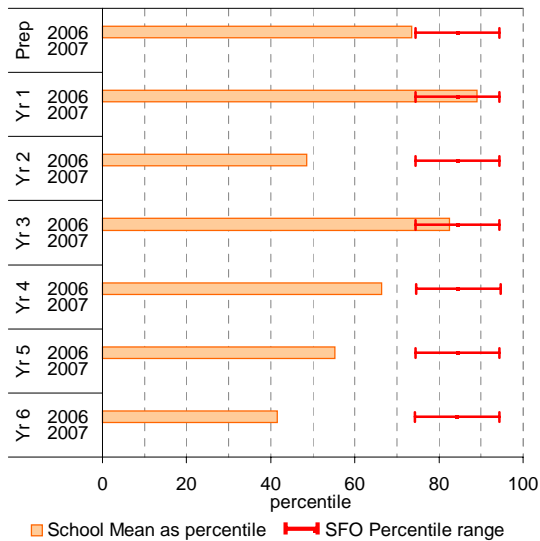


## Number

### School Mean against State Mean

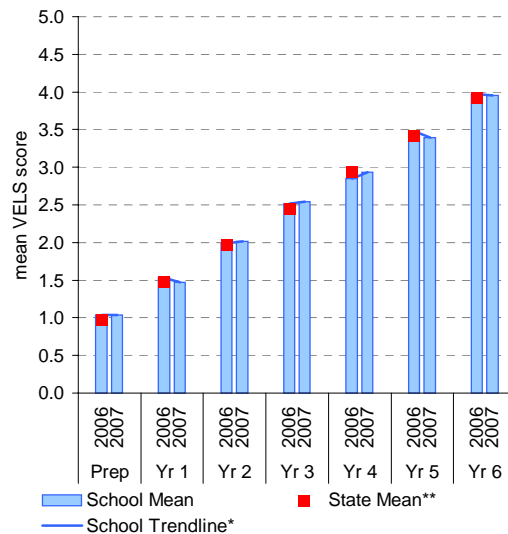


### School Mean as percentile against SFO percentile range^

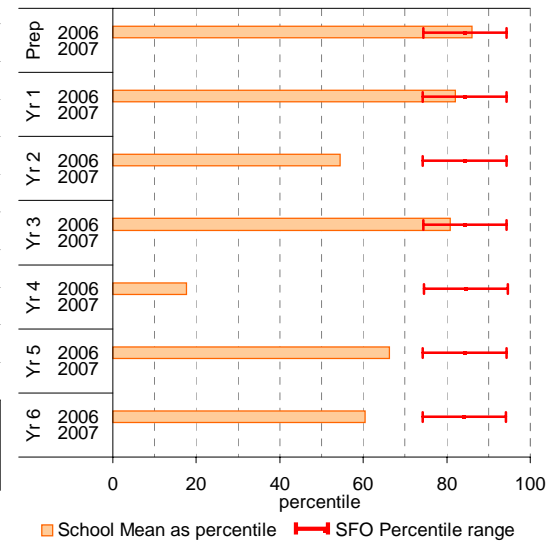


## Measurement, Chance and Data

### School Mean against State Mean



### School Mean as percentile against SFO percentile range^



# Teacher Judgments against the VELS - English (primary)

**School no:** 2897  
**School name:** Carnegie Primary School  
**Source of data:** Data retrieved electronically from CASES21.  
**Explanation:** Teacher judgments of student progress against the VELS.

## Reading

Year Level	Year	Total <sup>1</sup>	Assessed <sup>2</sup>	Level 1				Level 2				Level 3				Level 4				Level 5				Level 6				Level 6E			School mean	State mean*	Difference between school and state mean*			
				0.00	0.50	1.00	1.25	1.50	1.75	2.00	2.25	2.50	2.75	3.00	3.25	3.50	3.75	4.00	4.25	4.50	4.75	5.00	5.25	5.50	5.75	6.00	6.25	6.50	6.75							
prep	2007	55	55	7	22			18	4	2			1	1																						1.13
prep	2006	41	41	4	17			11	4	4	1																								1.16	
yr1	2007	48	45	2				1	19	11	9			2	1																				1.69	
prep	2005																																			
yr1	2006	45	45	1				18	8	5			7	5	1																				1.84	
yr2	2007	46	46					1	1	13			19	6	2	4																			2.27	
prep	2004																																			
yr1	2005																																			
yr2	2006	34	34					1	2	9			9	9	1	3																			2.28	
yr3	2007	29	28								1		4	10	6	4	3																		2.65	
yr1	2004																																			
yr2	2005																																			
yr3	2006	25	24								1		2	10	9	2																			2.58	
yr4	2007	27	26										1	2	3	13	5	1		1															3.01	
yr2	2004																																			
yr3	2005																																			
yr4	2006	37	36					1	1				1	5	15	9	4																		2.99	
yr5	2007	38	34										2	2	6	17	6	1																	3.44	
yr3	2004																																			
yr4	2005																																			
yr5	2006	26	23										1	1	1	16	4																		3.48	
yr6	2007	26	24													3	7	12	2																3.89	
yr4	2004																																			
yr5	2005																																			
yr6	2006	25	25										1		2	6	15	1																	3.87	
yr5	2004																																			
yr6	2005																																			
yr6	2004																																			

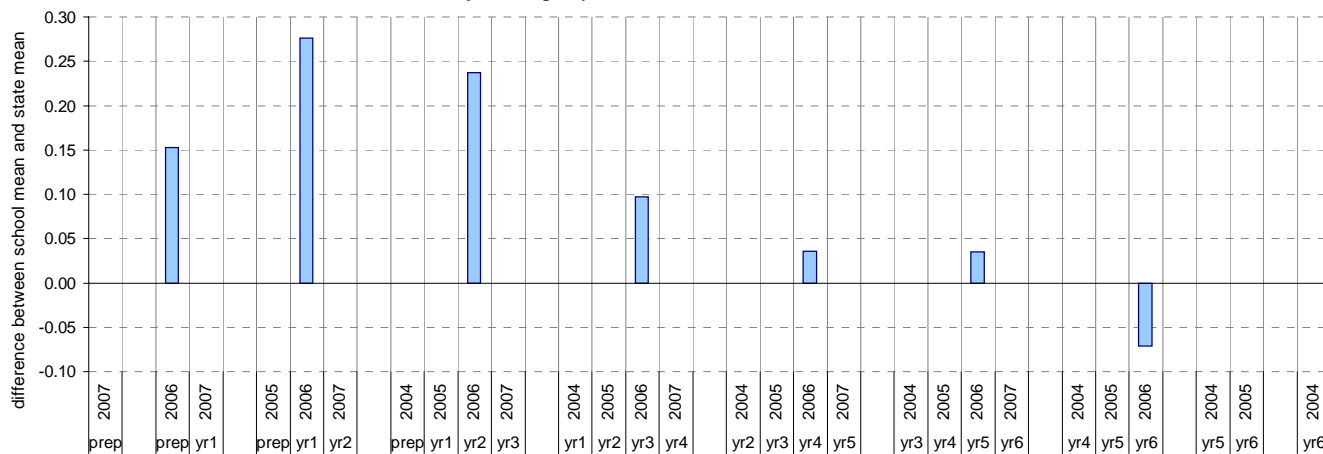
shading indicates a 'C' grade (at the expected standard) on the VELS scale.

<sup>1</sup> Students in group

<sup>2</sup> Total assessed

\* Note: In 2006, approx. 850 schools assessed their students against the 0.25 VELS scale. 2006 benchmarks are therefore based on a subset of schools. 2007 benchmarks will be calculated in August, when data from all schools has been submitted.

Difference between school mean and state mean\*, by cohort group





# Teacher Judgments against the VELS - English (primary)

**School no:** 2897  
**School name:** Carnegie Primary School  
**Source of data:** Data retrieved electronically from CASES21.  
**Explanation:** Teacher judgments of student progress against the VELS.

## Speaking and Listening

Year Level	Year	Total <sup>1</sup>	Assessed <sup>2</sup>	Level 1				Level 2				Level 3				Level 4				Level 5				Level 6				Level 6E	School mean	State mean*	Difference between school and state mean*			
				0.00	0.50	1.00	1.25	1.50	1.75	2.00	2.25	2.50	2.75	3.00	3.25	3.50	3.75	4.00	4.25	4.50	4.75	5.00	5.25	5.50	5.75	6.00	6.25					6.50	6.75	
prep	2007	55	55	2	43	10																							1.03					
prep	2006	41	41	5	27	8	1																				1.00	0.97	0.03					
yr1	2007	48	45	1	6	31	6	1																			1.51							
prep	2005																																	
yr1	2006	45	45	1	3	34	4	3																				1.53	1.48	0.05				
yr2	2007	46	46			2	31	12	1																				2.07					
prep	2004																																	
yr1	2005																																	
yr2	2006	34	34		1	1	2	27	3																				1.97	1.98	-0.01			
yr3	2007	29	28				1	5	18	2	2																				2.49			
yr1	2004																																	
yr2	2005																																	
yr3	2006	25	24			1	4	14	4	1																				2.50	2.45	0.05		
yr4	2007	27	26					1	4	17	2	2																				3.00		
yr2	2004																																	
yr3	2005																																	
yr4	2006	37	36			1	2	6	20	6	1																				2.96	2.94	0.02	
yr5	2007	38	34					1	4	9	19	1																				3.37		
yr3	2004																																	
yr4	2005																																	
yr5	2006	26	23				1	2	2	11	7																				3.48	3.43	0.05	
yr6	2007	26	24					1	4	3	12	4																				3.90		
yr4	2004																																	
yr5	2005																																	
yr6	2006	25	25					1		6	17	1																				3.91	3.93	-0.02
yr5	2004																																	
yr6	2005																																	
yr6	2004																																	

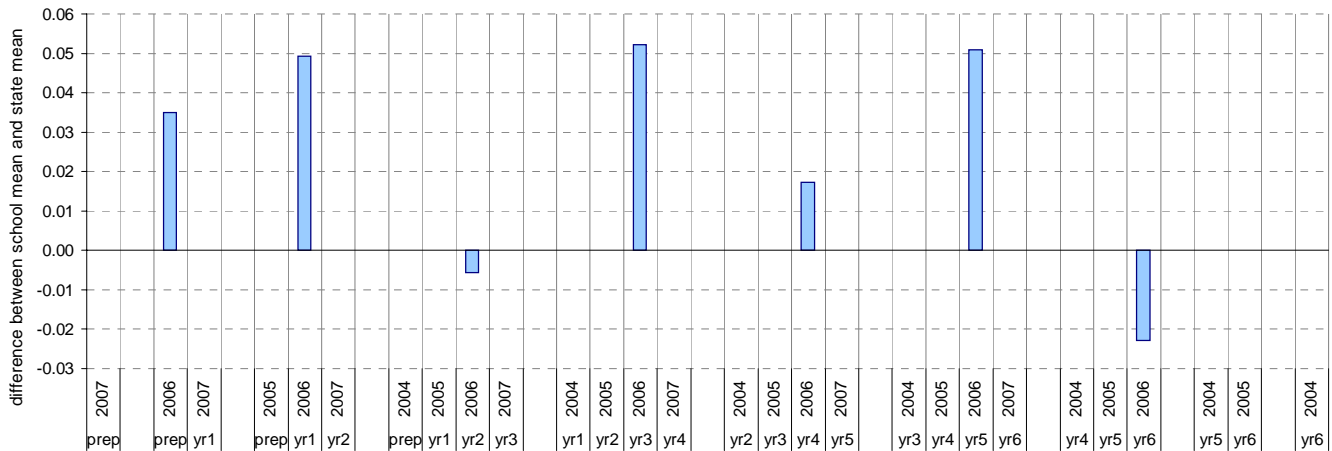
shading indicates a 'C' grade (at the expected standard) on the VELS scale.

<sup>1</sup> Students in group

<sup>2</sup> Total assessed

\* Note: In 2006, approx. 850 schools assessed their students against the 0.25 VELS scale. 2006 benchmarks are therefore based on a subset of schools. 2007 benchmarks will be calculated in August, when data from all schools has been submitted.

### Difference between school mean and state mean\*, by cohort group





# Teacher Judgments against the VELS - Mathematics (primary)

School no: 2897  
 School name: Carnegie Primary School  
 Source of data: Data retrieved electronically from CASES21.  
 Explanation: Teacher judgments of student progress against the VELS.

## Measurement, Chance and Data

Year Level	Year	Total <sup>1</sup>	Assessed <sup>2</sup>	Level 1			Level 2				Level 3				Level 4				Level 5				Level 6				Level 6E			School mean	State mean*	Difference between school and state mean*								
				0.00	0.50	1.00	1.25	1.50	1.75	2.00	2.25	2.50	2.75	3.00	3.25	3.50	3.75	4.00	4.25	4.50	4.75	5.00	5.25	5.50	5.75	6.00	6.25	6.50	6.75											
prep	2007	56	56	4	35	17																											1.04							
prep	2006	42	42	4	24	14																												1.04	0.97	0.06				
yr1	2007	48	47	1	7	35	3	1																										1.47						
prep	2005																																							
yr1	2006	46	46			3	34	9																											1.53	1.48	0.05			
yr2	2007	46	46				1	2	39	3		1																							2.02					
prep	2004																																							
yr1	2005																																							
yr2	2006	34	34				1	3	26	4																										1.99	1.97	0.02		
yr3	2007	29	29						1	4	13	11																								2.54				
yr1	2004																																							
yr2	2005																																							
yr3	2006	25	25					2	5	10	5	3																									2.52	2.45	0.07	
yr4	2007	27	27							4	7	10	4	2																							2.94			
yr2	2004																																							
yr3	2005																																							
yr4	2006	37	37					1	1	4	8	22	1																								2.85	2.94	-0.09	
yr5	2007	38	36						1	1	3	6	21	4																							3.39			
yr3	2004																																							
yr4	2005																																							
yr5	2006	26	25							1	1	2	16	5																							3.48	3.42	0.06	
yr6	2007	26	26									1	1	5	14	5																					3.95			
yr4	2004																																							
yr5	2005																																							
yr6	2006	25	25									1		1	21	2																						3.97	3.92	0.05
yr5	2004																																							
yr6	2005																																							
yr6	2004																																							

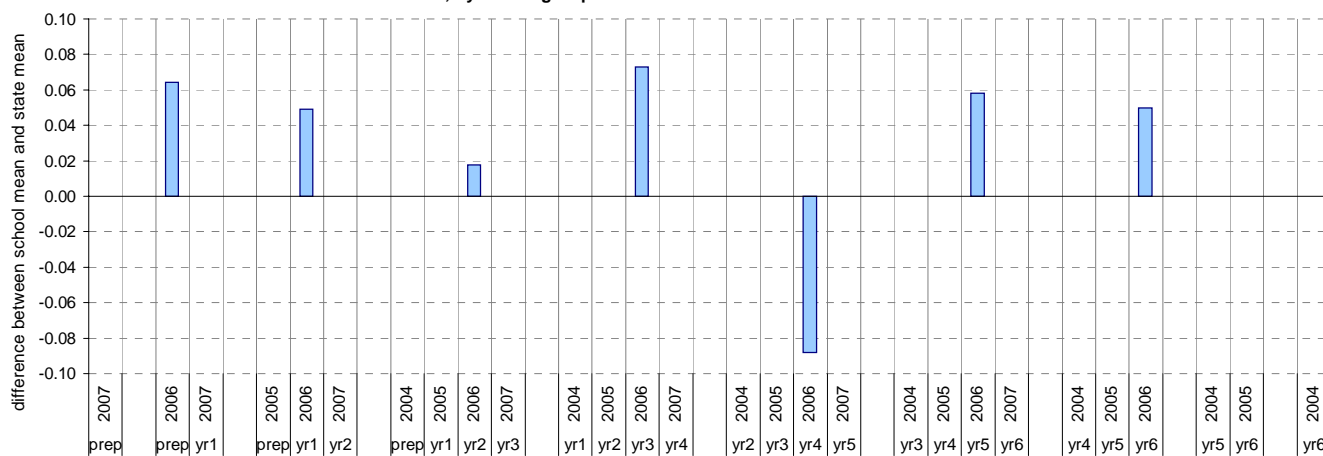
shading indicates a 'C' grade (at the expected standard) on the VELS scale.

<sup>1</sup> Students in group

<sup>2</sup> Total assessed

\* Note: In 2006, approx. 850 schools assessed their students against the 0.25 VELS scale. 2006 benchmarks are therefore based on a subset of schools. 2007 benchmarks will be calculated in August, when data from all schools has been submitted.

Difference between school mean and state mean\*, by cohort group



# AIM Year 3 and 5: Reading

School no: 2897

School name: Carnegie Primary School

Source of data: Victorian Curriculum and Assessment Authority.

Explanation: The Achievement Improvement Monitor (AIM) is a statewide assessment program conducted each year for students in Years 3, 5, 7 and 9. For more detailed AIM data, refer to the AIM Data Service website at <http://aimds.vcaa.vic.edu.au>.

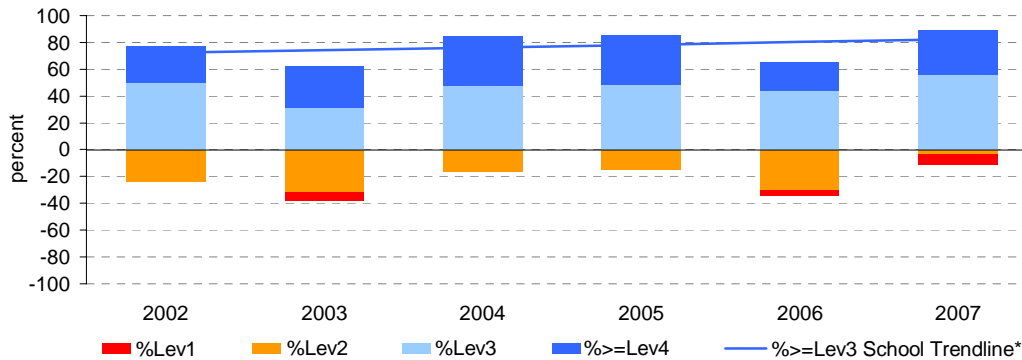
Notes: \* The school trendline is being trialled. It is only plotted when there is data for each calendar year.

\*\* % student participation = (students who participated in AIM / Feb enrolments) \* 100

## Year 3

	student participation		% of students by VELs level							Mean CSF / VELs Score	
	(n)	(%)**	Lev1	Lev2	Lev3	Lev4	Lev5	Lev6	Lev6E	School	State
2002	26	84	0	23	50	27	0	0	0	2.5	2.4
2003	29	91	7	31	31	31	0	0	0	2.3	2.3
2004	19	76	0	16	47	37	0	0	0	2.7	2.3
2005	35	88	0	14	49	37	0	0	0	2.7	2.4
2006	23	92	4	30	43	22	0	0	0	2.3	2.3
2007	27	82	7	4	56	33	0	0	0	2.6	2.3

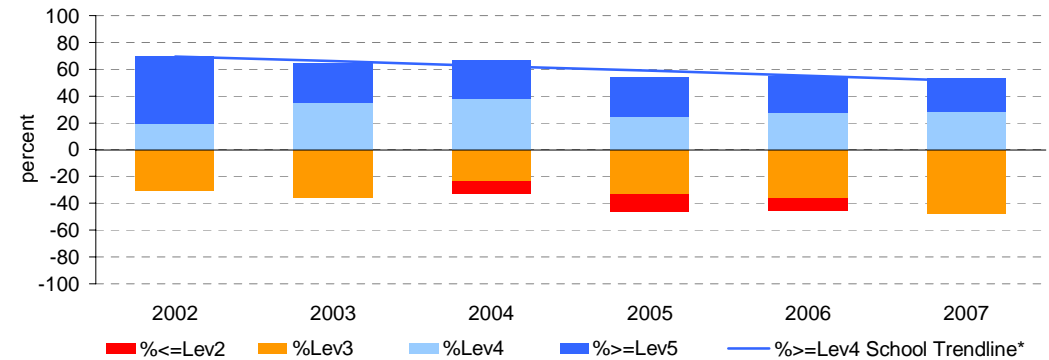
Proportion of students by VELs level



## Year 5

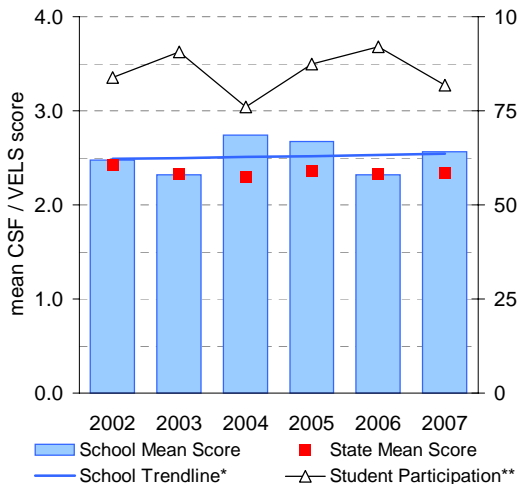
	student participation		% of students by VELs level							Mean CSF / VELs Score	
	(n)	(%)**	Lev1	Lev2	Lev3	Lev4	Lev5	Lev6	Lev6E	School	State
2002	20	74	0	0	30	20	50	0	0	3.6	3.1
2003	17	77	0	0	35	35	29	0	0	3.4	3.2
2004	21	88	0	10	24	38	29	0	0	3.4	3.2
2005	24	89	0	13	33	25	29	0	0	3.2	3.2
2006	22	96	0	9	36	27	27	0	0	3.3	3.1
2007	32	84	0	0	47	28	25	0	0	3.2	3.2

Proportion of students by VELs level

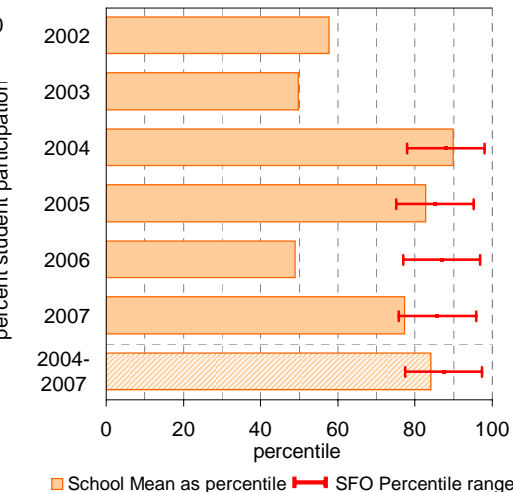


## Year 3

School Mean against State Mean, including Participation

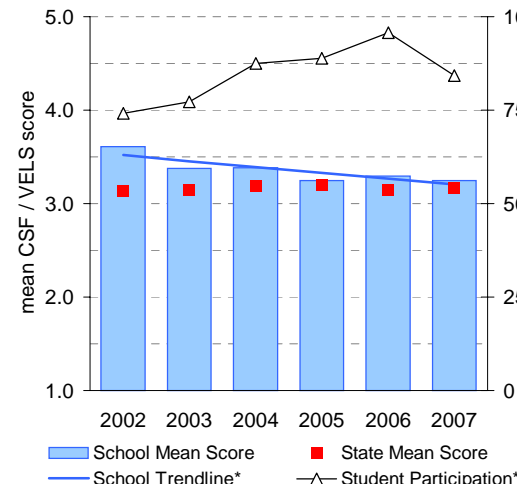


School Mean as percentile against SFO percentile range

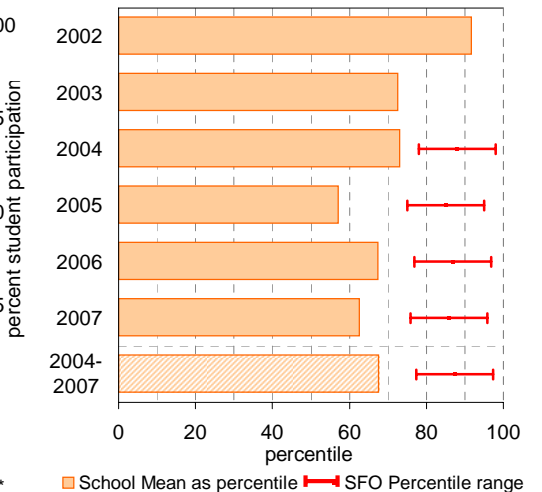


## Year 5

School Mean against State Mean, including Participation



School Mean as percentile against SFO percentile range



# AIM Year 3 and 5: Number

School no: 2897

School name: Carnegie Primary School

Source of data: Victorian Curriculum and Assessment Authority.

Explanation: The Achievement Improvement Monitor (AIM) is a statewide assessment program conducted each year for students in Years 3, 5, 7 and 9. For more detailed AIM data, refer to the AIM Data Service website at <http://aimds.vcaa.vic.edu.au>.

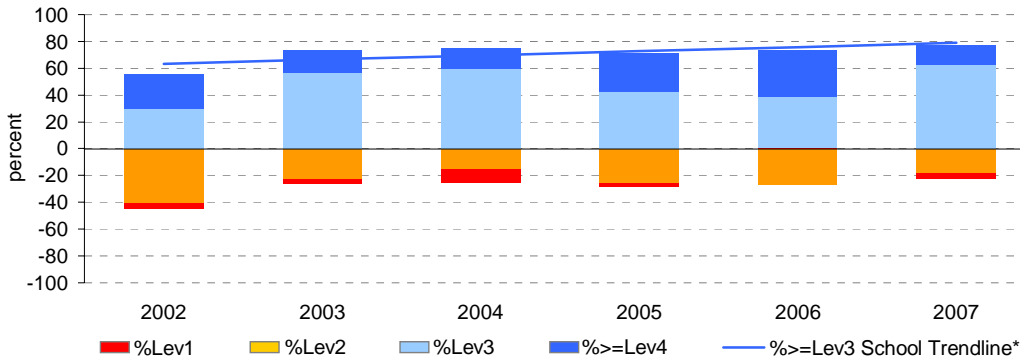
Notes: \* The school trendline is being trialled. It is only plotted when there is data for each calendar year.

\*\* % student participation = (students who participated in AIM / Feb enrolments) \* 100

## Year 3

	student participation		% of students by VELs level							Mean CSF / VELs Score	
	(n)	(%)**	Lev1	Lev2	Lev3	Lev4	Lev5	Lev6	Lev6E	School	State
2002	27	87	4	41	30	26	0	0	0	2.4	2.4
2003	30	94	3	23	57	17	0	0	0	2.2	2.4
2004	20	80	10	15	60	15	0	0	0	2.4	2.4
2005	35	88	3	26	43	29	0	0	0	2.4	2.4
2006	23	92	0	26	39	35	0	0	0	2.5	2.4
2007	27	82	4	19	63	15	0	0	0	2.3	2.4

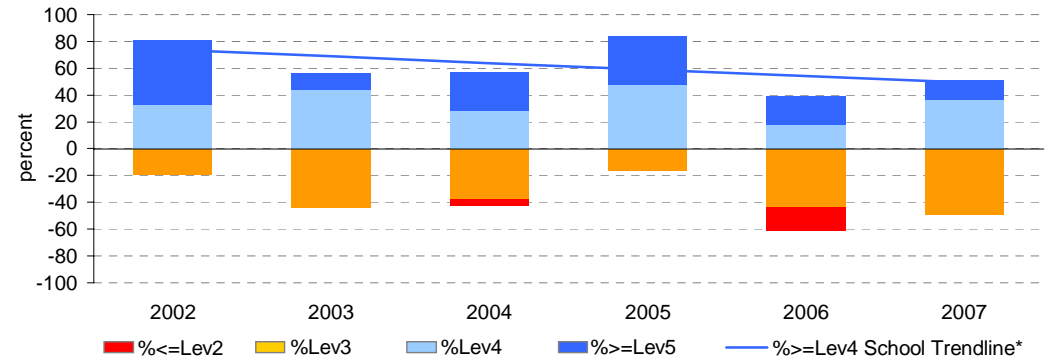
Proportion of students by VELs level



## Year 5

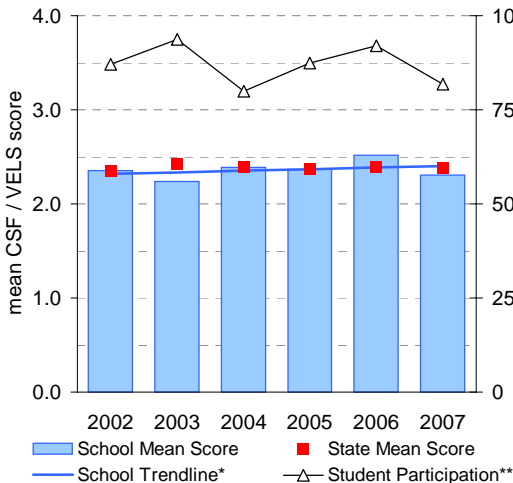
	student participation		% of students by VELs level							Mean CSF / VELs Score	
	(n)	(%)**	Lev1	Lev2	Lev3	Lev4	Lev5	Lev6	Lev6E	School	State
2002	21	78	0	0	19	33	48	0	0	3.6	3.3
2003	16	73	0	0	44	44	13	0	0	3.1	3.1
2004	21	88	0	5	38	29	29	0	0	3.3	3.2
2005	25	93	0	0	16	48	36	0	0	3.6	3.2
2006	23	100	0	17	43	17	22	0	0	3.1	3.2
2007	33	87	0	0	48	36	15	0	0	3.1	3.2

Proportion of students by VELs level

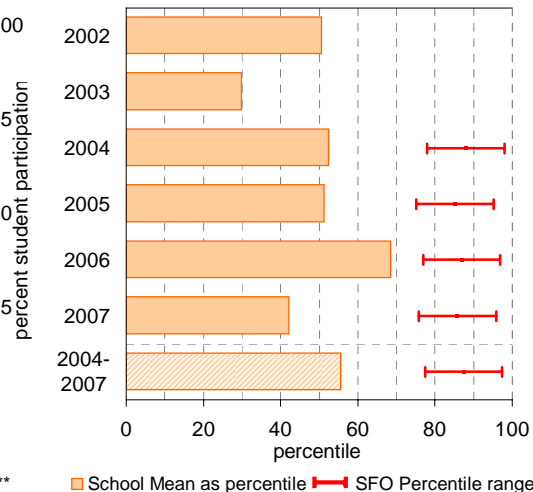


## Year 3

School Mean against State Mean, including Participation

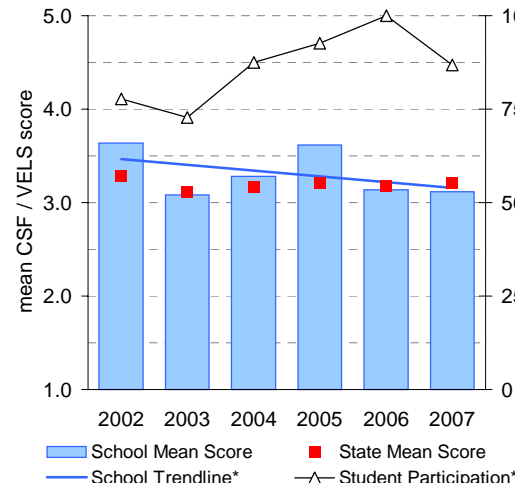


School Mean as percentile against SFO percentile range

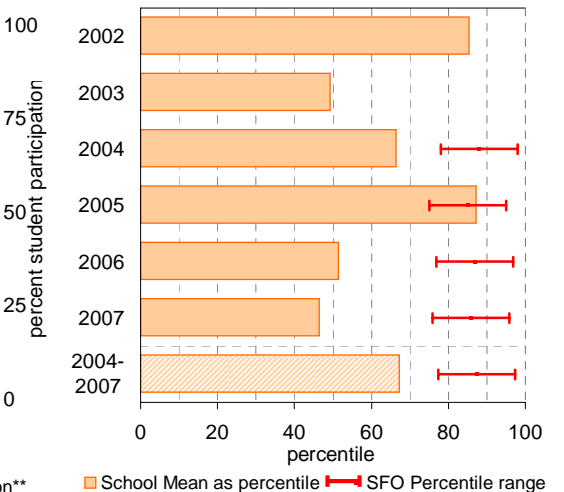


## Year 5

School Mean against State Mean, including Participation



School Mean as percentile against SFO percentile range



# Teacher Assessment of Student Progress (PSD students)

**School no:** 2897

**School name:** Carnegie Primary School

**Explanation:** Teachers assess their students' progress against the 8 VELs Domains / CSF KLAs using a 6-point scale (students in special schools and those who cannot be assessed against the VELs / CSF).

**Source of data:** Data transmitted from school to DEECD via an online web-form.

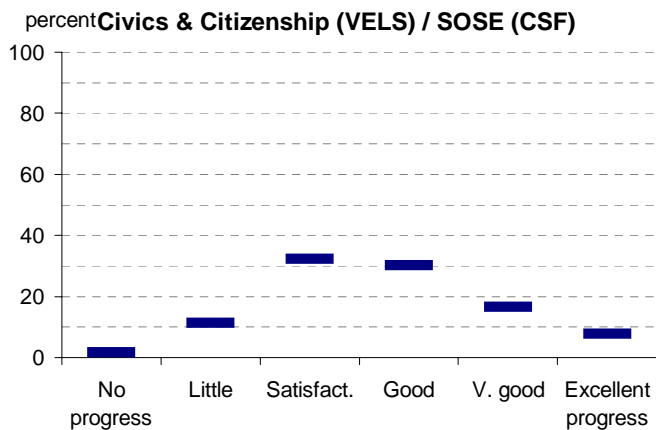
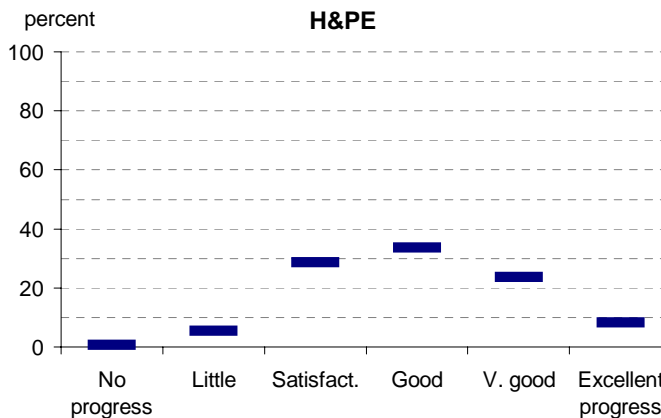
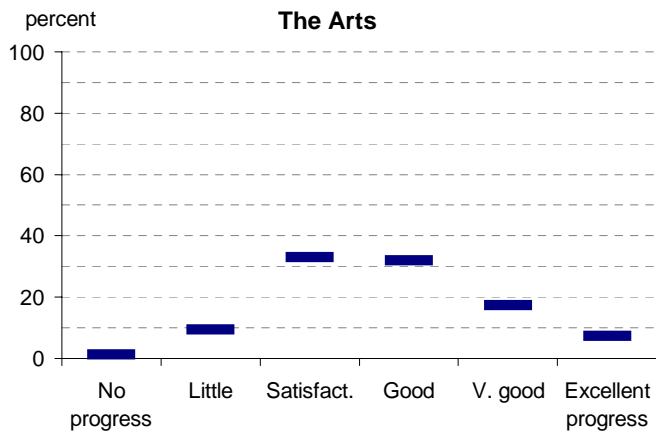
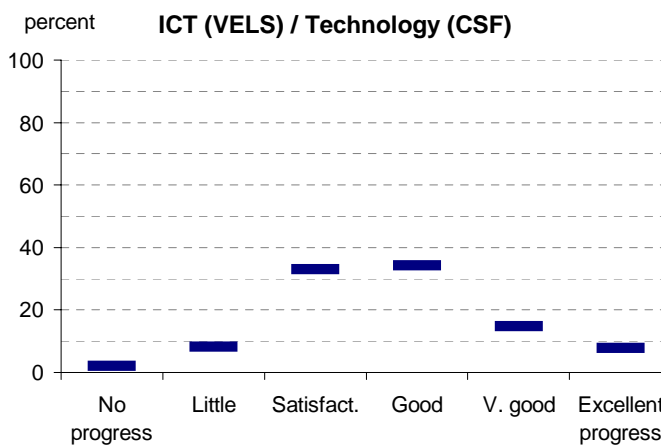
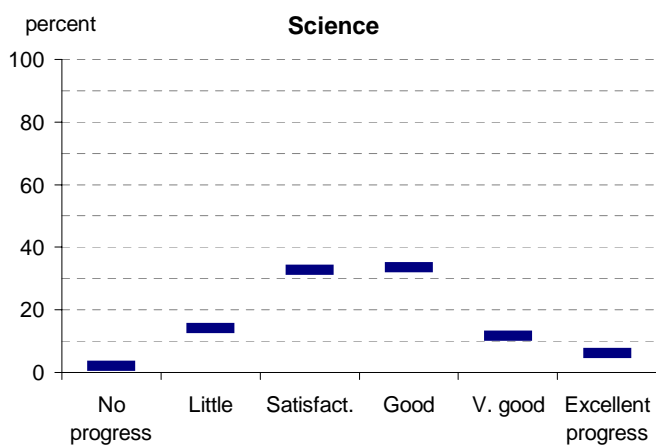
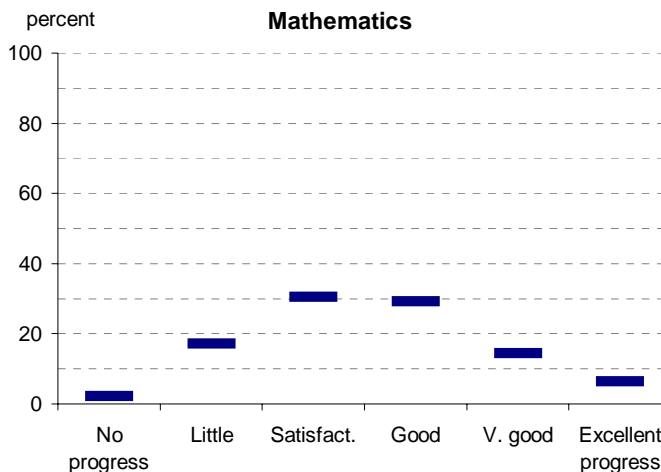
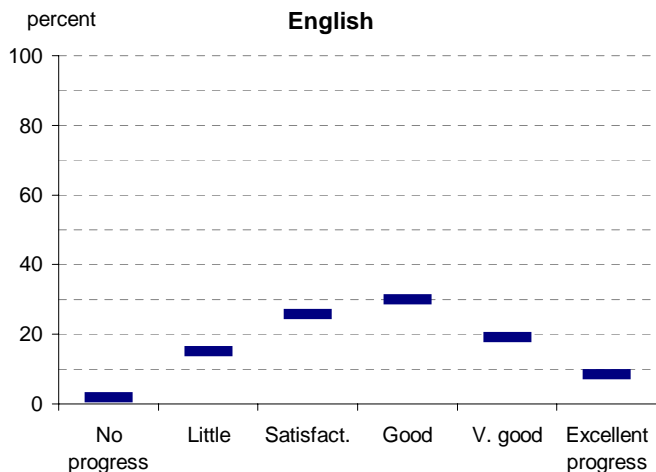
	No progress (%)	Little progress (%)	Satisfactory progress (%)	Good progress (%)	Very good progress (%)	Excellent progress (%)	Total students assessed <sup>1</sup> (no.)
<b>2003 (by CSF KLA)</b>							
English							
Mathematics							
Science							
Technology							
The Arts							
H&PE							
SOSE							
<b>2004 (by CSF KLA)</b>							
English							
Mathematics							
Science							
Technology							
The Arts							
H&PE							
SOSE							
<b>2005 (by CSF KLA)</b>							
English							
Mathematics							
Science							
Technology							
The Arts							
H&PE							
SOSE							
<b>2006 (by VELs Domain)</b>							
English							
Mathematics							
Science							
Technology							
The Arts							
H&PE							
SOSE							
<b>2007 (by VELs Domain)</b>							
English							
Mathematics							
Science							
ICT							
The Arts							
H&PE							
Civics & Citizenship							
<b>2006 Primary state benchmarks (by VELs Domain)*</b>							
English	2	15	26	30	19	8	
Mathematics	2	17	30	29	14	6	
Science	2	14	33	33	12	6	
Technology	2	8	33	34	15	8	
The Arts	1	9	33	32	17	7	
H&PE	1	5	29	34	24	8	
SOSE	2	11	32	30	17	8	

Notes: <sup>1</sup> If schools provided percentages only, it is not possible to report the number of students assessed. In these cases, the total percentage (100) will be shown.

\* 2007 benchmarks will be calculated in August, when data from all schools has been submitted.

# Teacher Assessment of Student Progress (PSD students)

School no: 2897  
 School name: Carnegie Primary School



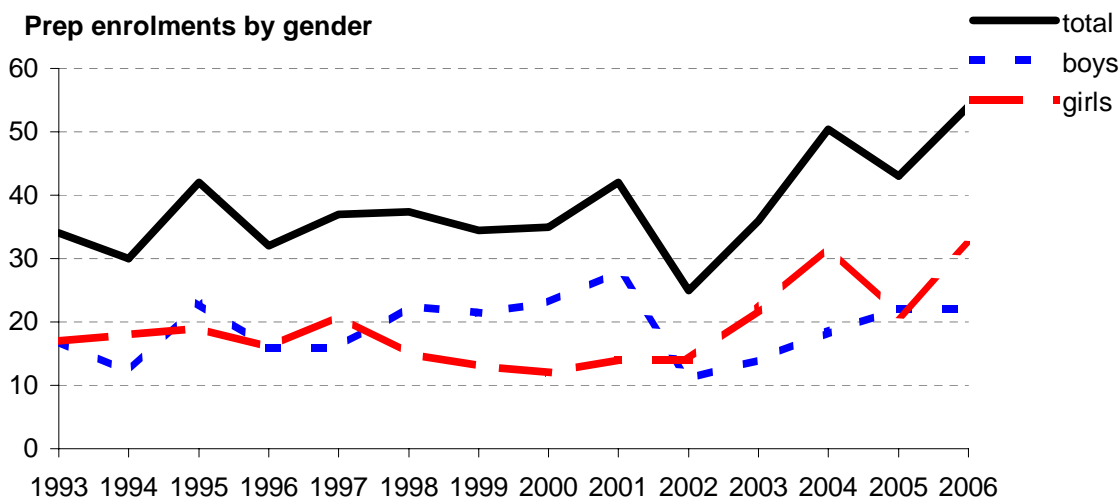
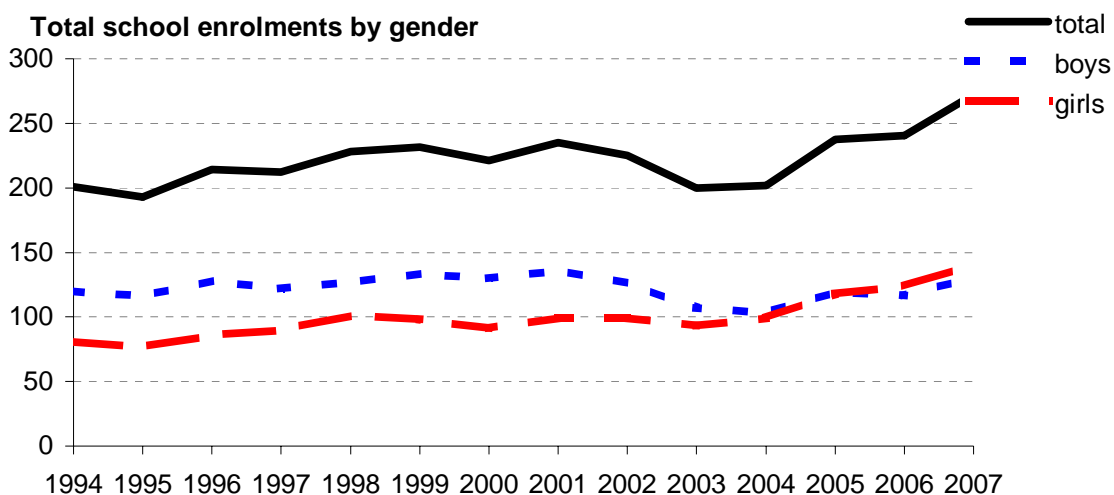
- 2003 (by CSF KLA)
- 2004 (by CSF KLA)
- 2005 (by CSF KLA)
- 2006 (by VELS Domain)
- 2007 (by VELS Domain)
- 2006 Primary state benchmarks (by VELS Domain)\*

Notes: \* 2007 benchmarks will be calculated in August, when data from all schools has been submitted.

# Enrolments

**School no:** 2897  
**School name:** Carnegie Primary School  
**Explanation:** Enrolments at February census.  
**Source of data:** February census.

Year	Total school enrolment			Prep enrolment			Year 7 enrolments		
	boys	girls	total	boys	girls	total	boys	girls	total
1994	120	81	201	17	17	34			
1995	116	77	193	12	18	30			
1996	128	86	214	23	19	42			
1997	122	90	212	16	16	32			
1998	127	101	228	16	21	37			
1999	133	98	231	22	15	37			
2000	130	91	221	21	13	34			
2001	136	99	235	23	12	35			
2002	126	99	225	28	14	42			
2003	107	93	200	11	14	25			
2004	103	99	202	14	22	36			
2005	119	118	237	18	32	50			
2006	116	124	240	22	21	43			
2007	131	141	272	22	32	54			



# Student Absence

School no: 2897

School name: Carnegie Primary School

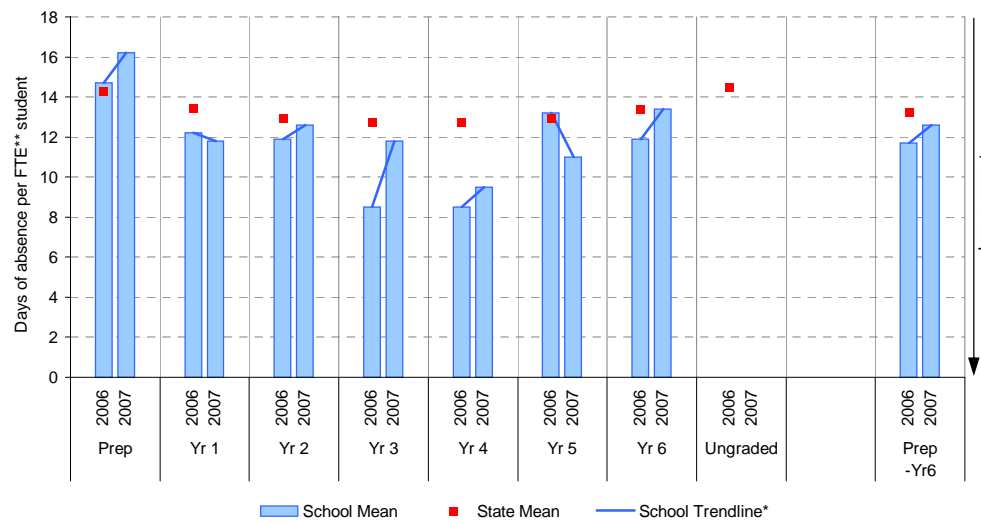
Source of data: Data retrieved electronically from CASES21.

**Explanation:** The average (mean) number of absent days† per student. Up to 2006, the formula used to calculate the average number of absent days per student was based on student headcount. From 2006, the formula was based on FTE\*\* students. The new formula provides a more accurate summary of student absence. For 2006, student absence is provided for both student headcount and FTE student. Note that 20 absent days equates to 1 absent day per fortnight, and 10 absent days to 1 absent day per month.

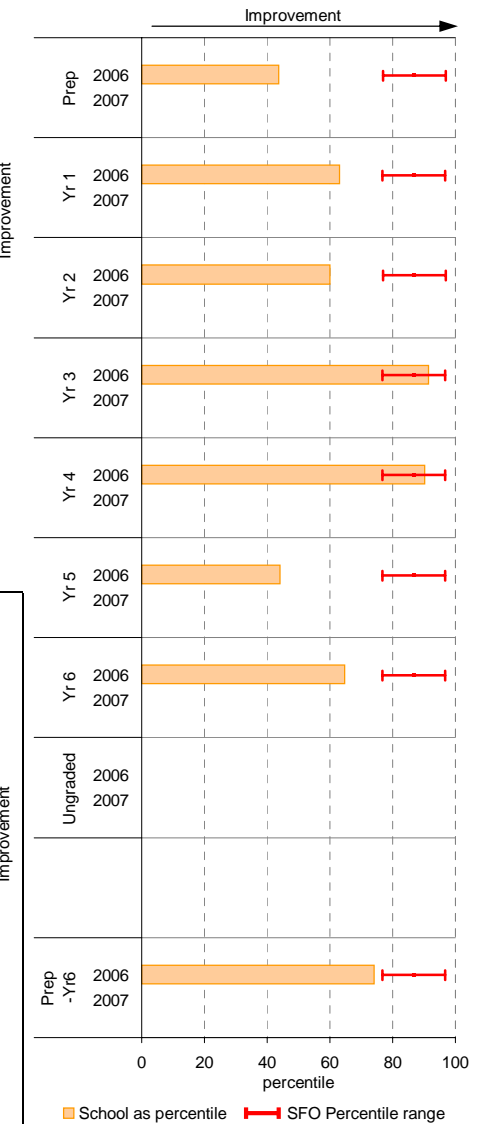
## Student Absence (by FTE\*\* student, 2006 and onward)

	School		2006 state benchmark^				
	2006	2007	25th ptile	Mean	75th ptile		
	Enrolments	Avg absent days / FTE** student	Enrolments	Avg absent days / FTE** student			
Prep	43.9	14.7	55.3	16.2	11.6	14.3	17.1
Yr 1	47.2	12.2	47.1	11.8	11.3	13.4	15.6
Yr 2	34.2	11.9	47.0	12.6	10.7	13.0	15.1
Yr 3	25.6	8.5	30.7	11.8	10.7	12.7	14.8
Yr 4	37.9	8.5	27.4	9.5	10.6	12.7	14.7
Yr 5	25.6	13.2	37.3	11	10.8	12.9	15.2
Yr 6	25.6	11.9	26.8	13.4	11.0	13.4	15.8
Ungraded						14.5	
P-6 mean		11.7		12.6		13.2	

School Mean against State Mean^



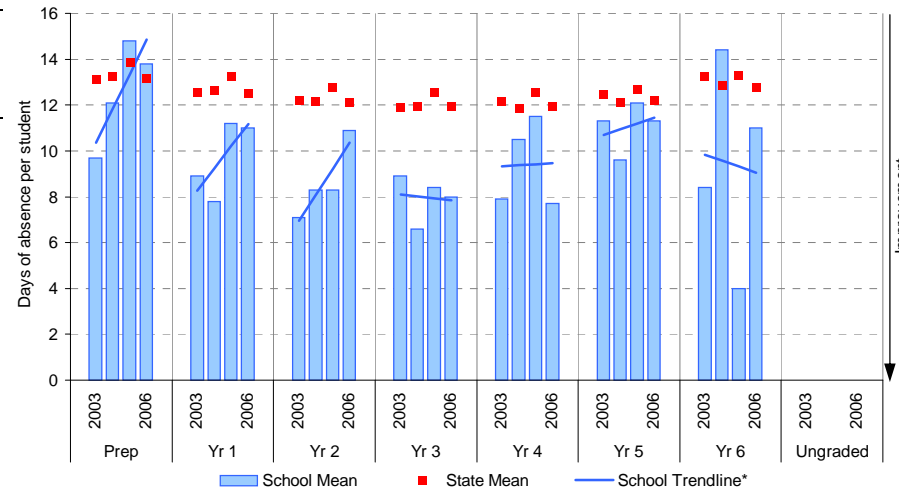
School Mean as percentile against SFO percentile range^



## Student Absence (by student headcount, 2003-2006)

	School			
	2003	2004	2005	2006
	Enrolments	Avg absent days / student	Enrolments	Avg absent days / student
Prep	28	9.7	43	12.1
Yr 1	37	8.9	33	7.8
Yr 2	24	7.1	45	8.3
Yr 3	35	8.9	30	6.6
Yr 4	27	7.9	34	10.5
Yr 5	21	11.3	28	9.6
Yr 6	30	8.4	21	14.4
Ungraded				
P-6 mean		8.9		9.7

School Mean against State Mean



Notes: † Includes non-curriculum absences only (absence codes 200, 201, 202, 203, 205, 206, 207, 208, 209, 210, 211, 300, 401, 500, 700, 800, 804, 805, 900).

\* The school trendline is being trialled. It is only plotted when there is data for each calendar year.  
 \*\* FTE = Full Time Equivalent (including part-time and part-year fractions).

^ 2007 benchmarks will be calculated in August, when data from all schools has been submitted.

# Parent Opinion

School no: 2897

School name: Carnegie Primary School

Explanation: A self-completion questionnaire to obtain parents' opinions of the school. Parents rated a number of statements using a scale where 1=strongly disagree & 7=strongly agree. The statements were grouped into the following categories.

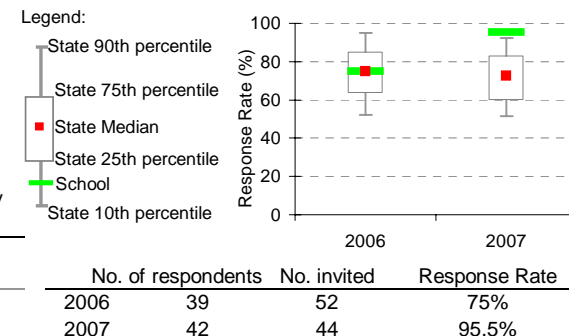
Source of data: Data scanned from questionnaires completed by parents.

Variable No.	Name	Year	School mean	State Primary median
1	School Improvement	2006	5.85	5.71
		2007	5.78	5.75
2	Approachability	2006	6.05	5.81
		2007	5.90	5.82
3	Teacher Morale	2006	6.06	5.82
		2007	5.97	5.86
4	Parent Input	2006	5.76	5.59
		2007	5.51	5.62
5	Stimulating Learning	2006	5.99	5.81
		2007	5.92	5.84
6	Behaviour Management	2006	5.91	5.51
		2007	5.75	5.54
7	Reporting	2006	5.04	5.45
		2007	5.62	5.51

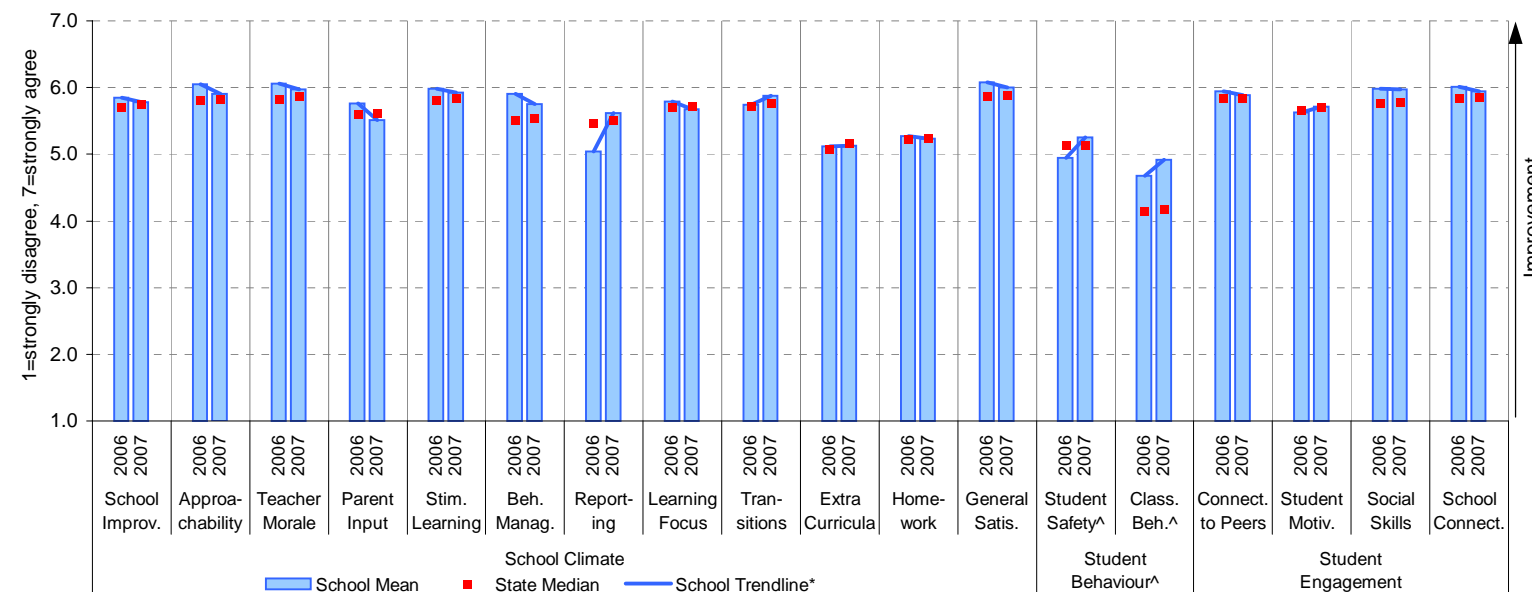
Variable No.	Name	Year	School mean	State Primary median
8	Learning Focus	2006	5.79	5.71
		2007	5.68	5.72
9	Transitions	2006	5.74	5.72
		2007	5.88	5.76
10	Extra Curricula	2006	5.12	5.07
		2007	5.13	5.17
11	Homework	2006	5.27	5.23
		2007	5.24	5.23
12	General Satisfaction	2006	6.08	5.87
		2007	6.00	5.88
13	Student Safety^	2006	4.95	5.13
		2007	5.26	5.12
14	Classroom Behaviour^	2006	4.68	4.15
		2007	4.92	4.18

Variable No.	Name	Year	School mean	State Primary median
15	Connectedness to Peers	2006	5.95	5.83
		2007	5.89	5.83
16	Student Motivation	2006	5.63	5.66
		2007	5.71	5.69
17	Social Skills	2006	5.98	5.76
		2007	5.97	5.78
18	School Connectedness	2006	6.01	5.83
		2007	5.94	5.85

## School response rate\*\* against Primary school distribution



## School Mean against Primary State Mean



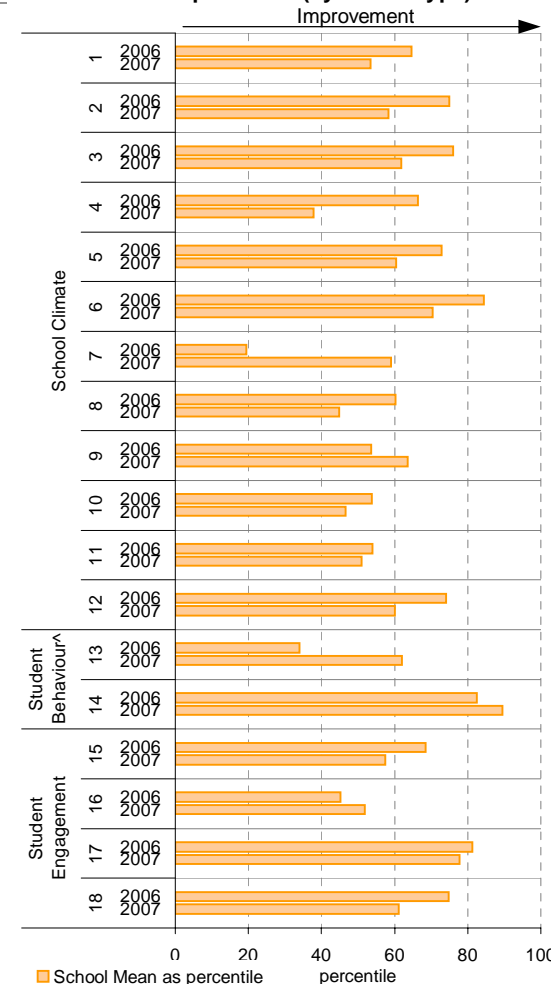
Notes: \* The school trendline is being trialled. It is only plotted when there is data for each calendar year.

\*\* If there were 6 or less respondents, table data is not shown for confidentiality reasons. If there were 3 or less respondents, graph data is not shown for confidentiality reasons.

^ Parents' responses to all negatively phrased questions have been reversed for reporting purposes. Across all variables, the higher the score or percentile rank, the more positive parents' perceptions.

^^ Benchmarks available for Primary, Secondary, Pri/Sec, Special and SDS schools.

## School Mean as percentile (by school type)



## Parent Opinion (pre-2006)

School no: 2897

School name: Carnegie Primary School

Explanation: A self-completion questionnaire to obtain parents' opinions of the school. Parents rated a number of statements using a scale where 1=strongly disagree & 6=strongly agree. The statements were grouped into the following categories.

Source of data: From 2004, data scanned from questionnaires completed by parents.

Year	Number of respondents
2004	121
2005	39

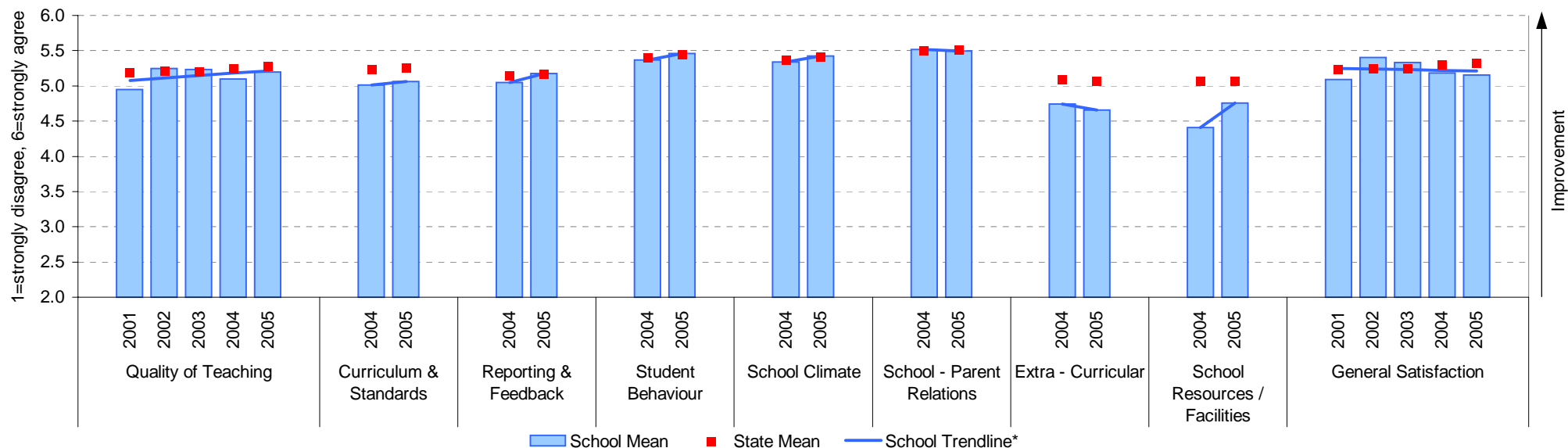
Variable	Year	School Mean	Primary State Mean
Quality of Teaching	2001	4.95	5.18
	2002	5.25	5.21
	2003	5.23	5.20
	2004	5.10	5.24
	2005	5.20	5.28
Curriculum and Standards	2004	5.01	5.23
	2005	5.07	5.25

Variable	Year	School Mean	Primary State Mean
Reporting and Feedback	2004	5.05	5.15
	2005	5.18	5.16
Student Behaviour	2004	5.37	5.40
	2005	5.46	5.44
School Climate	2004	5.34	5.37
	2005	5.42	5.41

Variable	Year	School Mean	Primary State Mean
School / Parent Relations	2004	5.52	5.50
	2005	5.50	5.51
Extra-Curricular	2004	4.74	5.08
	2005	4.66	5.07
School Resources / Facilities	2004	4.41	5.07
	2005	4.76	5.06

Variable	Year	School Mean	Primary State Mean
General Satisfaction	2001	5.09	5.23
	2002	5.40	5.25
	2003	5.33	5.25
	2004	5.18	5.30
	2005	5.15	5.33

### School Mean against Primary State Mean



Notes: \* The school trendline is being trialled. It is only plotted when there is data for each calendar year.

^^ State Means available for Primary, Secondary, Pri/Sec, Special and SDS schools.

# Staff Opinion

School no: 2897

School name: Carnegie Primary School

Explanation: A self-completion questionnaire to obtain the staff's opinions of the school. The survey was administered online using the School Organisational Health Questionnaire.

Source of data: Data transmitted from school staff to DEECD via an online survey application.

Variable	No.	Name	Year	School mean	State Primary median
1 Individual Morale			2005	82.5	75.5
			2006	80.0	75.6
			2007	82.6	76.8
2 School Morale			2005	88.2	77.6
			2006	89.4	78.1
			2007	90.5	79.2
3 Supportive Leadership			2005	88.9	80.0
			2006	90.3	80.0
			2007	90.5	80.6
4 Role Clarity			2005	80.9	79.2
			2006	86.5	79.6
			2007	86.8	80.1
5 Professional Interaction			2005	87.2	80.5
			2006	88.7	80.7
			2007	89.8	81.9
6 Participative Decision-Making			2005	83.9	74.8
			2006	85.1	75.1
			2007	85.9	76.3
7 Goal Congruence			2005	87.1	81.4
			2006	86.9	81.7
			2007	88.7	82.6

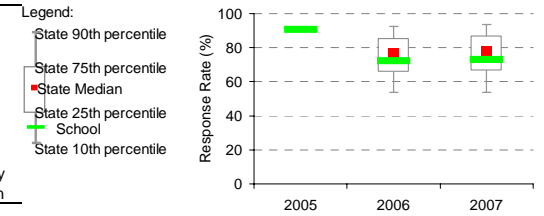
  

Variable	No.	Name	Year	School mean	State Primary median
8 Appraisal & Recognition			2005	74.6	70.5
			2006	79.6	71.6
			2007	79.4	73.1
9 Professional Growth			2005	69.5	73.8
			2006	78.1	74.2
			2007	85.5	76.0
10 Curriculum Coordination			2005	79.9	74.6
			2006	83.9	75.0
			2007	81.3	75.6
11 Effective Discipline Policy			2005	79.0	79.7
			2006	92.4	79.9
			2007	91.4	80.9
12 Student Orientation			2005	93.4	85.9
			2006	95.2	86.1
			2007	93.2	86.6
13 Student Motivation			2005	85.0	75.9
			2006	87.9	76.8
			2007	86.9	77.9
14 Student Decision-Making			2005	80.0	68.4
			2006	82.1	69.4
			2007	81.9	71.3

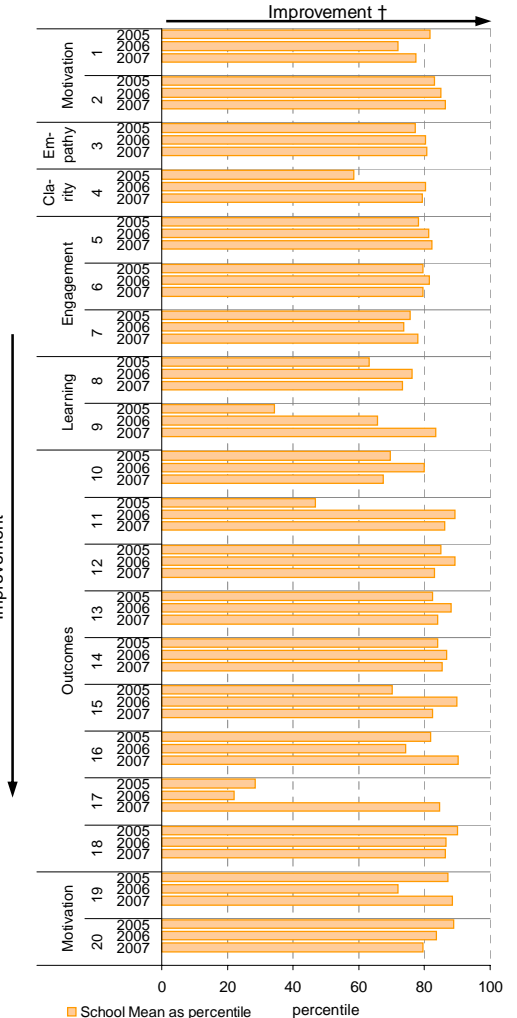
Variable	No.	Name	Year	School mean	State Primary median
15 Learning Environment			2005	84.8	80.3
			2006	92.0	81.3
			2007	90.2	82.5
16 Student Misbehaviour			2005	11.9	22.9
			2006	13.7	21.7
			2007	8.3	21.5
17 Classroom Misbehaviour			2005	18.9	14.6
			2006	20.0	13.8
			2007	8.3	13.3
18 Excessive Work Demands			2005	24.3	42.8
			2006	26.4	42.9
			2007	26.6	43.2
19 Individual Distress			2005	11.9	22.2
			2006	17.2	21.6
			2007	10.2	21.1
20 School Distress			2005	12.6	29.2
			2006	15.8	28.8
			2007	17.1	28.3

School response rate\*\* against Primary school distribution

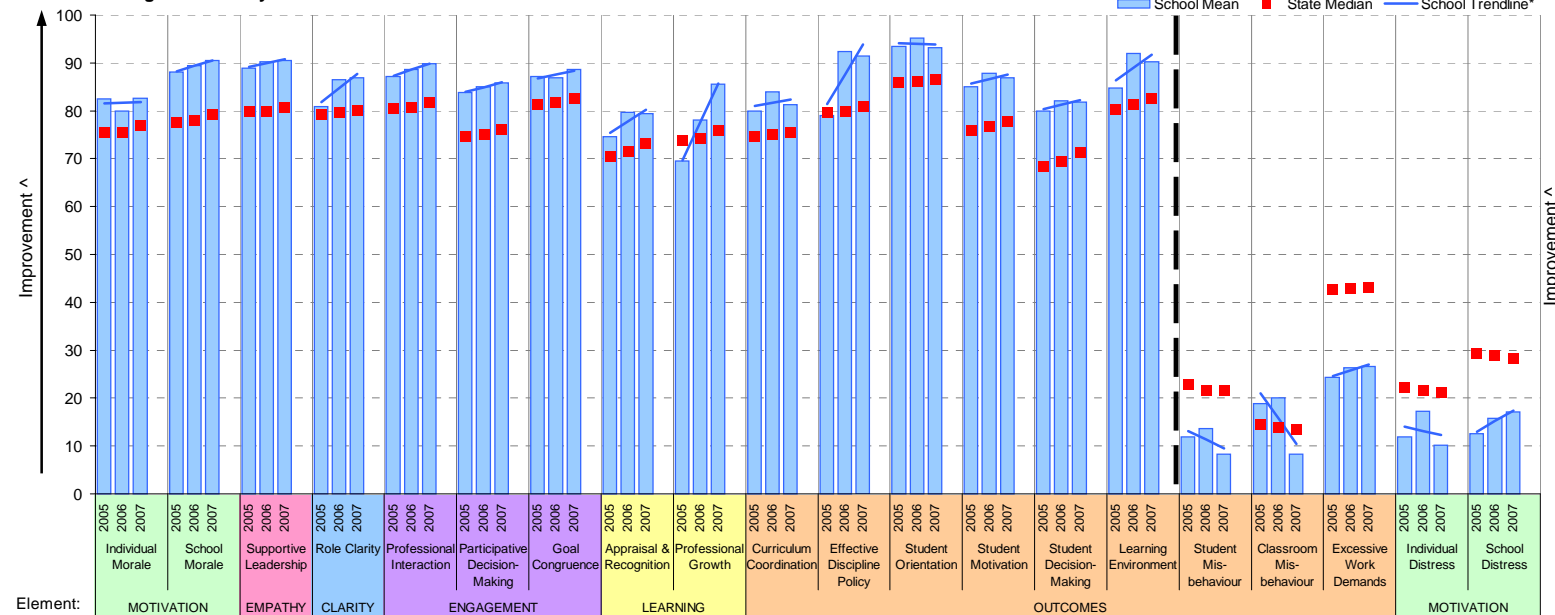


Year	No. of respondents	No. invited	Response Rate
2005	19	21	90%
2006	18	25	72%
2007	19	26	73%

School Mean as percentile (by school type)



School Mean against Primary State Mean



Notes: \* The school trendline is being trialled. It is only plotted when there is data for each calendar year.

\*\* If there were 6 or less respondents, table data is not shown for confidentiality reasons. If there were 3 or less respondents, graph data is not shown for confidentiality reasons.

^ The higher the school mean, the more positive the outcome for variables 1 to 15. The lower the school mean, the more positive the outcome for variables 16 to 20.

† The higher the school percentile, the more positive the outcome for all variables.

^^ Benchmarks are available for Primary, Secondary, Pri/Sec, Special & SDS schools.

# Staff Sick Leave

**School no:** 2897

**School name:** Carnegie Primary School

**Explanation:** The number of non-certificated and total sick leave days taken per staff member. A detailed explanation on how staff sick leave is calculated is provided in the Annual Reports Frequently Asked Questions page of the Standards website (<http://www.sofweb.vic.edu.au/standards/account/arepq.htm>).

**Source of data:** Human Resources Management System (HRMS)^.

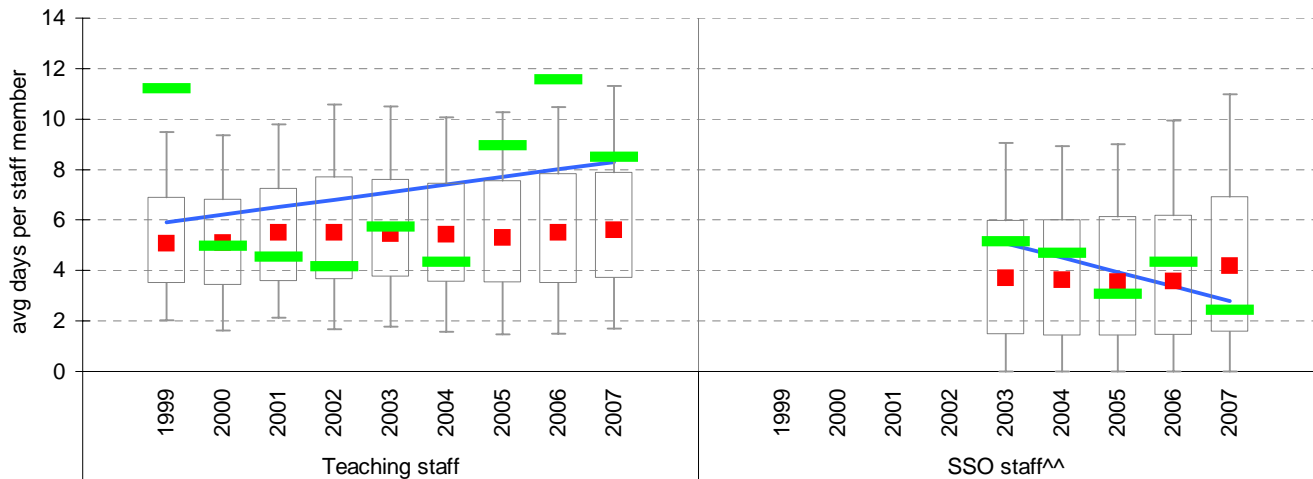
Staff Type	Non-Certificated sick leave days per staff member^									2007 State Median
	1999	2000	2001	2002	2003	2004	2005	2006	2007	
Teacher	1.36	1.57	1.45	1.95	1.86	1.86	2.40	1.36	1.74	1.53
SSO^^					2.26	3.27	2.01	1.03	1.65	1.19

Staff Type	Total sick leave days per staff member^									2007 State Median
	1999	2000	2001	2002	2003	2004	2005	2006	2007	
Teacher	11.20	4.96	4.55	4.16	5.72	4.33	8.96	11.57	8.49	5.61
SSO^^					5.14	4.69	3.07	4.35	2.45	4.20

## NON-CERTIFICATED sick leave



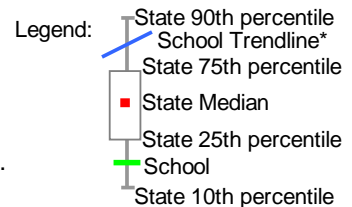
## TOTAL sick leave



Note: \* The school trendline is being trialled. It is only plotted when there is data for each calendar year.

^ There may be some discrepancy between the results from CASES & those from HRMS. The latter are considered to be more accurate.

^^ Data for SSO (School Services Officer) staff is only available from 2003.



## Teaching Staff Retention

**School no:** 2897

**School name:** Carnegie Primary School

**Explanation:** The retention rate of teaching staff is determined by matching staff payroll records for the last pay in June of one year (Year A), to the last pay in June of the following year (Year B).

**Source of data:** Human Resources Management System (HRMS).

### Teaching Staff\*

Year A	Year B	Number of Teaching Staff in Year A	Number of Teaching Staff retained in Year B	Teaching Staff Retention Rate	Statewide Average
2005	2006	17	15	88%	87%
2006	2007	21	18	86%	86%

Of the 17 teaching service staff at June 2005 (including those on leave without pay), 15 or 88% were still at the school at June 2006. This figure across all Government schools was 87%.

Of the 21 teaching service staff at June 2006 (including those on leave without pay), 18 or 86% were still at the school at June 2007. This figure across all Government schools was 86%.

### Ongoing Teaching Staff\*^

Year A	Year B	Number of Ongoing Teaching Staff in Year A	Number of Ongoing Teaching Staff retained in Year B	Ongoing Teaching Staff Retention Rate	Statewide Average
2005	2006	13	12	92%	91%
2006	2007	16	14	88%	90%

Of the 13 ongoing teaching service staff at June 2005 (including those on leave without pay), 12 or 92% were still at the school at June 2006. This figure across all Government schools was 91%.

Of the 16 ongoing teaching service staff at June 2006 (including those on leave without pay), 14 or 88% were still at the school at June 2007. This figure across all Government schools was 90%.

Notes: \* Teaching staff includes Principal class, Teacher class and Instructor class. Teaching staff employed as visiting teachers, guidance officers, curriculum consultants, etc. are excluded as they are not charged to a particular school.

^ Not including fixed term staff, except for where staff had changed from ongoing in Year A to fixed term in Year B.

# Bank Balances

**School no:** 2897

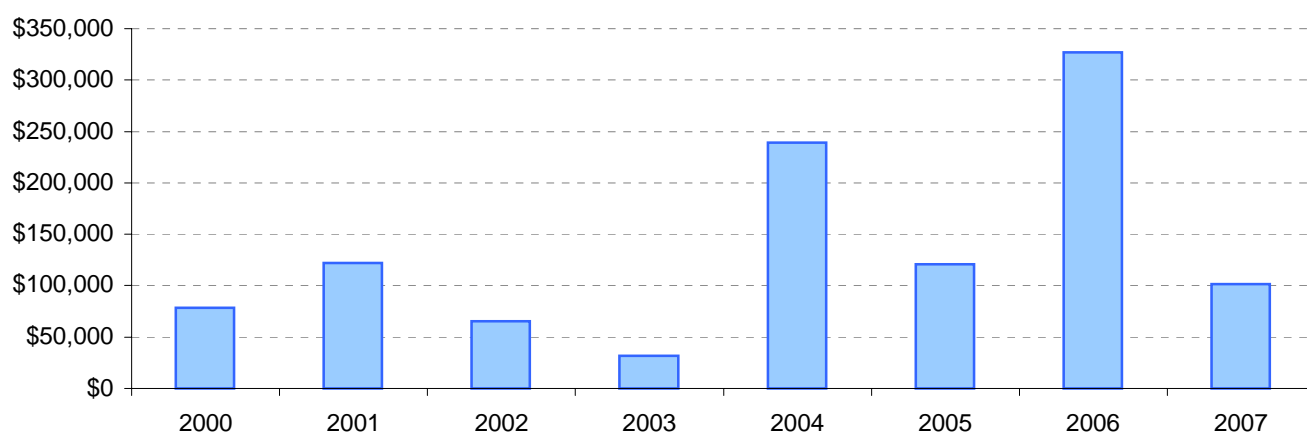
**School name:** Carnegie Primary School

**Explanation:** Account balance figures include official and investment accounts, and are calculated by taking the opening balance at 1st January plus the total receipts at 31st December less total payments at 31st December.

## Account Balances (Official plus Investment Accounts)

2000	\$78,418	2004	\$239,375
2001	\$122,086	2005	\$120,705
2002	\$65,676	2006	\$327,110
2003	\$31,779	2007	\$101,741

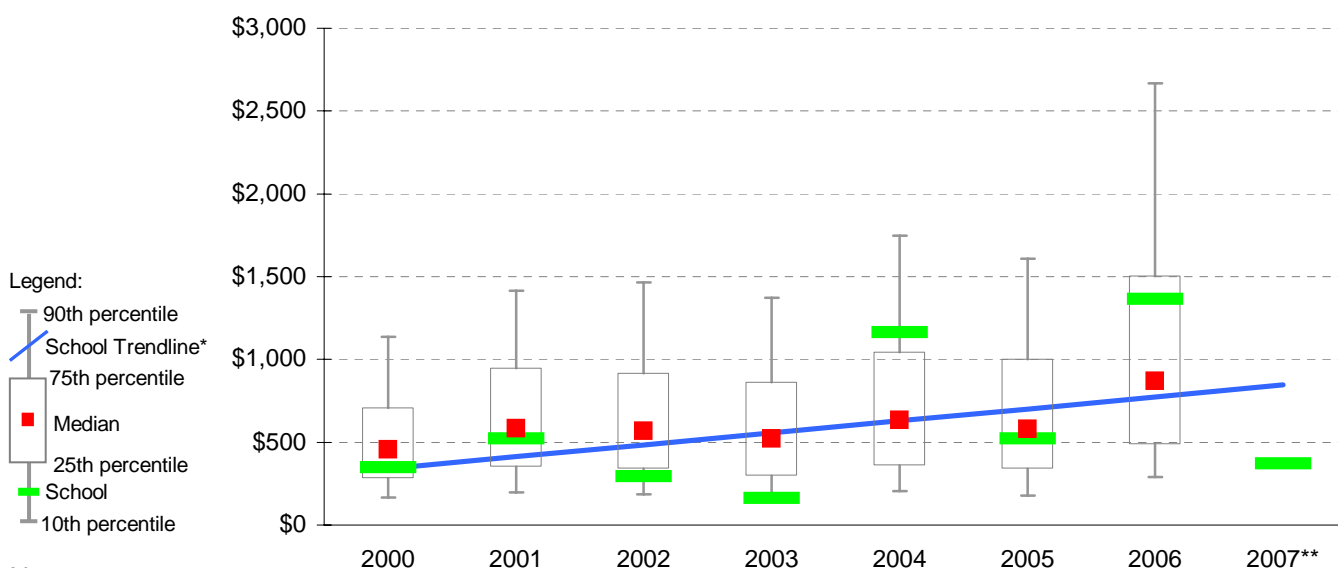
### Account Balances



## Account Balances (Official plus Investment Accounts) per student<sup>†</sup>

2000	\$348	2004	\$1,162
2001	\$522	2005	\$522
2002	\$295	2006	\$1,363
2003	\$162	2007	\$371

### School account balances per student enrolled in August census plotted on state Primary benchmarks<sup>^</sup>



#### Notes:

\* The school trendline is being trialled. It is only plotted when there is data for each calendar year.

\*\* 2007 benchmarks will be calculated in August, when data from all schools has been submitted.

† The account balance per student has been calculated to enable some comparison to be made between schools.

^ Benchmarks for primary, secondary, pri/sec, SDS, special and language schools.